

Surface Mount Type

Series: **FK** Type: **V**

FK High temperature Lead-Free reflow(suffix:A*)



■ Features

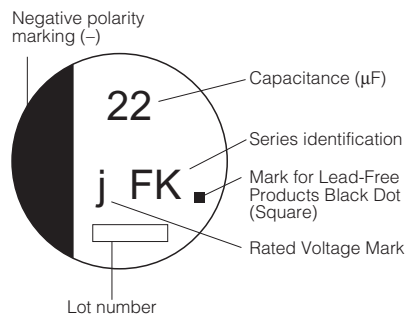
- Endurance: 2000 h at 105 °C
- Low impedance (40 % to 60 % less than FC series)
Miniaturized (30 % to 50 % less than FC series)
- Vibration-proof product is available upon request. ($\phi 8 \leq$)
- RoHS directive compliant

■ Specifications

Category Temp. Range	-55 °C to +105 °C						
Rated W.V.Range	6.3 V.DC to 35 V.DC						
Nominal Cap.Range	4.7 μ F to 1500 μ F						
Capacitance Tolerance	± 20 % (120 Hz/+20 °C)						
DC Leakage Current	$I \leq 0.01 CV$ or 3 (μ A) After 2 minutes (Whichever is greater)						
tan δ	Please see the attached High temperature lead-free reflow products list.						
Characteristics at Low Temperature	W.V. (V)	6.3	10	16	25	35	(Impedance ratio at 120 Hz)
	Z(-25 °C)/Z(+20 °C)	2	2	2	2	2	
	Z(-40 °C)/Z(+20 °C)	3	3	3	3	3	
	Z(-55 °C)/Z(+20 °C)	4	4	4	3	3	
Endurance	After applying rated working voltage for 2000 hours at +105 °C ± 2 °C and then being stabilized at +20 °C, Capacitors shall meet the following limits.						
	Capacitance change	± 30 % of initial measured value					
	tan δ	≤ 200 % of initial specified value					
	DC leakage current	\leq initial specified value					
Shelf Life	After storage for 1000 hours at +105 °C ± 2 °C with no voltage applied and then being stabilized at +20 °C, capacitors shall meet the limits specified in Endurance. (With voltage treatment)						
	After reflow soldering and then being stabilized at +20 °C, capacitor shall meet the following limits.						
Resistance to Soldering Heat	After reflow soldering and then being stabilized at +20 °C, capacitor shall meet the following limits.						
	Capacitance change	± 10 % of initial measured value					
	tan δ	\leq initial specified value					
	DC leakage current	\leq initial specified value					

■ Marking

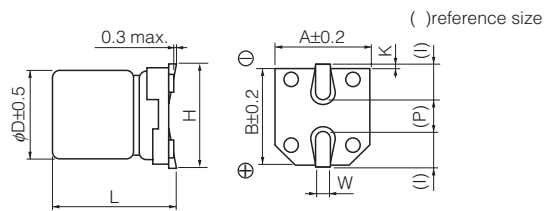
Example: 6.3 V 22 μ F
Marking color : BLACK



Rated Voltage Mark

j	6.3 V
A	10 V
C	16 V
E	25 V
V	35 V

■ Dimensions in mm (not to scale)



Size code	D	L	A, B	H	I	W	P	K
B	4.0	5.8 ± 0.3	4.3	5.5 max.	1.8	0.65 ± 0.1	1.0	0.35 $^{+0.15}_{-0.20}$
C	5.0	5.8 ± 0.3	5.3	6.5 max.	2.2	0.65 ± 0.1	1.5	0.35 $^{+0.15}_{-0.20}$
D	6.3	5.8 ± 0.3	6.6	7.8 max.	2.6	0.65 ± 0.1	1.8	0.35 $^{+0.15}_{-0.20}$
D8	6.3	7.7 ± 0.3	6.6	7.8 max.	2.6	0.65 ± 0.1	1.8	0.35 $^{+0.15}_{-0.20}$
E	8.0	6.2 ± 0.3	8.3	9.5 max.	3.4	0.65 ± 0.1	2.2	0.35 $^{+0.15}_{-0.20}$
F	8.0	10.2 ± 0.3	8.3	10.0 max.	3.4	0.90 ± 0.2	3.1	0.70 ± 0.20
G	10.0	10.2 ± 0.3	10.3	12.0 max.	3.5	0.90 ± 0.2	4.6	0.70 ± 0.20

Design and specifications are each subject to change without notice. Ask factory for the current technical specifications before purchase and/or use. Should a safety concern arise regarding this product, please be sure to contact us immediately.

00 Sep. 2010

High temperature Lead-Free reflow

Endurance : 105 °C 2000 h

W.V. (V)	Cap. (±20 %) (μF)	Case size			Specification			Part No. (RoHS:compliant)	Reflow	Min. Packaging Q'ty
		Dia. (mm)	Length (mm)	*Size Code	Ripple Current (100 kHz) (+105 °C) (mA r.m.s.)	Impedance (100 kHz) (+20 °C)	tan δ (120 Hz) (+20 °C)			Taping (pcs)
6.3	22	4	5.8	B	90	1.35	0.26	EEEFK0J220AR	(5)	2000
	47	4	5.8	(B)	90	1.35	0.26	EEEFKJ470UAR	(5)	2000
		5	5.8	C	160	0.70	0.26	EEEFK0J470AR	(5)	1000
	100	5	5.8	(C)	160	0.70	0.26	EEEFKJ101UAR	(5)	1000
		6.3	5.8	D	240	0.36	0.26	EEEFK0J101AP	(5)	1000
	220	6.3	5.8	D	240	0.36	0.26	EEEFK0J221AP	(5)	1000
		6.3	7.7	D8	280	0.34	0.26	EEEFKJ331XAP	(5)	900
	330	8	6.2	E	300	0.26	0.26	EEEFK0J331AP	(6)	1000
		8	10.2	F	600	0.16	0.26	EEEFK0J471AP	(6)	500
	1000	8	10.2	F	600	0.16	0.26	EEEFK0J102AP	(6)	500
1500	10	10.2	G	850	0.08	0.26	EEEFK0J152AP	(6)	500	
10	22	4	5.8	B	90	1.35	0.19	EEEFK1A220AR	(5)	2000
	33	4	5.8	(B)	90	1.35	0.19	EEEFKA330UAR	(5)	2000
		5	5.8	C	160	0.70	0.19	EEEFK1A330AR	(5)	1000
	150	6.3	5.8	D	240	0.36	0.19	EEEFK1A151AP	(5)	1000
		6.3	7.7	D8	280	0.34	0.19	EEEFKA221XAP	(5)	900
	220	8	6.2	E	300	0.26	0.19	EEEFK1A221AP	(6)	1000
		8	10.2	F	600	0.16	0.19	EEEFK1A331AP	(6)	500
	470	8	10.2	F	600	0.16	0.19	EEEFK1A471AP	(6)	500
	680	8	10.2	F	600	0.16	0.19	EEEFK1A681AP	(6)	500
	1000	10	10.2	G	850	0.08	0.19	EEEFK1A102AP	(6)	500
16	10	4	5.8	B	90	1.35	0.16	EEEFK1C100AR	(5)	2000
	22	4	5.8	(B)	90	1.35	0.16	EEEFKC220UAR	(5)	2000
		5	5.8	C	160	0.70	0.16	EEEFK1C220AR	(5)	1000
	47	5	5.8	(C)	160	0.70	0.16	EEEFKC470UAR	(5)	1000
		6.3	5.8	D	240	0.36	0.16	EEEFK1C470AP	(5)	1000
	68	6.3	5.8	D	240	0.36	0.16	EEEFK1C680AP	(5)	1000
	100	6.3	5.8	D	240	0.36	0.16	EEEFK1C101AP	(5)	1000
	150	6.3	7.7	D8	280	0.34	0.16	EEEFKC151XAP	(5)	900
	220	6.3	7.7	D8	280	0.34	0.16	EEEFKC221XAP	(5)	900
		8	6.2	E	300	0.26	0.16	EEEFK1C221AP	(6)	1000
330	8	10.2	F	600	0.16	0.16	EEEFK1C331AP	(6)	500	
470	8	10.2	F	600	0.16	0.16	EEEFK1C471AP	(6)	500	
680	10	10.2	G	850	0.08	0.16	EEEFK1C681AP	(6)	500	
25	10	4	5.8	B	90	1.35	0.14	EEEFK1E100AR	(5)	2000
	22	5	5.8	C	160	0.70	0.14	EEEFK1E220AR	(5)	1000
		5	5.8	(C)	160	0.70	0.14	EEEFKE330UAR	(5)	1000
	33	6.3	5.8	D	240	0.36	0.14	EEEFK1E330AP	(5)	1000
		6.3	5.8	D	240	0.36	0.14	EEEFK1E470AP	(5)	1000
	68	6.3	5.8	D	240	0.36	0.14	EEEFK1E680AP	(5)	1000
	100	6.3	7.7	D8	280	0.34	0.14	EEEFKE101XAP	(5)	900
	150	8	6.2	E	300	0.26	0.14	EEEFK1E101AP	(6)	1000
		8	10.2	F	600	0.16	0.14	EEEFK1E151AP	(6)	500
	220	8	10.2	F	600	0.16	0.14	EEEFK1E221AP	(6)	500
330	8	10.2	F	600	0.16	0.14	EEEFK1E331AP	(6)	500	
470	10	10.2	G	850	0.08	0.14	EEEFK1E471AP	(6)	500	
35	4.7	4	5.8	B	90	1.35	0.12	EEEFK1V4R7AR	(5)	2000
	10	4	5.8	(B)	90	1.35	0.12	EEEFKV100UAR	(5)	2000
		5	5.8	C	160	0.70	0.12	EEEFK1V100AR	(5)	1000
	22	5	5.8	C	160	0.70	0.12	EEEFK1V220AR	(5)	1000
	33	6.3	5.8	D	240	0.36	0.12	EEEFK1V330AP	(5)	1000
	47	6.3	5.8	D	240	0.36	0.12	EEEFK1V470AP	(5)	1000
	68	6.3	7.7	D8	280	0.34	0.12	EEEFKV680XAP	(5)	900
	100	6.3	7.7	D8	280	0.34	0.12	EEEFKV101XAP	(5)	900
		8	10.2	F	600	0.16	0.12	EEEFK1V101AP	(6)	500
	150	8	10.2	F	600	0.16	0.12	EEEFK1V151AP	(6)	500
220	8	10.2	F	600	0.16	0.12	EEEFK1V221AP	(6)	500	
330	10	10.2	G	850	0.08	0.12	EEEFK1V331AP	(6)	500	

*Size code():Miniaturization product

If Part number exceeds 12 digits, voltage code is abbreviated as follows; 0J→J, 1A→A, 1C→C, 1E→E, 1V→V

The taping dimensions are explained on EE188 of our Catalog. Please use it as a reference guide.

Reflow Profile(Fig-1 to Fig-11) listed on EE186 of our Catalog.

Design and specifications are each subject to change without notice. Ask factory for the current technical specifications before purchase and/or use.
Should a safety concern arise regarding this product, please be sure to contact us immediately.