



**RP1032**

- **Designed for 674 MHz CATV Local Oscillators**
- **Nominal Insertion Phase Shift of 180° at Resonance**
- **Quartz Stability**
- **Rugged, Hermetic, Low-Profile TO39 Case**
- **Complies with Directive 2002/95/EC (RoHS)**



**674.03 MHz  
SAW  
Resonator**

The RP1032 is a two-port, 180° surface-acoustic-wave (SAW) resonator in a low-profile TO39 case. It provides reliable, fundamental-mode, quartz frequency stabilization of fixed-frequency oscillators operating at or near 674 MHz. Typical applications include the second LO in CATV set-top converters with channel 3 output.



**Absolute Maximum Ratings**

Rating	Value	Units
CW RF Power Dissipation (See: Typical Test Circuit.)	+5	dBm
DC Voltage Between Any Two Pins (Observe ESD Precautions)	±30	VDC
Case Temperature	-40 to +85	°C

**Electrical Characteristics**

Characteristic	Sym	Notes	Minimum	Typical	Maximum	Units			
Frequency (+25°C) Nominal Frequency	$f_C$	2, 3, 4, 5,	673.930		674.130	MHz			
	Tolerance from 674.030 MHz						$\Delta f_C$	±100	kHz
Insertion Loss	IL	2, 5, 6		8.9	12.5	dB			
Quality Factor	Unloaded Q	5, 6, 7		8,400					
	50 Ω Loaded Q						$Q_L$	5,400	
Temperature Stability	Turnover Temperature	6, 7, 8	58	73	88	°C			
	Turnover Frequency						$f_O$	$f_C+58$	kHz
	Frequency Temp. Coefficient						FTC	0.037	ppm/°C <sup>2</sup>
Frequency Aging	Absolute Value during First Year	f <sub>A</sub>	1, 6	10		ppm/yr			
DC Insulation Resistance between Any Two Pins		5	1.0			MΩ			
RF Equivalent RLC	Motional Resistance	5, 6, 7, 9		180	322	Ω			
	Motional Inductance						$L_M$	358.641	μH
	Motional Capacitance						$C_M$	0.155461	fF
	Shunt Capacitance						$C_O$	1.3	1.6
Lid Symbolization (in addition to Lot and/or Date Codes)			RFM 1032-3						



**CAUTION: Electrostatic Sensitive Device. Observe precautions for handling.**

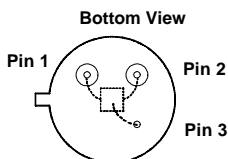
**Notes:**

1. Frequency aging is the change in  $f_C$  with time and is specified at +65°C or less. Aging may exceed the specification for prolonged temperatures above +65°C. Typically, aging is greatest the first year after manufacture, decreasing significantly in subsequent years.
2. The frequency  $f_C$  is the frequency of minimum IL with the resonator in the specified test fixture in a 50 Ω test system with VSWR ≤ 1.2:1. Typically,  $f_{OS-CILLATOR}$  or  $f_{TRANSMITTER}$  is less than the resonator  $f_C$ .
3. One or more of the following United States patents apply: 4,454,488; 4,616,197.
4. Typically, equipment utilizing this device requires emissions testing and government approval, which is the responsibility of the equipment manufacturer.
5. Unless noted otherwise, case temperature  $T_C = +25°C ± 5°C$
6. The design, manufacturing process, and specifications of this device are subject to change without notice.
7. Derived mathematically from one or more of the following directly measured parameters:  $f_C$ , IL, 3 dB bandwidth,  $f_C$  versus  $T_C$ , and  $C_O$ .
8. Turnover temperature,  $T_O$ , is the temperature of maximum (or turnover) frequency,  $f_O$ . The nominal frequency at any case temperature,  $T_C$ , may be calculated from:  $f = f_O [1 - FTC (T_O - T_C)^2]$ . Typically, *oscillator*  $T_O$  is 20° less than the specified *resonator*  $T_O$ .
9. This equivalent RLC model approximates resonator performance near the resonant frequency and is provided for reference only. The capacitance  $C_O$  is the measured static (nonmotional) capacitance between either pin 1 and ground or pin 2 and ground. The measurement includes case parasitic capacitance.

## Electrical Connections

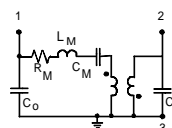
This two-port, three-terminal SAW resonator is bidirectional. However, impedances and circuit board parasitics may not be symmetrical, requiring slightly different oscillator component-matching values.

Pin	Connection
1	Input or Output
2	Output or Input
3	Case Ground



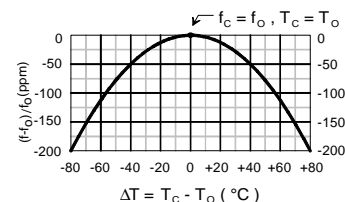
## Equivalent LC Model

The following equivalent LC model is valid near resonance:

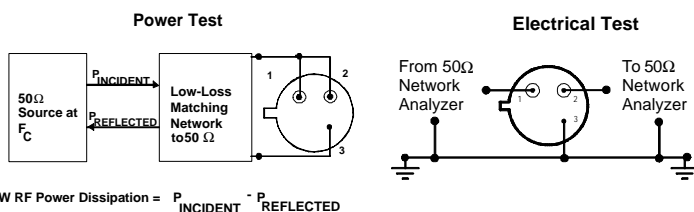


## Temperature Characteristics

The curve shown on the right accounts for resonator contribution only and does not include LC component temperature contributions.



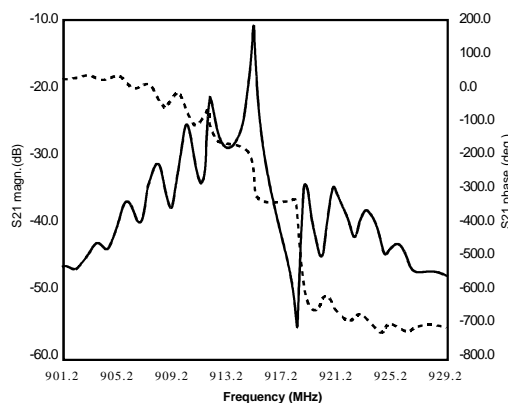
## Typical Test Circuit



$$CW \text{ RF Power Dissipation} = P_{INCIDENT} - P_{REFLECTED}$$

## Typical Frequency Response

The plot shown below is a typical frequency response for the RP series of two-port resonators. The plot is for RP1094.

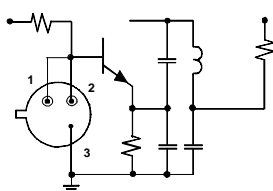
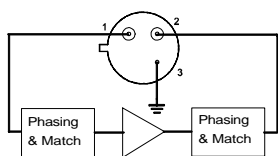


## Typical Application Circuits

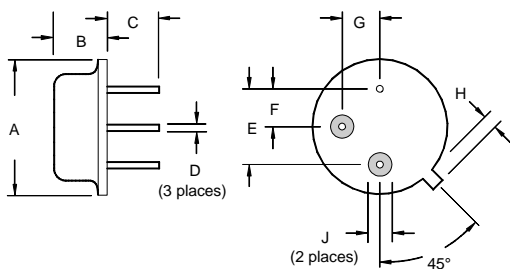
This SAW resonator can be used in oscillator or transmitter designs that require 180° phase shift at resonance in a two-port configuration. One-port resonators can be simulated, as shown, by connecting pins 1 and 2 together. However, for most low-cost consumer products, this is only recommended for retrofit applications and not for new designs.

Conventional Two-Port Design:

Simulated One-Port Design:



## Case Design



Dimensions	Millimeters		Inches	
	Min	Max	Min	Max
A		9.40		0.370
B		3.18		0.125
C	2.50	3.50	0.098	0.138
D	0.46 Nominal		0.018 Nominal	
E	5.08 Nominal		0.200 Nominal	
F	2.54 Nominal		0.100 Nominal	
G	2.54 Nominal		0.100 Nominal	
H		1.02		0.040
J	1.40		0.055	