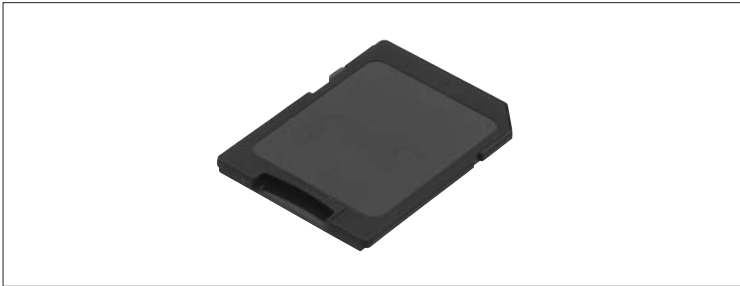


SD Card Adapter (for microSD™ Card)

SCHC Series



High contact reliability and locking mechanism work effectively to prevent unintentional ejection of cards.



For SD Memory Card

For microSD™ Card

For SIM Card 8pins

For W-SIM

For Memory Stick Micro™

For Memory Stick™

Combine Type

For Compact Flash™

For PC cards supporting CardBus

For Express Card™

For CMOS Camera Module

Features

- General SD card hosts can be used by inserting miniSD™ card into the adaptor.
- Unique half-lock structure stops media from flying out during ejection.

Applications

- For digital still cameras, digital camcorders, mobile phones, PCs and personal digital assistants

Typical Specifications

Items		Specifications
Structure	Applicable media	microSD™ Card
	Mounting type	_____
	Mounting style	_____
	Media ejection structure	Manual insertion/removal
Performance	Operating temperature range	-25°C to +85°C
	Voltage proof	500V AC 1minute
	Insulation resistance (Initial)	1,000MΩ min.
	Contact resistance (Initial)	100mΩ max.
	Insertion and removal cycle	10,000cycles

Product Line

Media ejection structure	Packing system	Product No.
Manual insertion/removal	Tray	SCHC1A0200

