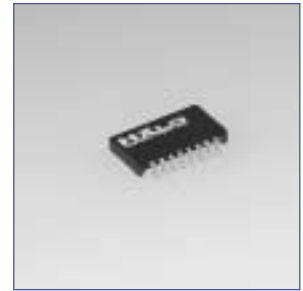
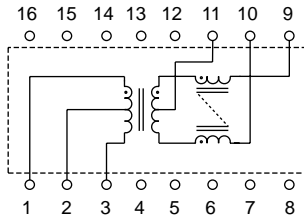


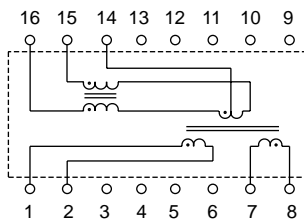
HALO Electronics has developed this standard series of PCMCIA 10/100 Isolation Modules to specifically address the Isolation, Insertion Loss and return Loss requirements of IEEE 802.3u for Fast Ethernet. Isolation Modules are available for most LAN IC manufacturer's products. To select the correct Isolation Module please refer to the HALO Electronics 10/100 Selector Guide.



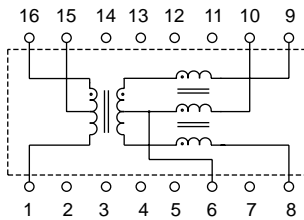
**Schematic A**



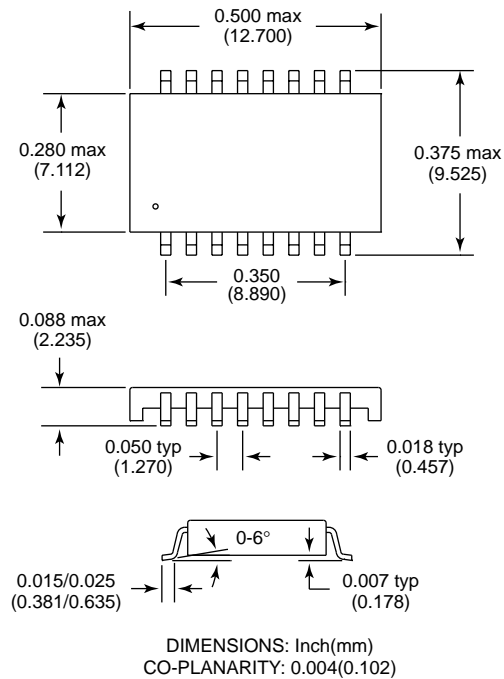
**Schematic B**



**Schematic C**



**PCMCIA Package**



**Electrical Specifications @ 25°C**

Isolation Voltage: 1,500 Vrms  
 OCL (100KHz, 0.1Vrms): 350  $\mu$ H Min.  
 Leakage Inductance (1MHz): 0.4 $\mu$ H Max.

Cw/w: 20pF Typ.  
 DCR: 0.9  $\Omega$  Max.  
 Rise Time: 2.5 nS Typ.  
 CMR (0.1-100MHz): -35 dB Typ.

Part Number	Turns Ratio	Application	Schematic
TG110-S041P1	2CT:1CT	Transmit Circuit	A
TG110-S042P1	1:1:1CT	Receive Circuit	B
TG110-S050P1	1CT:1CT	Transmit / Receive Circuits	C
TG110-S055P1	$\sqrt{2}$ CT:1CT	Transmit Circuit	C
TG110-S057P1	1.25CT:1CT	Transmit Circuit	C

*Note: Please contact the factory for detailed data sheets.*