

STF

Three Phase + Neutral Filters for Solar Technology Applications

RFI Power Line Filters

General Specifications

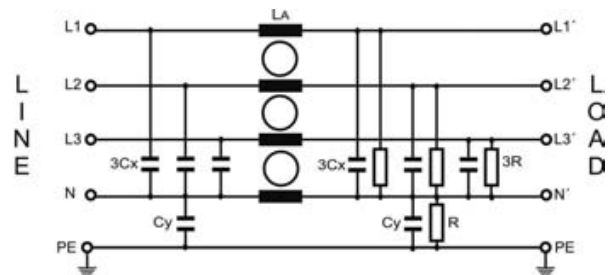
- Maximum operating voltage: 520 Vac
- Operating frequency: DC - 60Hz
- Hipot test voltage:
L/N→PE: 3000 Vdc 2s
L→N: 2250 Vdc 2s
- Application class: HMF Acc. TO DIN 40040
(-25°C/+100°C/95% RH, 30d)
- Flammability class: UL 94 V2



Three Phase + Neutral Filters

Single stage
Solar technology applications
Compact model for saving space
Low leakage current

Electrical schematic



Product List

Type	Rated Current (A) @ 50 °c	Leakage Current (mA)	Power Losses (W)	Connection	Weight (Kg)	Housing
STF-008HV	8	<1	2,7	Terminal block 4 mm ² / AWG 10	0,8	50
STF-016HV	16	<1	6	Terminal block 4 mm ² / AWG 10	0,8	50
STF-025HV	25	<1	11,6	Terminal block 10 mm ² / AWG 6	1,3	51
STF-036HV	36	<1	14,8	Terminal block 10 mm ² / AWG 6	1,6	51
STF-064HV	64	<1	18,4	Terminal block 25 mm ² / AWG 2	2,7	52
STF-080HV	80	<1	18,9	Terminal block 50 mm ² / AWG 0	4,1	53
STF-120HV	120	<1	28,5	Terminal block 50 mm ² / AWG 0	5,9	54
STF-160HV	160	<1	30,7	Terminal block 95 mm ² / AWG 000	7,9	55
STF-200HV	200	<1	46,8	Terminal block 95 mm ² / AWG 000	8,5	55

STF

Three Phase + Neutral Filters for Solar Technology Applications

Insertion Loss ——— ASYM
 - - - - SYM

