

PLEASE CHECK WWW.MOLEX.COM FOR LATEST PART INFORMATION

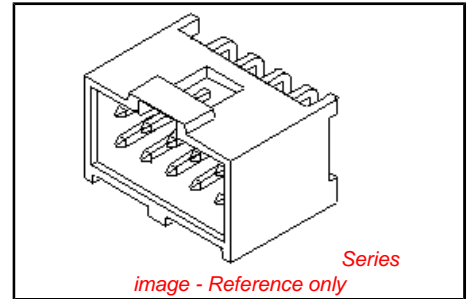
Part Number: [0918149216](#)
Status: **Active**
Overview: [cgrid_iii](#)
Description: 2.54mm (.100") Pitch C-Grid III™ Dual Row Right Angle Shrouded Header, 16 Circuits, Tin (Sn) over Nickel (Ni)

Documents:

[Drawing \(PDF\)](#) [RoHS Certificate of Compliance \(PDF\)](#)

General

Product Family	PCB Headers
Series	91814
Application	Wire-to-Board
Overview	cgrid_iii
Product Name	C-Grid III™
Physical	
Breakaway	No
Circuits (Loaded)	16
Circuits (maximum)	16
Color - Resin	Black
Durability (mating cycles max)	100
First Mate / Last Break	No
Glow-Wire Compliant	No
Guide to Mating Part	No
Keying to Mating Part	None
Lock to Mating Part	None
Material - Metal	Brass
Material - Plating Mating	Gold
Material - Plating Termination	Tin
Material - Resin	High Temperature Thermoplastic
Number of Rows	2
Orientation	Right Angle
PC Tail Length (in)	0.083 In
PC Tail Length (mm)	2.10 mm
PCB Locator	No
PCB Retention	None
PCB Thickness Recommended (in)	0.063 In
PCB Thickness Recommended (mm)	1.60 mm
Packaging Type	Tray
Pitch - Mating Interface (in)	0.100 In
Pitch - Mating Interface (mm)	2.54 mm
Pitch - Term. Interface (in)	0.100 In
Pitch - Term. Interface (mm)	2.54 mm
Plating min: Mating (µin)	15.2
Plating min: Mating (µm)	0.38
Plating min: Termination (µin)	120
Plating min: Termination (µm)	3
Polarized to Mating Part	Yes
Polarized to PCB	No
Shrouded	Closed Ends
Stackable	No
Surface Mount Compatible (SMC)	Yes
Temperature Range - Operating	-55°C to +125°C
Termination Interface: Style	Through Hole



EU RoHS

ELV and RoHS Compliant

REACH SVHC

Not Reviewed

Halogen-Free

Status

Not Reviewed

Need more information on product environmental compliance?

Email productcompliance@molex.com
 For a multiple part number RoHS Certificate of Compliance, [click here](#)

Please visit the [Contact Us](#) section for any non-product compliance questions.

China RoHS



Search Parts in this Series

[91814Series](#)

Mates With

[90142 C-Grid III™ Crimp Housing](#), [90119 C-Grid III™ Crimp Terminal](#)

Electrical

Current - Maximum per Contact
Voltage - Maximum

3A
350V AC/DC

Material Info**Reference - Drawing Numbers**

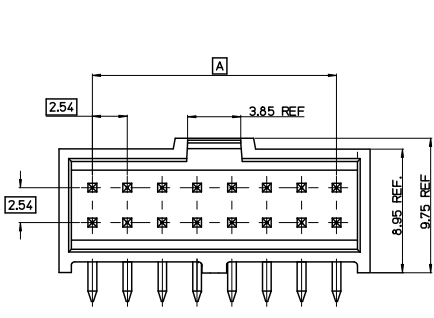
Packaging Specification
Sales Drawing

PK-91814-005
RSD-91814-001

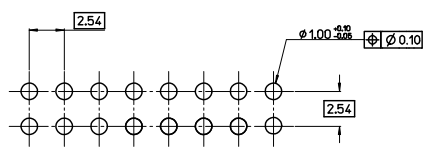
This document was generated on 05/26/2010

PLEASE CHECK WWW.MOLEX.COM FOR LATEST PART INFORMATION

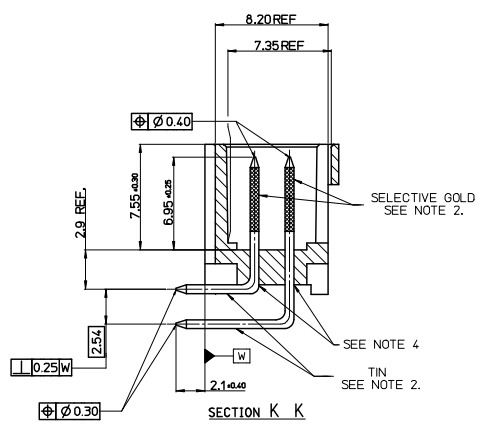
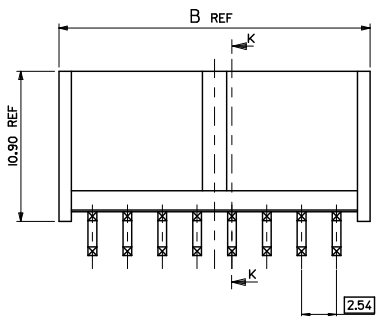
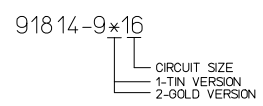
HSG CKT SIZE	PART NUMBER	DIM A	DIM B
16	91814-9116	17.78	22.66
	91814-9216		



VERSION FULLY LOADED



RECOMMENDEC P.C. BOARD HOLE PATTERN



NOTES:

- MATERIAL:
PIN: 0.647 REF SO. BRASS WIRE.
HOUSING: (PCT) 30% GLASS FILLED POLYESTER UL 94 V-0
COLOUR: BLACK
- PLATING:
TIN VERSION: 34µm TIN MIN. OVER NICKEL
GOLD VERSION: 0.38µm SELECTIVE GOLD
MIN. IN CONTACT AREA OVER NICKEL 34µm TIN MIN. IN SOLDER AREA OVER NICKEL.
- PIN RETENTION FORCE 20N MIN. IN BOTH DIRECTIONS.
- HOUSING FLASH PERMISSIBLE IN THIS AREA.
- HEADER IS PACKAGED IN TAPE & REEL. SEE RPK-91814-001.
- PRODUCT SPECIFICATION: PS-99020-0001
- RECOMMENDED POB THICKNESS 1.6mm

CORRECTED DIM DIM ADDED DIMS ELC NO. E2008-0143 DRAWN BY: J. DENNEHY 2008/04/10 CHKD: DWALLACE 2008/04/11 APPR: DWALLACE 2008/04/11 DESCRIPTION REV	QUALITY SYMBOLS	GENERAL TOLERANCES (UNLESS SPECIFIED)	DIMENSION STYLE	SCALE	DESIGN UNITS	THIRD ANGLE PROJECTION																		
	$\nabla=0$ $\nabla=0$	<table border="1"> <thead> <tr> <th></th> <th>mm</th> <th>INCH</th> </tr> </thead> <tbody> <tr> <td>4 PLACES</td> <td>± ---</td> <td>± ---</td> </tr> <tr> <td>3 PLACES</td> <td>± ---</td> <td>± ---</td> </tr> <tr> <td>2 PLACES</td> <td>± 0.15</td> <td>± ---</td> </tr> <tr> <td>1 PLACE</td> <td>± 0.25</td> <td>± ---</td> </tr> <tr> <td colspan="3">ANGULAR ± 5 °</td> </tr> </tbody> </table>		mm	INCH	4 PLACES	± ---	± ---	3 PLACES	± ---	± ---	2 PLACES	± 0.15	± ---	1 PLACE	± 0.25	± ---	ANGULAR ± 5 °			MM ONLY	5:1	METRIC	<input checked="" type="checkbox"/> THIRD ANGLE <input type="checkbox"/> PROJECTION
		mm	INCH																					
	4 PLACES	± ---	± ---																					
3 PLACES	± ---	± ---																						
2 PLACES	± 0.15	± ---																						
1 PLACE	± 0.25	± ---																						
ANGULAR ± 5 °																								
DRAFT WHERE APPLICABLE MUST REMAIN WITHIN DIMENSIONS	<table border="1"> <thead> <tr> <th>DRAWN BY</th> <th>DATE</th> <th>TITLE</th> </tr> </thead> <tbody> <tr> <td>J. DENNEHY</td> <td>2007/01/12</td> <td rowspan="3">C-GRID III DUAL ROW R/A PIN SHROUDED HEADER ROHS COMPATIBLE</td> </tr> <tr> <td>D. WASZKIEWIC</td> <td>2007/01/12</td> </tr> <tr> <td>J. DENNEHY</td> <td>2007/01/12</td> </tr> </tbody> </table>	DRAWN BY	DATE	TITLE	J. DENNEHY	2007/01/12	C-GRID III DUAL ROW R/A PIN SHROUDED HEADER ROHS COMPATIBLE	D. WASZKIEWIC	2007/01/12	J. DENNEHY	2007/01/12	<table border="1"> <tr> <td>MATERIAL NO.</td> <td>DOCUMENT NO.</td> <td>SHEET NO.</td> </tr> <tr> <td>91814-9116</td> <td>RSD-91814-001</td> <td>1 OF 1</td> </tr> </table>	MATERIAL NO.	DOCUMENT NO.	SHEET NO.	91814-9116	RSD-91814-001	1 OF 1						
DRAWN BY	DATE	TITLE																						
J. DENNEHY	2007/01/12	C-GRID III DUAL ROW R/A PIN SHROUDED HEADER ROHS COMPATIBLE																						
D. WASZKIEWIC	2007/01/12																							
J. DENNEHY	2007/01/12																							
MATERIAL NO.	DOCUMENT NO.	SHEET NO.																						
91814-9116	RSD-91814-001	1 OF 1																						
THIS DRAWING CONTAINS INFORMATION THAT IS PROPRIETARY TO MOLEX INCORPORATED AND SHOULD NOT BE USED WITHOUT WRITTEN PERMISSION			MOLEX INCORPORATED																					