



### Features

- Low insertion loss, High isolation
- Perfect phase/amplitude balance
- Low VSWR
- 50 Ω impedance
- Removable SMA connector
- Operating temperature range: -55°C ~ +85°C

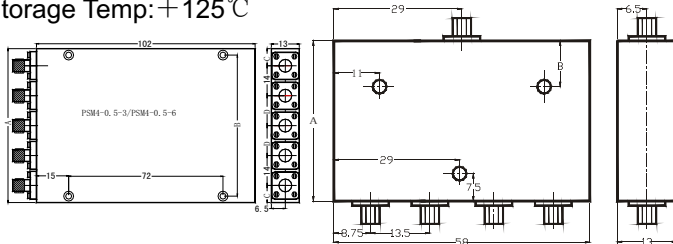
### Specifications (measured in a 50 Ω system TA=-55°C ~ +85°C)

| Parameter number | Frequency Range GHz | Insertion loss (Max) | Isolation (Min) | Phase unbalance (Max) | Amplitude unbalance (Max) | VSWR (Max) | Package (mm) |    |   |    |
|------------------|---------------------|----------------------|-----------------|-----------------------|---------------------------|------------|--------------|----|---|----|
|                  |                     |                      |                 |                       |                           |            | A            | B  | C | D  |
| PSM4-0.5-3       | 0.5~3               | 1.0                  | 19△             | 4°△                   | 0.5                       | 1.5:1      | 78           | 76 | 9 | 16 |
| PSM4-0.5-6       | 0.5~6               | 2.0                  | 18△             | 6°△                   | 0.8                       | 1.6:1      | 72           | 66 | 8 | 14 |
| PSM 4-1-2        | 1~2                 | 0.8                  | 21△             | 4°△                   | 0.4                       | 1.4:1      | 56           | 12 | — |    |
| PSM 4-2-4        | 2~4                 | 0.8                  | 20△             | 4°△                   | 0.4                       | 1.4:1      | 34           |    |   |    |
| PSM4-2-8         | 2~8                 | 1.2                  | 18△             | 6°△                   | 0.5                       | 1.5:1      | 56           |    |   |    |
| PSM 4-3-6        | 3~6                 | 0.8                  | 20△             | 4°△                   | 0.5                       | 1.5:1      | 34           |    |   |    |
| PSM4-4-8         | 4~8                 | 1.0                  | 20△             | 6°△                   | 0.5                       | 1.5:1      | 34           |    |   |    |
| PSM4-5-10        | 5~10                | 1.0                  | 20△             | 6°△                   | 0.5                       | 1.5:1      | 34           |    |   |    |
| PSM4-7-12.5      | 7~12.5              | 1.0                  | 18△             | 8°△                   | 0.5                       | 1.5:1      | 34           |    |   |    |

“△” Measured at Tc=24±1°C

### Absolute Maximum Ratings

Input Power: 5W  
Storage Temp: +125°C



### Application Notes

1. Input/output pins should be connected to 50 Ω microstrip.
2. Removable SMA connector is available
3. When the input power is maximum the output load VSWR < 1.2 is required.

### Typical Performance

