

SKa 1



Axial Lead Diode

Avalanche Diode

SKa 1

Features

- Avalanche type reverse characteristic
- Transient voltage proof within specified limits
- Taped for automatic insertion
- Available with formed leads on request
- Plastic material used carries Underwriter Laboratories flammability classification 94V-0

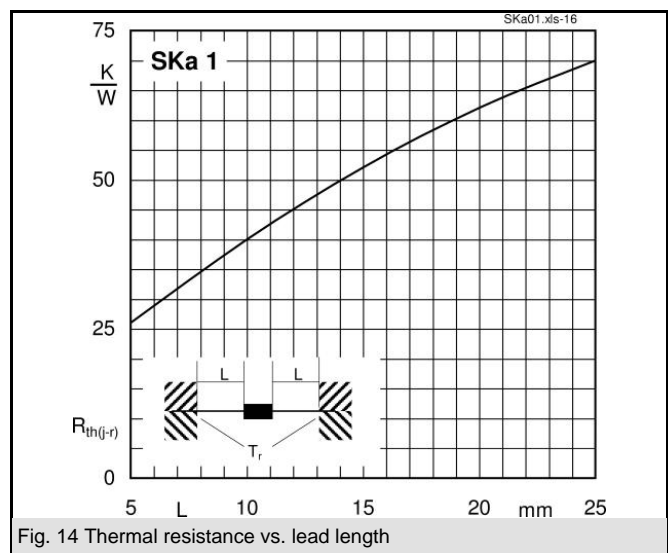
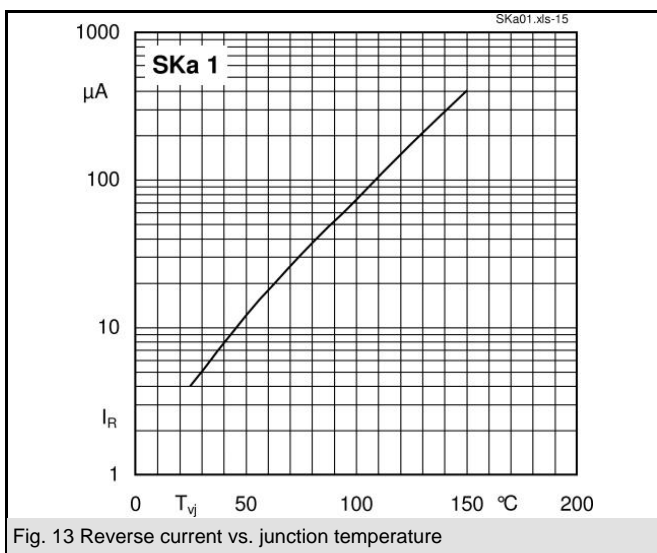
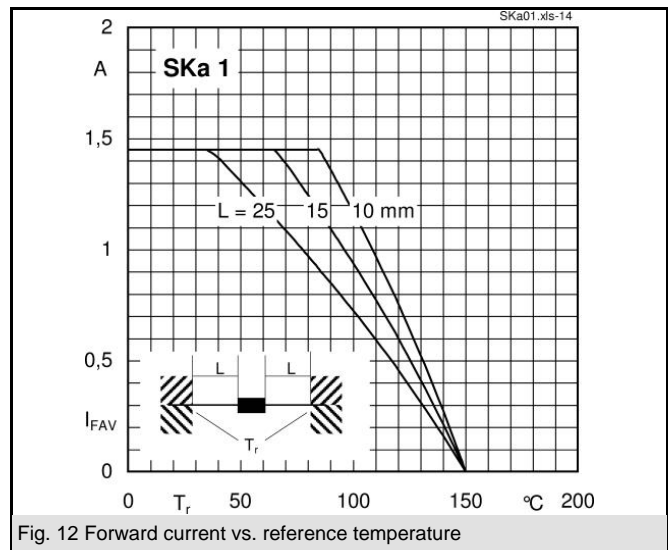
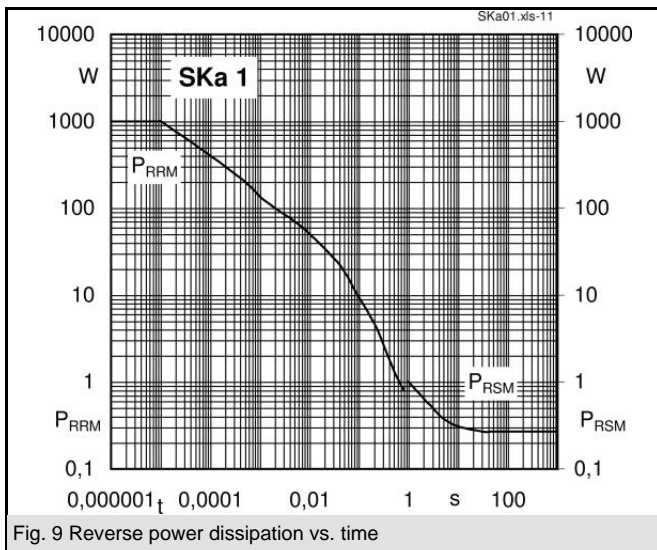
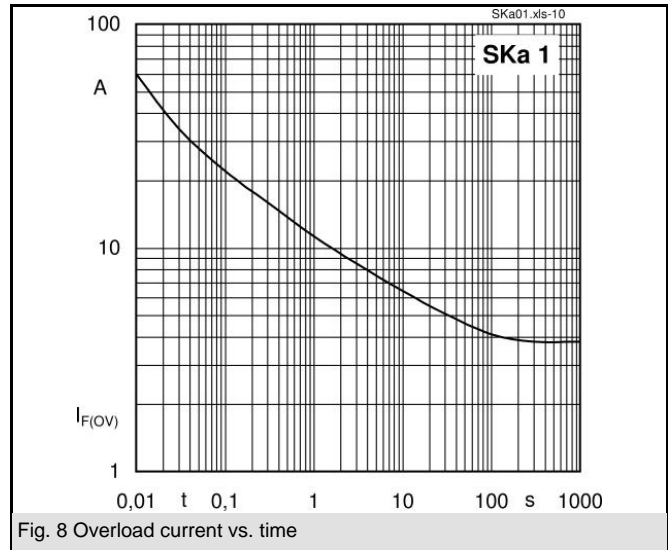
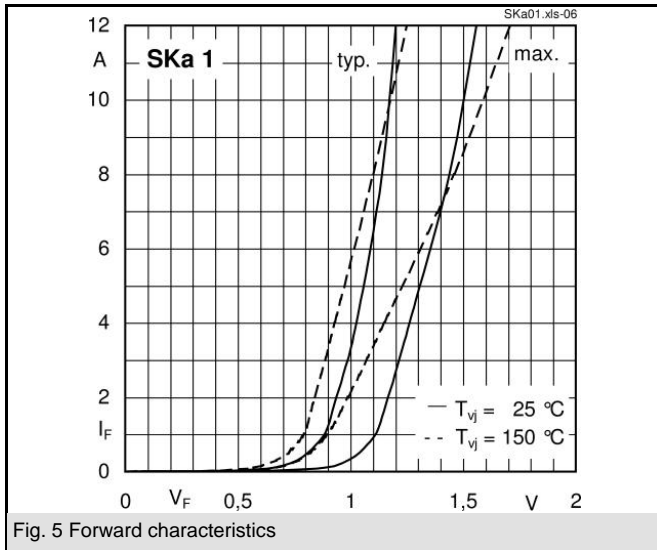
Typical Applications

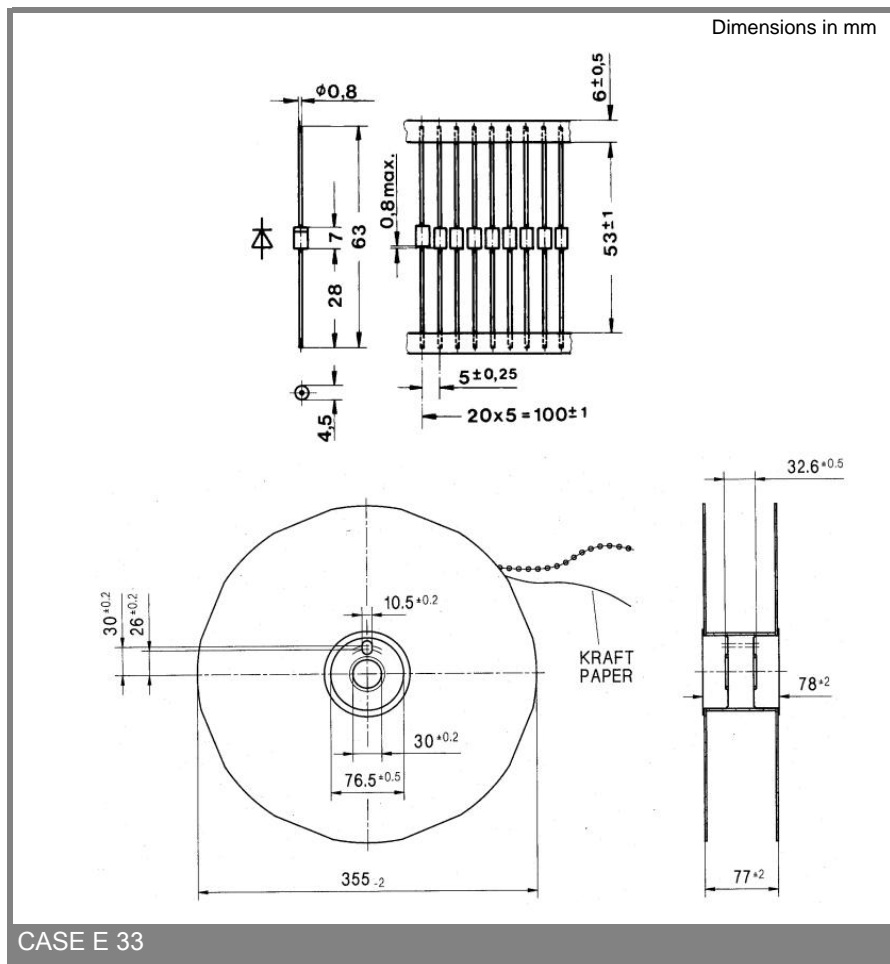
- DC supply for magnetes or solenoids (brakes, valves etc.)
- Series connections for high voltage applications (dust precipitators)



| | | | |
|---------------|--|---------------|-----------|
| $V_{(BR)min}$ | $I_{FRMS} = 3 \text{ A}$ (maximum value for continuous operation) | C_{max} | R_{min} |
| V | $I_{FAV} = 1 \text{ A}$ (sin. 180; $T_a = 60 \text{ }^\circ\text{C}$) | μF | Ω |
| 1300 | SKa 1/13 | 400 | 6 |
| 1700 | SKa 1/17 | 200 | 10 |

| Symbol | Conditions | Values | Units |
|---------------|--|----------------|------------------|
| I_{FAV} | $T_r = 85 \text{ }^\circ\text{C}$; L = 10 mm; sin. 180 | 1,45 | A |
| I_{FAV} | $T_a = 45 \text{ }^\circ\text{C}$; PCB 50 x 50 mm | 1,15 | A |
| I_{FSM} | $T_{vj} = 25 \text{ }^\circ\text{C}$; 10 ms | 60 | A |
| | $T_{vj} = 150 \text{ }^\circ\text{C}$; 10 ms | 50 | A |
| i^2t | $T_{vj} = 25 \text{ }^\circ\text{C}$; 8,3 ... 10 ms | 18 | A ² s |
| | $T_{vj} = 150 \text{ }^\circ\text{C}$; 8,3 ... 10 ms | 12,5 | A ² s |
| V_F | $T_{vj} = 25 \text{ }^\circ\text{C}$; $I_F = 10 \text{ A}$ | max. 1,5 | V |
| $V_{(TO)}$ | $T_{vj} = 150 \text{ }^\circ\text{C}$ | max. 0,85 | V |
| r_T | $T_{vj} = 150 \text{ }^\circ\text{C}$ | max. 75 | m Ω |
| I_{RD} | $T_{vj} = 150 \text{ }^\circ\text{C}$; $V_{RD} = V_{(BR)min}$ | max. 400 | μA |
| P_{RSM} | $T_{vj} = 150 \text{ }^\circ\text{C}$; $t_p = 10 \mu\text{s}$ | 1 | kW |
| $R_{th(j-r)}$ | L = 10 mm | 40 | K/W |
| $R_{th(j-a)}$ | PCB 50 x 50 mm | 85 | K/W |
| T_{vj} | | - 40 ... + 150 | $^\circ\text{C}$ |
| T_{stg} | | - 40 ... + 150 | $^\circ\text{C}$ |
| T_{sold} | max. 10 s; L > 9 mm | 250 | $^\circ\text{C}$ |
| V_{isol} | | - | V~ |
| a | | 5 * 9,81 | m/s ² |
| m | approx. | 0,5 | g |
| Case | 3500 diodes per reel | E 33 | |





CASE E 33

This technical information specifies semiconductor devices but promises no characteristics. No warranty or guarantee expressed or implied is made regarding delivery, performance or suitability.