

# Surface Mount Frequency Mixer

Level 13 (LO Power +13 dBm) 800 to 1000 MHz

## ADE-10MH+ ADE-10MH



CASE STYLE: CD636  
PRICE: \$6.95 ea. QTY (10-49)

**+ RoHS compliant in accordance  
with EU Directive (2002/95/EC)**

The +Suffix identifies RoHS Compliance. See our web site  
for RoHS Compliance methodologies and qualifications.

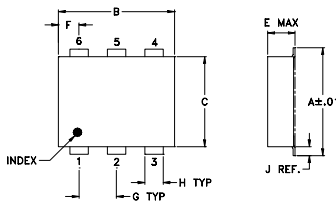
### Maximum Ratings

Operating Temperature	-40°C to 85°C
Storage Temperature	-55°C to 100°C
RF Power	200mW
IF Current	40mA

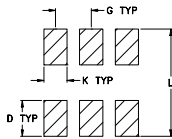
### Pin Connections

LO	6
RF	3
IF	2
GROUND	1,4,5

### Outline Drawing



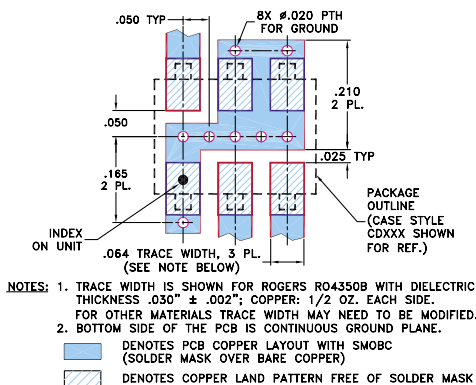
### PCB Land Pattern



### Outline Dimensions (inch)

A	B	C	D	E	F	G
.272	.310	.220	.100	.162	.055	.100
6.91	7.87	5.59	2.54	4.11	1.40	2.54
H	J	K	L		wt	
.030	.026	.065	.300		grams	
0.76	0.66	1.65	7.62		0.25	

### Demo Board MCL P/N: TB-03 Suggested PCB Layout (PL-052)



### Features

- low conversion loss, 7.0 dB typ.
- excellent L-R isolation, 34 dB typ.
- excellent L-I isolation, 29 dB typ.
- high IP3, 26 dBm typ.
- aqueous washable
- protected by U.S. Patent 6,133,525

### Applications

- GSM

### Electrical Specifications

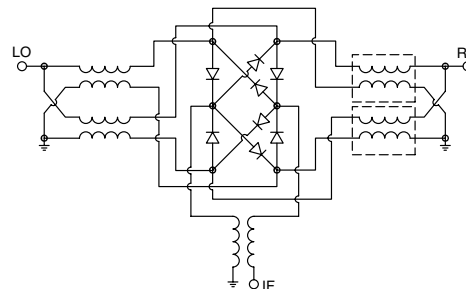
FREQUENCY (MHz)	CONVERSION LOSS (dB)	LO-RF ISOLATION (dB)		LO-IF ISOLATION (dB)		IP3 at center band (dBm)
		Typ.	Min.	Typ.	Min.	
800-1000	7.0	34	20	29	20	26

1 dB COMP.: +9 dBm typ.

### Typical Performance Data

Frequency (MHz)	Conversion Loss (dB)	Isolation L-R (dB)	Isolation L-I (dB)	VSWR RF Port (:1)	VSWR LO Port (:1)	
						RF
800.00	830.00	6.96	37.49	27.09	1.66	1.29
810.00	840.00	6.94	37.54	27.08	1.68	1.30
820.00	850.00	6.91	37.55	27.04	1.70	1.31
830.00	860.00	6.91	37.57	27.06	1.71	1.31
840.00	870.00	6.85	37.58	27.07	1.71	1.31
850.00	880.00	6.87	37.54	27.04	1.72	1.31
860.00	890.00	6.90	37.55	27.10	1.71	1.30
880.00	910.00	6.77	37.54	27.17	1.74	1.29
890.00	920.00	6.83	37.52	27.26	1.75	1.29
900.00	930.00	6.95	37.49	27.34	1.76	1.29
910.00	940.00	6.99	37.42	27.37	1.77	1.30
920.00	950.00	6.88	37.30	27.41	1.78	1.30
930.00	960.00	6.78	37.22	27.44	1.77	1.30
940.00	970.00	6.79	37.06	27.45	1.77	1.29
950.00	980.00	6.84	36.95	27.47	1.77	1.29
960.00	990.00	6.87	36.90	27.53	1.79	1.28
970.00	1000.00	6.90	36.76	27.54	1.81	1.28
980.00	1010.00	6.90	36.67	27.61	1.82	1.28
990.00	1020.00	6.87	36.58	27.65	1.82	1.28
1000.00	1030.00	6.80	36.50	27.72	1.82	1.29

### Electrical Schematic



**Mini-Circuits®**  
ISO 9001 ISO 14001 CERTIFIED

ALL NEW  
minicircuits.com

P.O. Box 350166, Brooklyn, New York 11235-0003 (718) 934-4500 Fax (718) 332-4661 For detailed performance specs & shopping online see Mini-Circuits web site



The Design Engineers Search Engine Provides ACTUAL Data Instantly From MINI-CIRCUITS At: [www.minicircuits.com](http://www.minicircuits.com)

RF/IF MICROWAVE COMPONENTS

REV. C  
M102713  
ADE-10MH  
ED-8276/2  
DJ/TD/CP/AM  
061227  
Page 1 of 2

## Performance Charts

