

Surface Mount Frequency Mixer

ADE-12MH+ ADE-12MH

Level 13 (LO Power +13 dBm) 10 to 1200 MHz



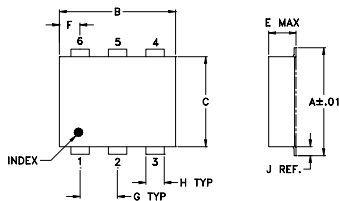
Maximum Ratings

Operating Temperature	-40°C to 85°C
Storage Temperature	-55°C to 100°C
RF Power	200mW
IF Current	40mA

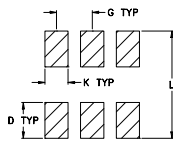
Pin Connections

LO	6
RF	3
IF	2
GROUND	1,4,5

Outline Drawing



PCB Land Pattern



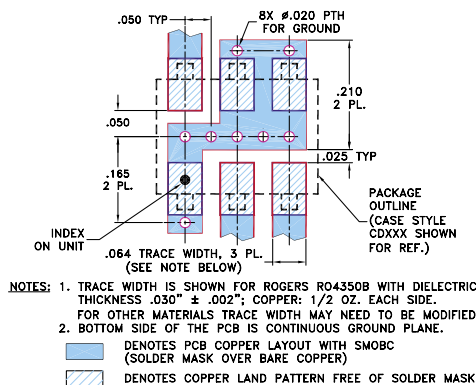
Suggested Layout,
Tolerance to be within ±.002

Outline Dimensions (inch/mm)

A	B	C	D	E	F	G
.272	.310	.220	.100	.112	.055	.100
6.91	7.87	5.59	2.54	2.84	1.40	2.54

H	J	K	L	wt
.030	.026	.065	.300	grams
0.76	0.66	1.65	7.62	0.20

Demo Board MCL P/N: TB-03 Suggested PCB Layout (PL-052)



Features

- low conversion loss, 6.3 dB typ.
- good L-R isolation, 45 dB typ.;
- L-I isolation, 42 dB typ.
- low profile package
- aqueous washable
- protected by U.S. Patent 6,133,525

Applications

- cellular
- VHF/UHF receivers

CASE STYLE: CD542

PRICE: \$6.45 ea. QTY (10-49)

**+ RoHS compliant in accordance
with EU Directive (2002/95/EC)**

The +Suffix identifies RoHS Compliance. See our web site for RoHS Compliance methodologies and qualifications.

Electrical Specifications

FREQUENCY (MHz)	CONVERSION LOSS (dB)	LO-RF ISOLATION (dB)			LO-IF ISOLATION (dB)			IP3 at center band (dBm)										
		L	M	U	L	M	U											
10-1200	DC-1200	6.3	0.10	8.0	8.5	62	45	45	32	40	26	68	40	42	27	30	20	22

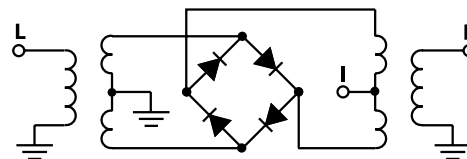
1 dB COMP.: +9 dBm typ.

L = low range [f_L to $10 f_L$] M = mid range [$10 f_L$ to $f_U/2$] U = upper range [$f_U/2$ to f_U]
m = mid band [$2f_L$ to $f_U/2$]

Typical Performance Data

Frequency (MHz)		Conversion Loss (dB)	Isolation L-R (dB)	Isolation L-I (dB)	VSWR RF Port (:1)	VSWR LO Port (:1)
RF	LO	LO +13dBm	LO +13dBm	LO +13dBm	LO +13dBm	LO +13dBm
10.00	40.00	6.42	66.67	60.68	1.54	1.59
15.00	45.00	6.45	65.33	59.84	1.52	1.59
20.00	50.00	6.41	64.50	59.34	1.54	1.56
40.00	70.00	6.40	62.00	56.67	1.55	1.52
70.00	100.00	6.50	58.50	54.67	1.52	1.46
105.74	135.74	6.48	56.16	53.17	1.54	1.48
150.00	180.00	6.56	53.49	52.50	1.56	1.50
210.97	240.97	6.44	51.17	55.51	1.56	1.50
316.21	346.21	6.49	48.50	49.00	1.61	1.50
421.45	451.45	6.61	47.17	44.16	1.62	1.49
526.68	556.68	6.63	45.33	39.67	1.65	1.51
570.00	600.00	6.78	44.67	38.33	1.74	1.56
600.00	630.00	6.77	44.67	38.01	1.73	1.54
737.16	767.16	7.05	45.33	37.17	1.77	1.49
842.40	872.40	7.74	43.17	35.66	1.95	1.46
947.63	977.63	6.98	40.83	32.34	2.07	1.45
1000.00	1030.00	6.54	40.33	30.99	2.10	1.36
1052.87	1082.87	6.37	39.50	29.83	2.13	1.28
1170.00	1200.00	6.60	37.67	29.34	2.28	1.12
1200.00	1230.00	6.70	37.00	29.34	2.41	1.09

Electrical Schematic



Mini-Circuits®
ISO 9001 ISO 14001 CERTIFIED

ALL NEW
minicircuits.com

P.O. Box 350166, Brooklyn, New York 11235-0003 (718) 934-4500 Fax (718) 332-4661 For detailed performance specs & shopping online see Mini-Circuits web site



The Design Engineers Search Engine Provides ACTUAL Data Instantly From MINI-CIRCUITS At: www.minicircuits.com

RF/IF MICROWAVE COMPONENTS

REV. D
M102713
ADE-12MH
ED-7607/1
DJ/TD/CP/AM
070412
Page 1 of 2

Performance Charts

ADE-12MH+ ADE-12MH

