

# Surface Mount Frequency Mixer

# LRMS-1LH+ LRMS-1LH

Level 10 (LO Power +10dBm) 2 to 500 MHz



CASE STYLE: QQQ130  
PRICE: \$7.95 ea. QTY (1-9)

+ RoHS compliant in accordance  
with EU Directive (2002/95/EC)

The +Suffix identifies RoHS Compliance. See our web site  
for RoHS Compliance methodologies and qualifications.

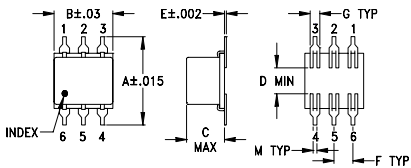
## Maximum Ratings

Operating Temperature	-40°C to 85°C
Storage Temperature	-55°C to 100°C
RF Power	50mW
IF Current	40mA

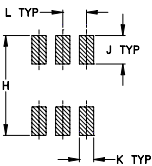
## Pin Connections

LO	1
RF	4
IF	5
GROUND	2,3,6

## Outline Drawing



### PCB Land Pattern

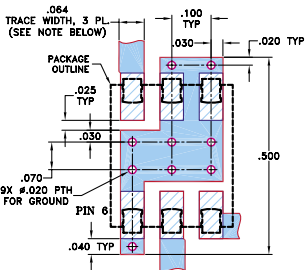


Suggested Layout,  
Tolerance to be within ±.002

## Outline Dimensions (inch/mm)

A	B	C	D	E	F	G	
.400	.31	.200	.10	.010	.100	.050	
10.16	7.87	5.08	2.54	0.25	2.54	1.27	
H	J	K	L	M		wt	
.420	.120	.060	.100	.020		grams	
10.67	3.05	1.52	2.54	0.51		0.55	

## Demo Board MCL P/N: TB-44+ Suggested PCB Layout (PL-083)



- NOTES: 1. TRACE WIDTH IS SHOWN FOR ROGERS RO4350B WITH DIELECTRIC THICKNESS 0.030" ± 0.002"; COPPER: 1/2 OZ. EACH SIDE. FOR OTHER MATERIALS TRACE WIDTH MAY NEED TO BE MODIFIED.  
2. BOTTOM SIDE OF THE PCB IS CONTINUOUS GROUND PLANE.  
■ DENOTES PCB COPPER LAYOUT WITH SMOBC (SOLDER MASK OVER BARE COPPER)  
▨ DENOTES COPPER LAND PATTERN FREE OF SOLDER MASK

## Features

- low conversion loss, 5.36 dB typ.
- excellent L-R isolation, 44 dB typ.

## Applications

- HF/VHF/UHF
- instrumentation
- cellular

## Electrical Specifications

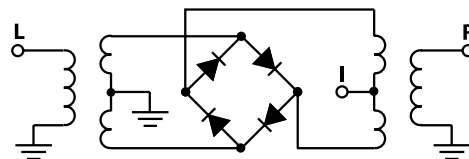
FREQUENCY (MHz)	CONVERSION LOSS (dB)	LO-RF ISOLATION (dB)			LO-IF ISOLATION (dB)			IP3 at center band (dBm)										
		L	M	U	L	M	U											
2-500	DC-500	5.80	.08	7.0	8.0	58	45	44	25	30	20	55	40	40	25	28	17	18

1 dB COMP.: +5 dBm typ. L = low range [ $f_1$  to  $10 f_1$ ] M = mid range [ $10 f_1$  to  $f_1/2$ ] U = upper range [ $f_1/2$  to  $f_1$ ]

## Typical Performance Data

Frequency (MHz)		Conversion Loss (dB)	VSWR RF Port (:1)	Frequency (MHz)	Isolation L-R (dB)	Isolation L-I (dB)	VSWR LO Port (:1)
RF	LO	LO +10dBm	LO +10dBm	LO +10dBm	LO +10dBm	LO +10dBm	LO +10dBm
2.10	32.10	6.37	1.49	10.50	70.41	69.11	2.35
4.10	34.10	6.02	1.27	14.50	68.58	66.80	2.36
6.10	36.10	5.89	1.19	20.50	66.18	64.14	2.33
10.10	40.10	5.86	1.12	24.50	65.07	62.56	2.34
14.10	44.10	5.80	1.10	30.50	63.23	60.51	2.34
18.10	48.10	5.80	1.09	35.00	62.19	59.35	2.34
20.10	50.10	5.83	1.08	40.10	60.93	58.03	2.34
25.10	55.10	5.81	1.08	50.10	59.14	56.14	2.35
50.10	80.10	5.88	1.08	80.10	54.86	51.36	2.34
100.10	130.10	5.86	1.09	105.10	52.51	49.23	2.32
125.10	155.10	5.87	1.10	155.10	49.42	47.19	2.35
150.10	180.10	5.89	1.10	205.10	47.19	45.64	2.34
175.10	205.10	5.92	1.11	255.10	45.16	43.93	2.40
200.10	230.10	5.97	1.12	305.10	44.26	42.34	2.44
250.10	280.10	6.03	1.13	330.10	43.91	41.23	2.48
300.10	330.10	6.05	1.15	355.10	42.98	40.21	2.46
350.10	380.10	6.14	1.16	405.10	41.12	37.43	2.51
400.10	430.10	6.15	1.19	430.10	40.51	36.00	2.52
425.10	455.10	6.14	1.20	455.10	39.78	34.95	2.53
500.00	470.00	6.26	1.21	470.00	39.26	34.54	2.57

## Electrical Schematic



**Mini-Circuits®**  
ISO 9001 ISO 14001 CERTIFIED

ALL NEW  
minicircuits.com

P.O. Box 350166, Brooklyn, New York 11235-0003 (718) 934-4500 Fax (718) 332-4661 For detailed performance specs & shopping online see Mini-Circuits web site



The Design Engineers Search Engine Provides ACTUAL Data Instantly From MINI-CIRCUITS At: [www.minicircuits.com](http://www.minicircuits.com)

RF/IF MICROWAVE COMPONENTS

REV. B  
M110702  
LRMS-1LH  
DJ/JL/CP/AM  
070522  
Page 1 of 2

## Performance Charts

