

Surface Mount Frequency Mixer

LRMS-1H+ LRMS-1H

Level 17 (LO Power +17dBm) 2 to 500 MHz



Maximum Ratings

Operating Temperature	-40°C to 85°C
Storage Temperature	-55°C to 100°C
RF Power	200mW
IF Current	40mA

Pin Connections

LO	1
RF	4
IF	5
GROUND	2,3,6

Features

- low conversion loss, 6.25 dB typ.
- excellent L-R isolation, 44 dB typ.

Applications

- HF/VHF/UHF
- instrumentation

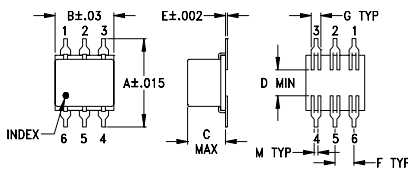
CASE STYLE: QQQ130

PRICE: \$10.95 ea. QTY (1-9)

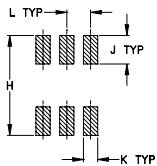
+ RoHS compliant in accordance with EU Directive (2002/95/EC)

The +Suffix identifies RoHS Compliance. See our web site for RoHS Compliance methodologies and qualifications.

Outline Drawing



PCB Land Pattern

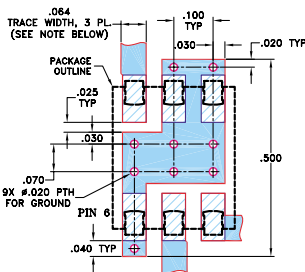


Suggested Layout,
Tolerance to be within ±.002

Outline Dimensions (inch/mm)

A	B	C	D	E	F	G	H	J	K	L	M	wt
.400	.31	.200	.10	.010	.100	.050	.420	.120	.060	.100	.020	grams
10.16	7.87	5.08	2.54	0.25	2.54	1.27	10.67	3.05	1.52	2.54	0.51	0.55

Demo Board MCL P/N: TB-44 Suggested PCB Layout (PL-083)



NOTES: 1. TRACE WIDTH IS SHOWN FOR ROGERS RO4350B WITH DIELECTRIC THICKNESS 0.030" ± 0.002"; COPPER: 1/2 OZ. EACH SIDE. FOR OTHER MATERIALS TRACE WIDTH MAY NEED TO BE MODIFIED.

2. BOTTOM SIDE OF THE PCB IS CONTINUOUS GROUND PLANE.

■ DENOTES PCB COPPER LAYOUT WITH SMOBC (SOLDER MASK OVER BARE COPPER)

▨ DENOTES COPPER LAND PATTERN FREE OF SOLDER MASK

Electrical Specifications

FREQUENCY (MHz)	CONVERSION LOSS (dB)	LO-RF ISOLATION (dB)			LO-IF ISOLATION (dB)			IP3 at center band (dBm)						
		L	M	U	L	M	U							
2-500	DC-500	55	44	44	25	33	20	50	34	45	25	37	22	25

1 dB COMP.: +14 dBm typ.

L = low range [f_l to $10 f_l$]
m = mid band [$2 f_l$ to $f_l/2$]

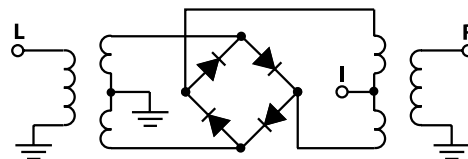
M = mid range [$10 f_l$ to $f_l/2$]

U = upper range [$f_l/2$ to f_l]

Typical Performance Data

Frequency (MHz)		Conversion Loss (dB)	Isolation L-R (dB)	Isolation L-I (dB)	VSWR RF Port (:1)	VSWR LO Port (:1)
RF	LO	LO +17dBm	LO +17dBm	LO +17dBm	LO +17dBm	LO +17dBm
2.00	32.00	6.78	79.29	69.19	1.33	1.77
4.00	34.00	6.60	72.35	63.39	1.20	1.75
5.00	35.00	6.57	71.51	62.98	1.15	1.82
10.00	40.00	6.55	65.84	61.30	1.14	1.82
20.00	50.00	6.48	59.50	58.68	1.13	1.75
35.20	65.20	6.36	51.64	53.67	1.14	1.75
50.00	80.00	6.53	51.61	53.63	1.14	1.76
85.00	55.00	6.47	45.13	48.67	1.15	1.74
100.00	70.00	6.48	44.98	48.52	1.17	1.71
134.80	104.80	6.32	41.19	46.50	1.19	1.69
184.60	154.60	6.35	38.78	44.90	1.22	1.65
200.00	170.00	6.40	38.62	44.42	1.23	1.62
234.40	204.40	6.30	36.44	41.20	1.24	1.63
250.00	220.00	6.22	36.14	41.01	1.26	1.62
284.20	254.20	6.22	35.11	38.57	1.30	1.58
334.00	304.00	6.18	33.38	37.07	1.34	1.54
383.80	353.80	6.11	32.33	33.77	1.39	1.51
433.60	403.60	6.16	32.22	31.10	1.44	1.45
483.40	453.40	6.45	31.29	29.09	1.47	1.41
500.00	470.00	6.45	30.80	28.30	1.49	1.39

Electrical Schematic



Mini-Circuits
ISO 9001 ISO 14001 CERTIFIED

ALL NEW
minicircuits.com

P.O. Box 350166, Brooklyn, New York 11235-0003 (718) 934-4500 Fax (718) 332-4661 For detailed performance specs & shopping online see Mini-Circuits web site



The Design Engineers Search Engine Provides ACTUAL Data Instantly From MINI-CIRCUITS At: www.minicircuits.com

RF/IF MICROWAVE COMPONENTS

REV. B
M102713
LRMS-1H
DJ/FL/CP/AM
061229
Page 1 of 2

Performance Charts

