



TAI-SAW TECHNOLOGY CO., LTD.

No. 3, Industrial 2nd Rd., Ping-Chen Industrial District,
Taoyuan, 324, Taiwan, R.O.C.

TEL: 886-3-4690038 FAX: 886-3-4697532

E-mail: tstsales@mail.taisaw.com Web: www.taisaw.com

Approval Sheet For Product Specification

Issued Date: Sep, 3, 2008

Product Name: SAW Filter 2040 MHz SMD 3.0X3.0 mm

TST Parts No.: TA0892A

Customer Parts No.: _____

Company: _____
Division: _____
Approved by : _____
Date: _____

Checked by: _____ Bob Chau *Bob Chau*

Approval by: _____ Francis Chen *Francis Chen*

Date: _____ 9, 3, 2008



TAI-SAW TECHNOLOGY CO., LTD.

No. 3, Industrial 2nd Rd., Ping-Chen Industrial District,
Taoyuan, 324, Taiwan, R.O.C.

TEL: 886-3-4690038 FAX: 886-3-4697532

E-mail: tstsales@mail.taisaw.com Web: www.taisaw.com

SAW Filter 2040 MHz

MODEL NO.:TA0892A

REV. NO.:1

A. MAXIMUM RATING:

1. Input Power Level: 10 dBm
2. DC Voltage : 3V
3. Operating Temperature: -40°C to +85°C
4. Storage Temperature: -50°C to +95°C

RoHS Compliant
Lead free
Lead-free soldering

B. ELECTRICAL CHARACTERISTICS:

Terminating source impedance (differential) : $Z_s = 150 \Omega // 18 \text{ nH}$

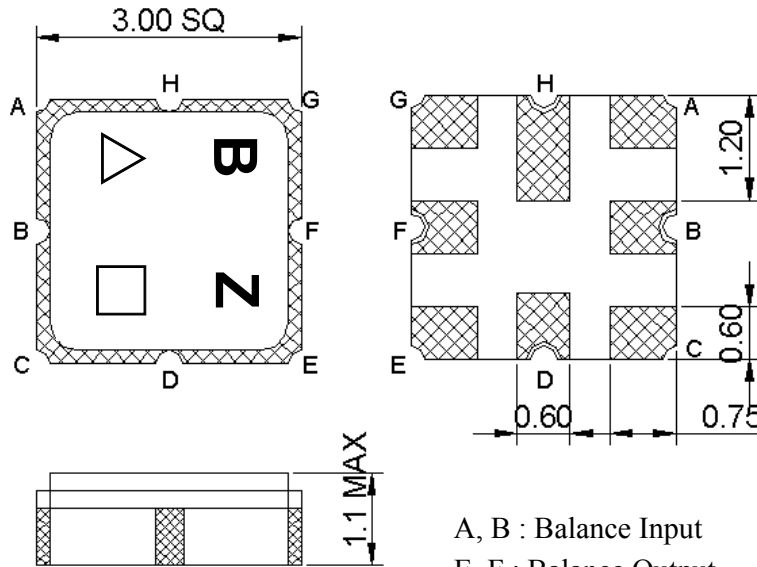
Terminating load impedance (differential) : $Z_L = 150 \Omega // 18 \text{ nH}$

Item	Unit	Min.	Typ.	Max.	Note
Center Frequency Fc	MHz	-	2040	-	-
Bandwidth at -2 dB	MHz	60	77	-	-
Insertion Loss in 2010~2070 MHz	dB	-	3.3	5	-
Amplitude ripple (2010 MHz ~ 2070 MHz)	dB	-	1.4	2	-
Phase error (2010 MHz ~ 2070 MHz) (3)	deg	-	2.5	5	-
I/O VSWR (2010 MHz ~ 2070 MHz)		-	1.9	2.5	-
CMDR (2010 MHz ~ 2070 MHz)	dB	23	27	-	-
Attenuation (1)					
50 ~ 1950 MHz	dB	42	45	-	-
2130 ~ 3000 MHz	dB	42	50	-	-
3000 ~ 4000 MHz	dB	35	42	-	-
4000 ~ 6000 MHz	dB	30	37	-	-

Notes :

- (1) The amplitude reference is insertion loss at Fc.
- (2) The amplitude ripple is defined as the max. level – min. level over any 36 MHz block of the given bandwidth.
- (3) The phase error is measured over any 36 MHz block of the given bandwidth.

C.OUTLINE DRAWING:

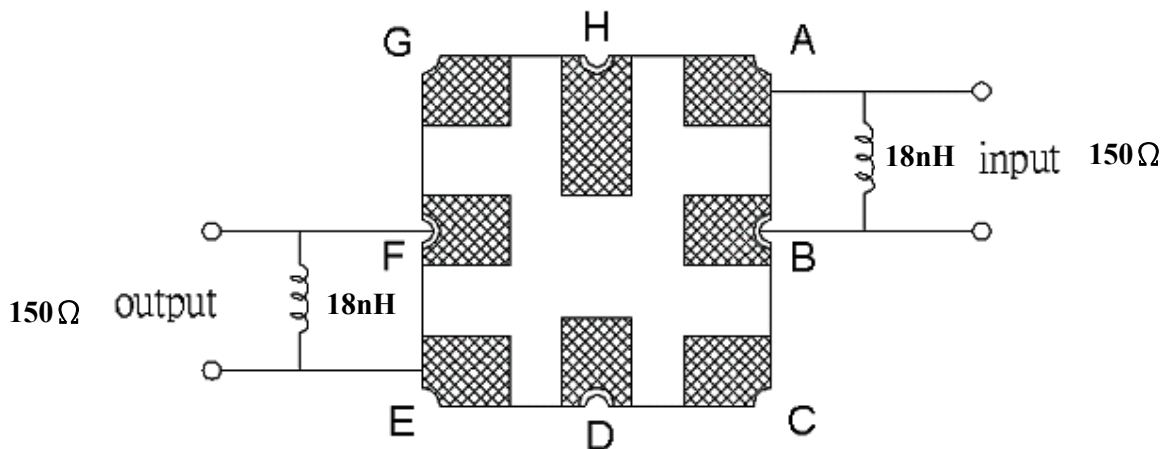


A, B : Balance Input
 E, F : Balance Output
 C,D,G,H : Ground
 Unit : mm

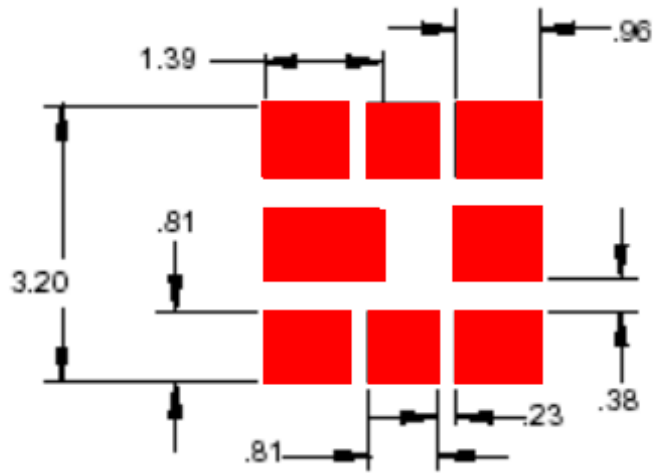
△ : Year Code (2006->6, ..., 2009->9)

□ : Date Code (Follow the table from planner each year)

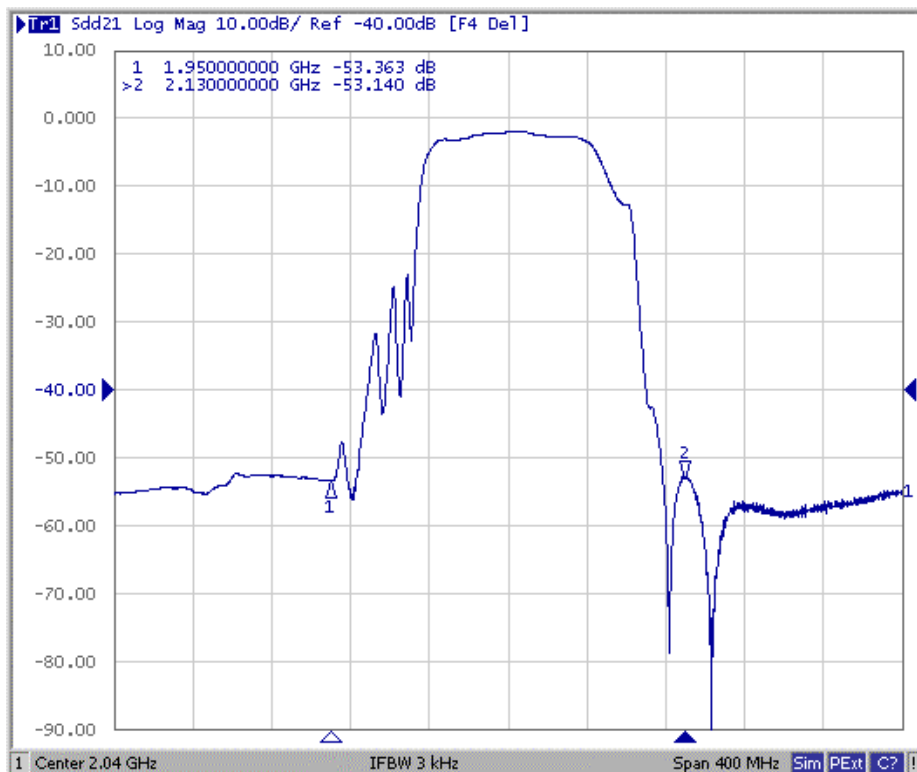
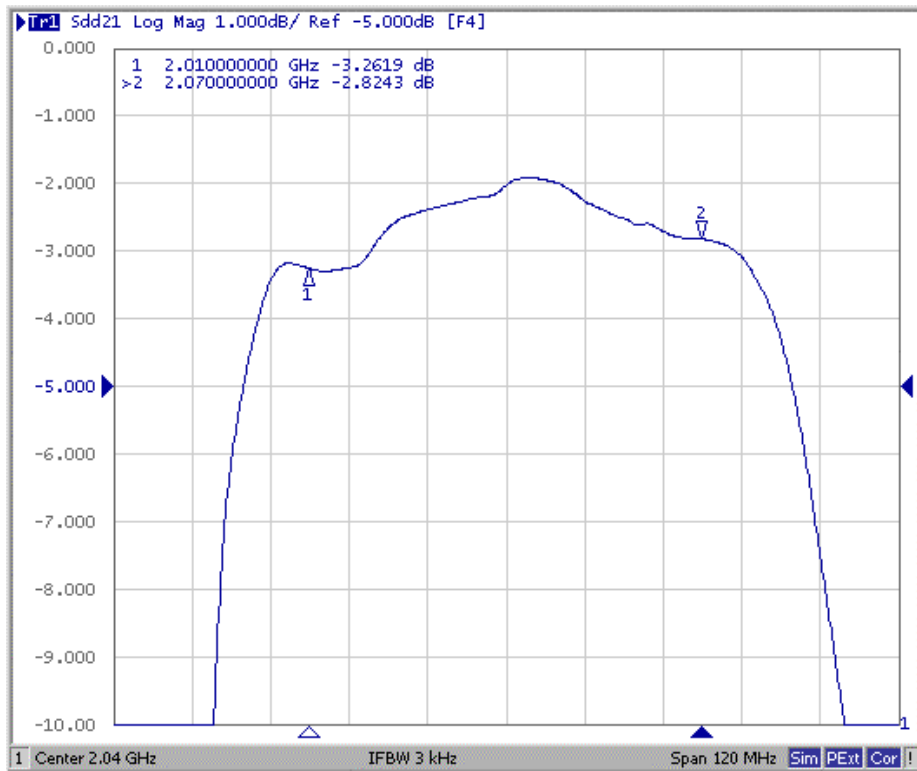
D. MEASUREMENT CIRCUIT:

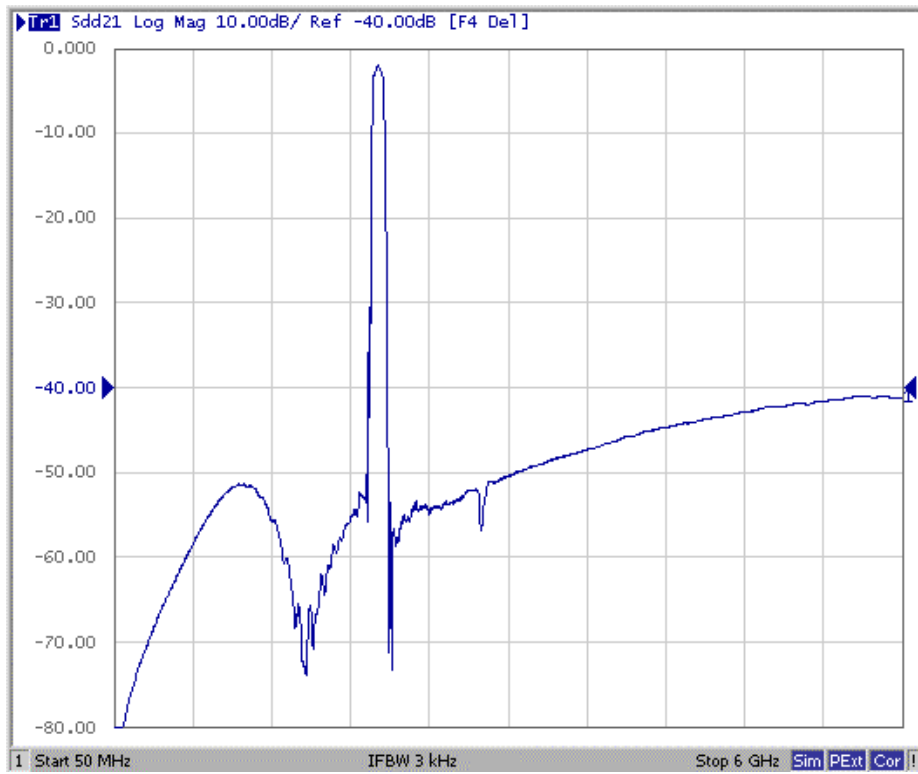


E. PCB Footprint:



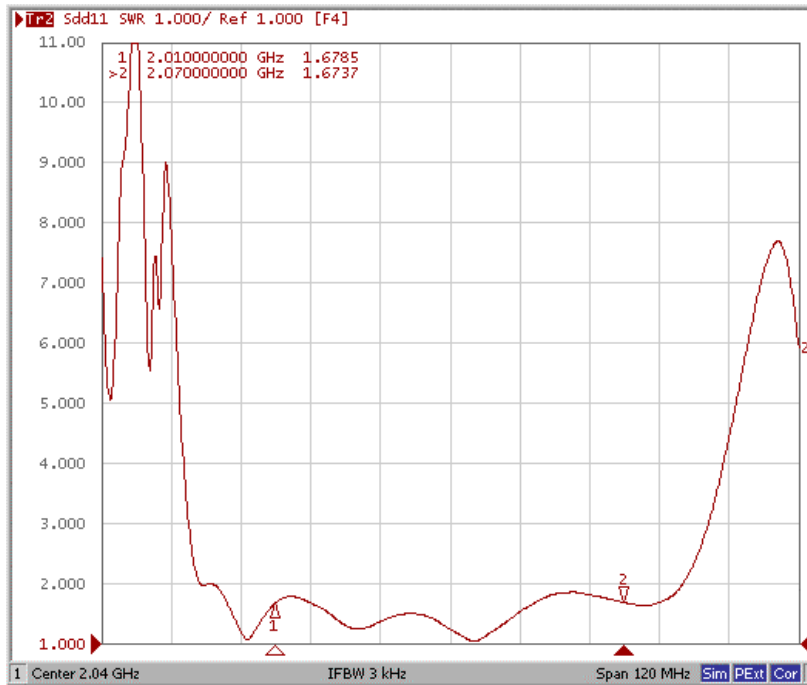
F. Frequency Characteristics :



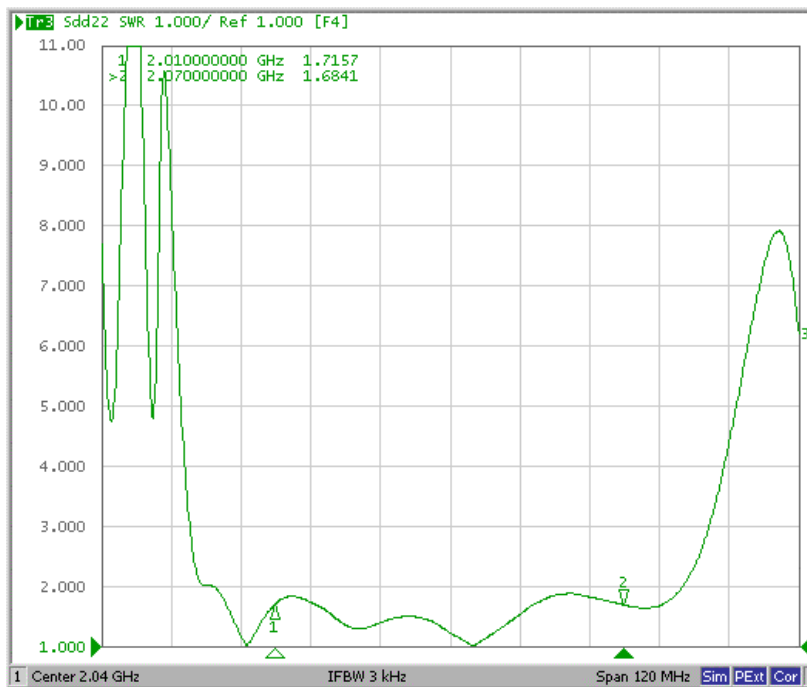


Reflection Functions :

S11



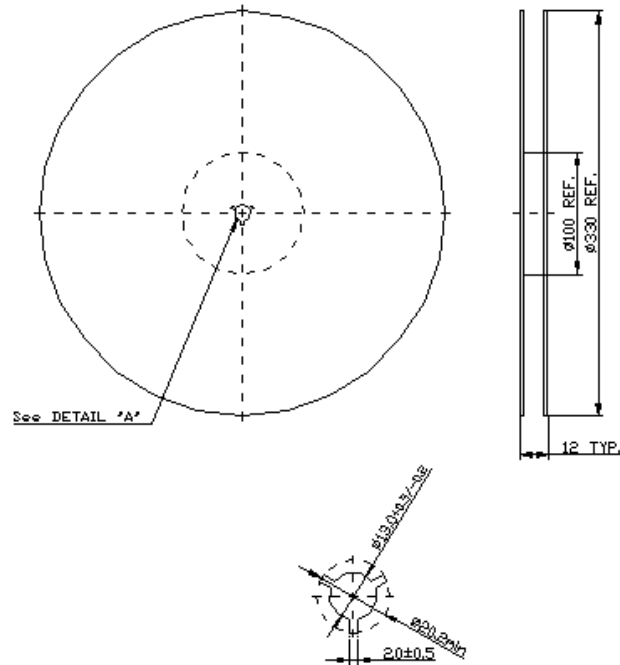
S22



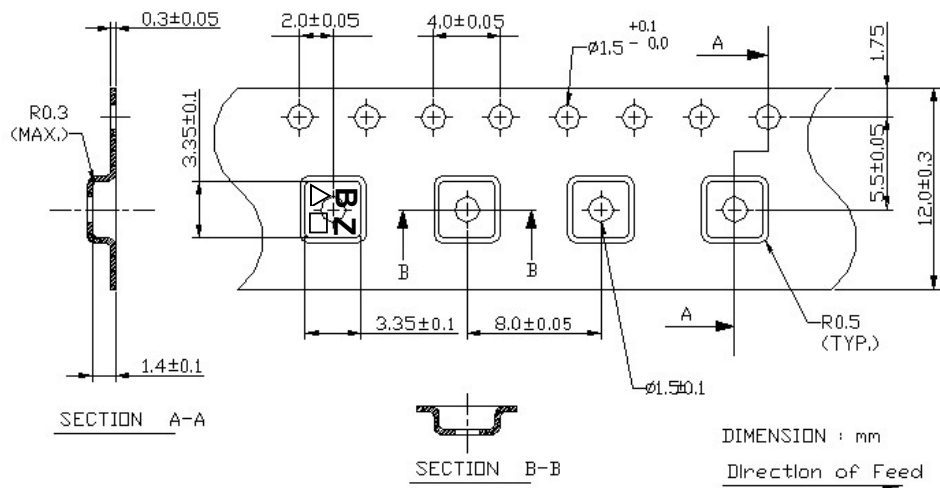
G. PACKING:

1. REEL DIMENSION

(Reel Count : 7"=1000 ; 13"=3000)



2. TAPE DIMENSION



H. RECOMMENDED REFLOW PROFILE :

