

TAI-SAW TECHNOLOGY CO., LTD.

No. 3, Industrial 2nd Rd., Ping-Chen Industrial District,
Taoyuan, 324, Taiwan, R.O.C.

TEL: 886-3-4690038 FAX: 886-3-4697532

E-mail: tstsales@mail.taisaw.com Web: www.taisaw.com

Product Specifications Approval Sheet

Product Description: SAW Filter 609.9 MHz SMD 5.0X5.0mm

TST Parts No.: TA0800A

Customer Parts No.: _____

Customer signature required
Company: _____
Division: _____
Approved by : _____
Date: _____

Checked by: _____ Andy Yu *Andy*

Approval by: _____ Francis Chen *Francis Chen*

Date: _____ 2009/09/29

1. Customer signed back is required before TST can proceed with sample build and receive orders.
2. Orders received without customer signed back will be regarded as agreement on the specifications.
3. Any specifications changes must be approved upon by both parties and a new revision of specifications shall be released to reflect the changes.



TAI-SAW TECHNOLOGY CO., LTD.

No. 3, Industrial 2nd Rd., Ping-Chen Industrial District,
Taoyuan, 324, Taiwan, R.O.C.

TEL: 886-3-4690038 FAX: 886-3-4697532

E-mail: tstsales@mail.taisaw.com Web: www.taisaw.com

SAW Filter 609.9 MHz

MODEL NO.: TA0800A

REV. NO.:1.0

A. MAXIMUM RATING:

1. Input Power Level: 10 dB_m
2. DC voltage: 5 V
3. Operating Temperature: -40°C to +85°C
4. Storage Temperature: -40°C to +85°C

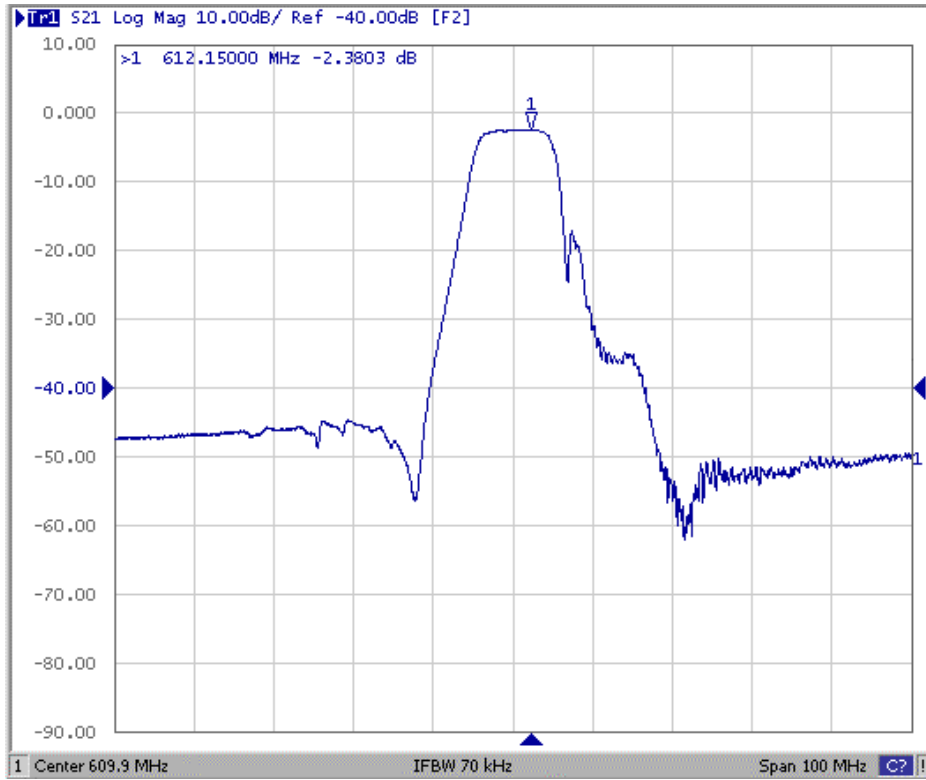
RoHS Compliant
Lead free
Lead-free soldering

B. ELECTRICAL CHARACTERISTICS:

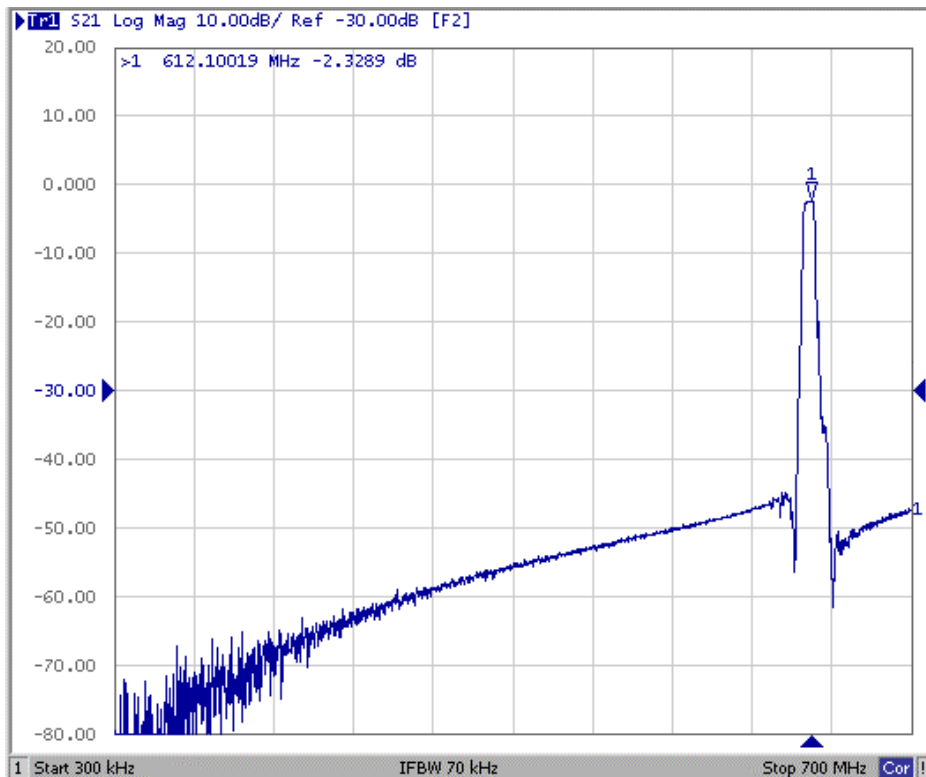
Item	Unit	Min.	Type.	Max.	
Center frequency	Fo	MHz	-	609.9	-
Insertion loss at Fo	IL	dB	-	2.4	3.5
1 dB bandwidth		MHz	3	8.76	-
3 dB bandwidth		MHz	5	10.08	-
Ripple (608.4~611.4 MHz)		dB	-	0.2	1.0
Group Delay (608.4~611.4 MHz)		ns	-	35	135
Attenuation (Reference level from IL)					
10 ~ 590 MHz		dB	40	43	-
590 ~ 600 MHz		dB	8	33	-
620 ~ 630 MHz		dB	8	28	-
630 ~ 700 MHz		dB	40	48	-

C. Frequency Characteristics :

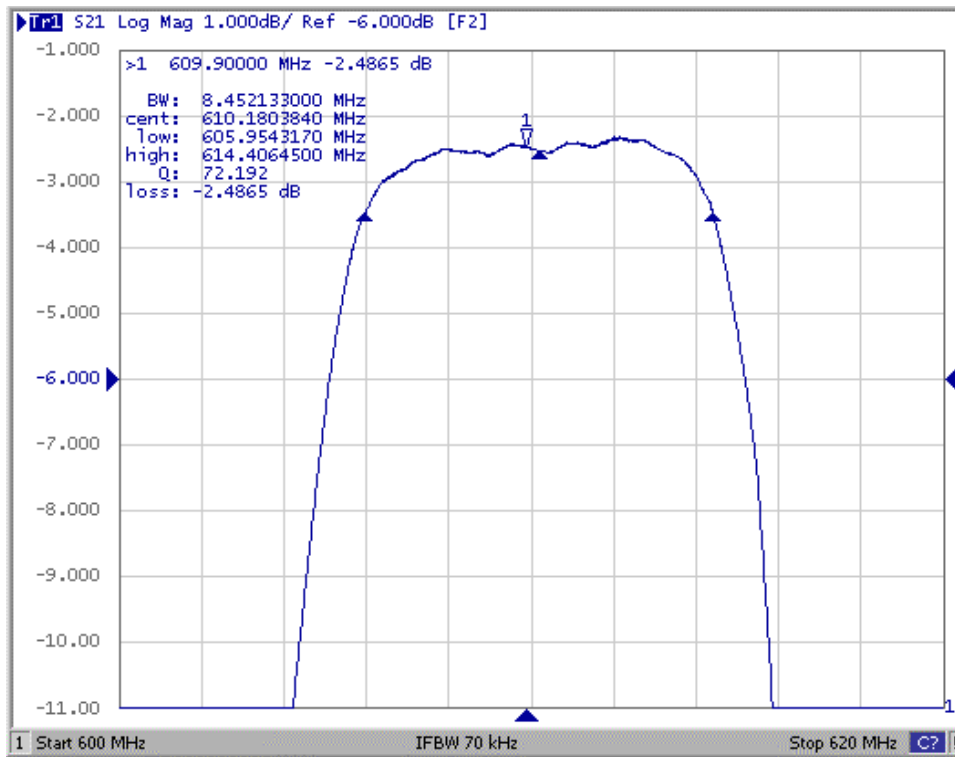
(1) wide band Response:(span 100MHz)



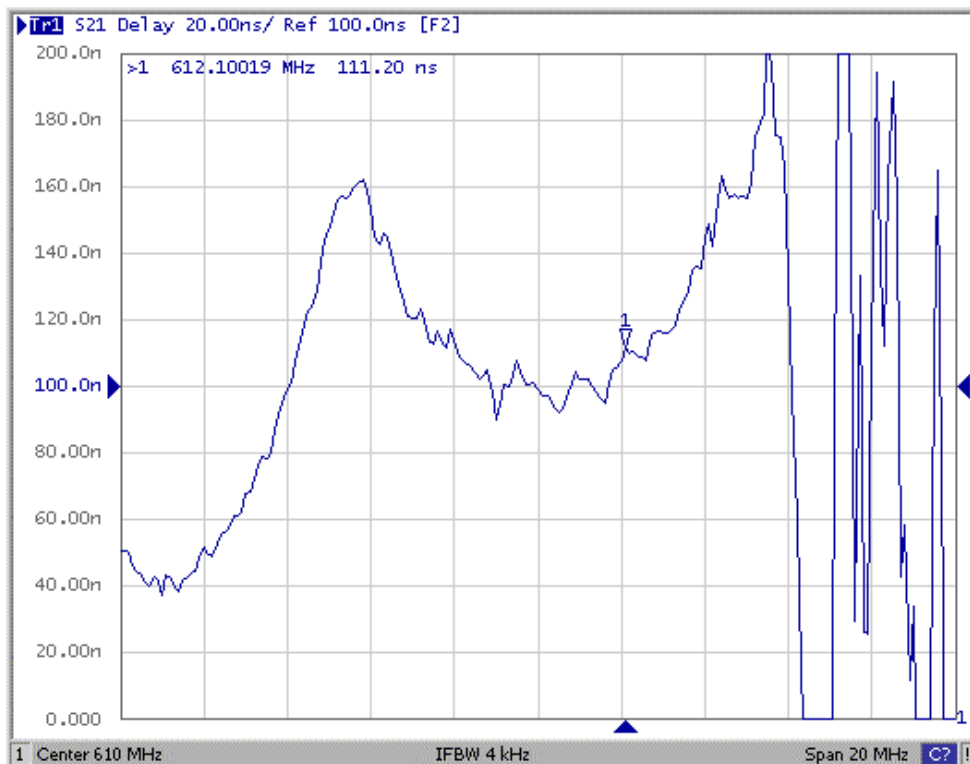
(2) wide band Response:(0 ~ 700MHz)



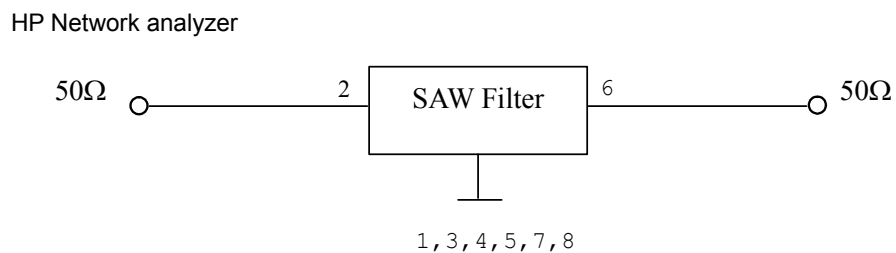
(2) Pass band Response Variation: (span 20MHz)



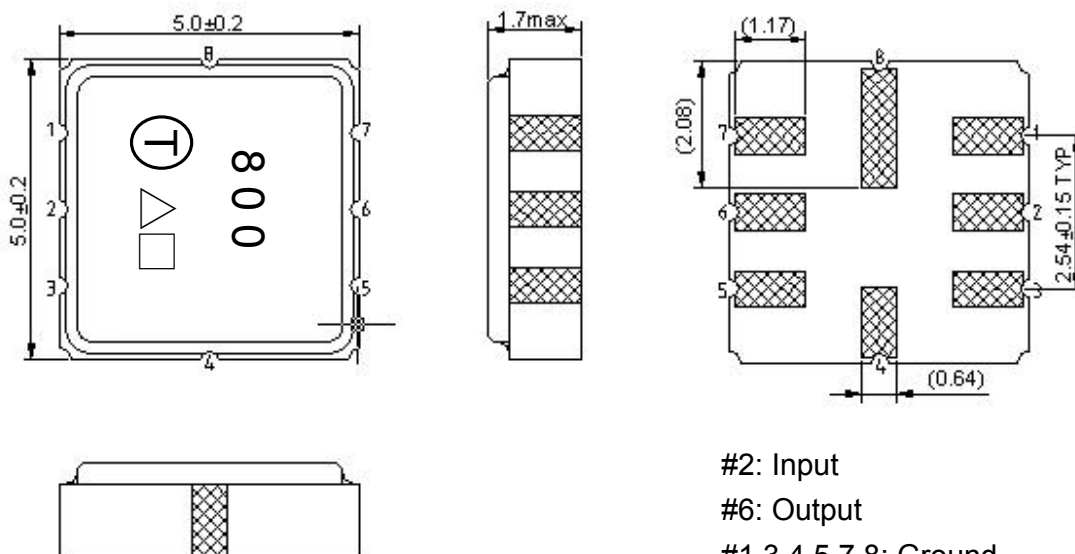
(2) Group Delay Variation: (span 20MHz)



D. MEASUREMENT CIRCUIT:



E. OUTLINE DRAWING:

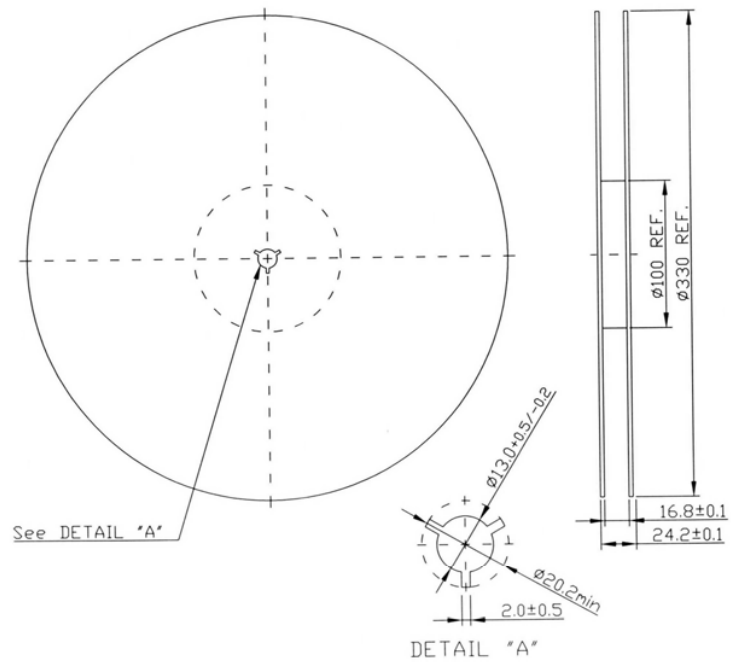


#2: Input
 #6: Output
 #1,3,4,5,7,8: Ground
 △: Year code
 □: Date code
 Unit: mm

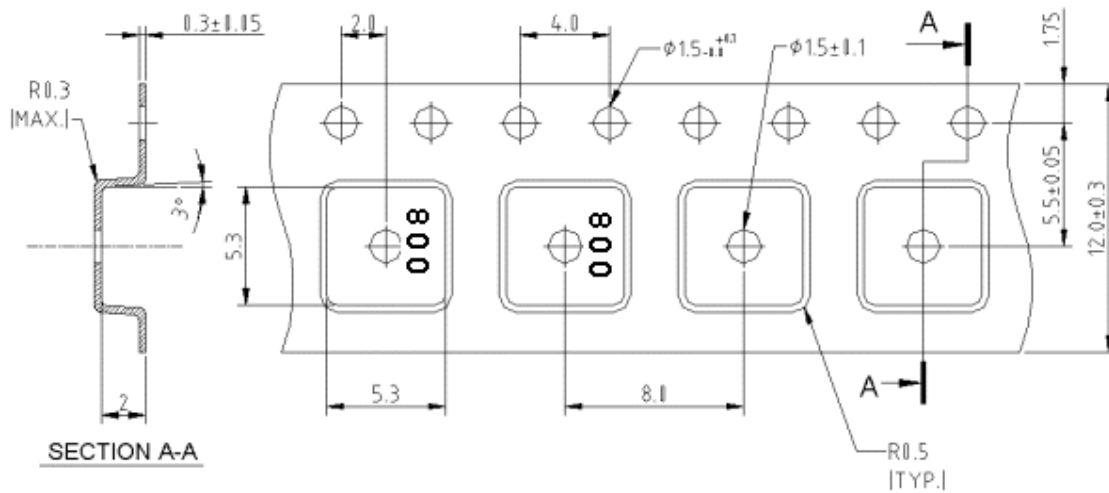
Year	2005 2009	2006 2010	2007 2011	2008 2012
Product Code	A	a	<u>A</u>	<u>a</u>

F. PACKING:

1. REEL DIMENSION



2. TAPE DIMENSION



G. RECOMMENDED REFLOW PROFILE :

