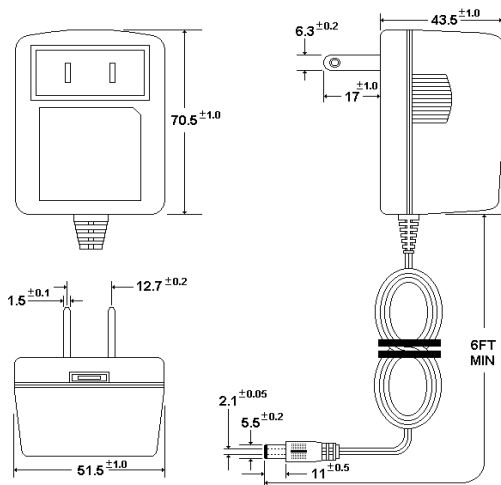


**PRODUCT**      **UL/CSA** AC/DC Adaptor  
 EI-41    AM- Series 2

**Descriptions:**

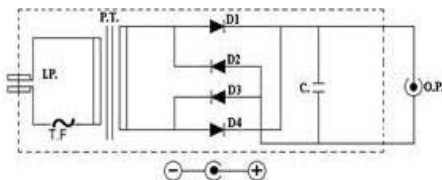
These models were designed to EI-41 core size. It provided US 2 prong plug for input and provided a 6FT lead wire with coax plug for output .  
 These power supplies offered varies DC output voltages and currents.  
 Plug-in type designed only.

**Outline:    unit in mm**    Case size: 70.5x51.5x43.5 (LxWxH) mm

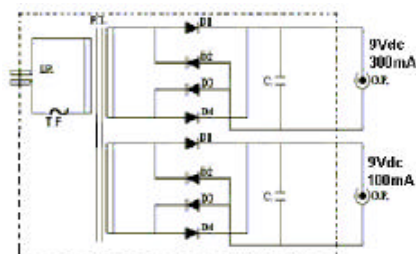


Case material: NORYL SE-100P or SE-100 UL 94V-1

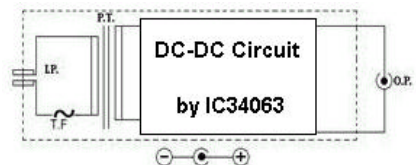
**Circuit Drawing:**



CKT (1)



CKT (2)



CKT (3)

**Model List**

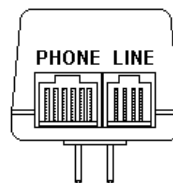
MODEL NO.	OUTPUT RATING		SAFETY MARKING			Circuit
	V (DC)	mA	UL	C-UL	CSA	
AM-151500I	1.5	1500	*	*		CKT 3
AM-6400-1	6	400	*	*	*	CKT 1
AM-9300-1	9	300	*	*	*	CKT 1
AM-9400	9	400	*	*	*	CKT 1
AM-9450	9	450	*	*	*	CKT 1
AM-9600	9	600	*	*	*	CKT 1
AM-93009100	9	300	*	*		CKT 2
	9	100				

# AM-151500I is designed to regulated adaptor

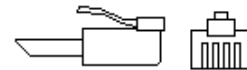
**GENERAL SPECIFICATIONS**

Input voltage	120Vac 60Hz
Rated output rating	1.5, 6, 9VDC ± 5% @ 5.4VA Max.
Output no-load voltage	150% output voltage Max. (Nom.) 1.75Vdc Max. for AM-151500I
Exciting current	50mA Max.
Protection	Thermal fuse protection (Optional)
Ripple Noise	700mV R.M.S Max. 40mV R.M.S Max. for AM-151500I
Dielectric strength	Input – Output 1.24 KV for 1 minute
Insulation resistance	500VDC 100MΩ Minimum
Efficiency	55% Normally @ rated load
Temperature rise	65 deg Max. @ rated load
Applicable standard	UL 1310 & CSA 22.2 No.223
Agency safety	UL/CUL/CSA
Normal operating environment	-10 °C ~ 40 °C    20% ~ 80% R.H
Storage environment	-20 °C ~ 70 °C    20% ~ 90% R.H

**Output connection options for AM-93009100**



(1) Phone jack socket



(2) Phone jack cable (AWG#26 6FT)