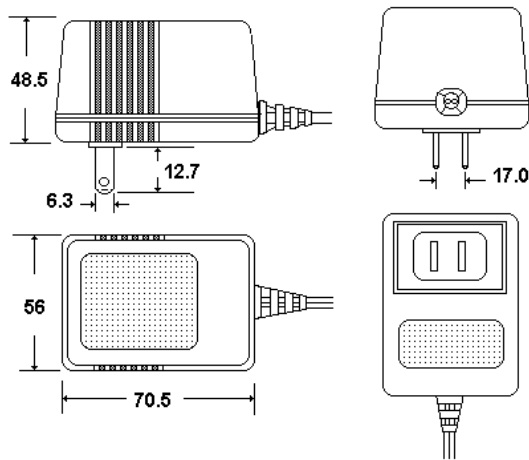


**PRODUCT** *UL/CSA* AC/DC Adaptor  
EI-48 AM- Series

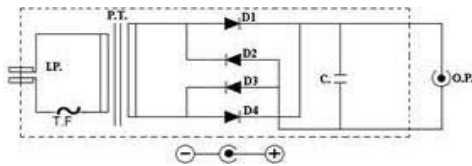
**Descriptions:**

These models were designed to EI-48 core size. It provided US 2 prong plug for input and provided a 6FT lead wire with coax plug for output .  
These power supplies offered varies DC output voltages and currents.  
Plug-in type designed only.

**Outline:** unit in mm Case size: 70.5x56x48.5 (LxWxH) mm



**Circuit Drawing:**



I/P: Input plug (US 2 pin UL 498)  
T.F: Thermal Fuse 130 °C or 115 °C 1A (Optional) or without fuse  
D1~D4: Diode 1N4002 1.0A 100V Minimum.  
P.T: Transformer EI-48 open core  
C: Capacitor 470uF/16V 85 °C **Min.**  
O/P: Output plug (coax plug) Output cable: AWG# 24 UL 2468  
Case material: NORYL SE-100P or SE-100 UL 94V-1

**Model List**

MODEL NO.	OUTPUT RATING		SAFETY MARKING		
	V (DC)	mA	UL	C-UL	CSA
AM-61000	6	1000	*		*
AM-9800	9	800	*		*
AM-91000	9	1000	*		*
AM-12600	12	600	*		*
AM-12800	12	800	*		*
AM-15600	15	600	*		*
AM-17600	17	600	*	*	
AM-19455	19	455	*	*	*
AM-24300	24	300	*		*

**GENERAL SPECIFICATIONS**

Input voltage	120Vac 60Hz
Rated output rating	6 ~24VDC ±5% @ 10.2VA Max.
Output no-load voltage	150% output voltage Max. (Nom.)
Exciting current	70mA Max.
Protection	Class 2 inherently limit or Protected by thermal fuse
Ripple Noise	700mV R.M.S Max.
Dielectric strength	Input – Output 1.24 KV for 1 minute
Insulation resistance	500VDC 100MΩ Minimum
Efficiency	55% Normally @ rated load
Temperature rise	75 deg Max. @ rated load
Applicable standard	UL 1310 & CSA 22.2 No.223
Agency safety	UL/CUL/CSA
Normal operating environment	-10 °C ~ 40 °C 20% ~ 80% R.H
Storage environment	-20 °C ~ 70 °C 20% ~ 90% R.H

**Various Uses**



Doc. UL48DC-01 Rev. A-0