

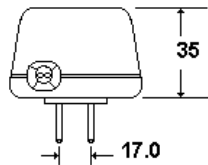
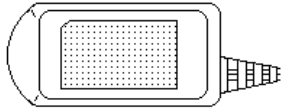
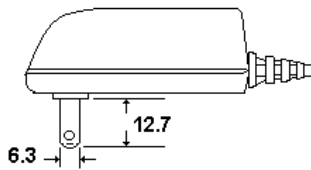
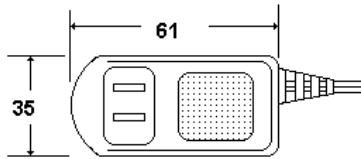
PRODUCT *UL/CSA* AC/DC Adaptors
EI-28 AM- Series

Model List

Descriptions:

These models were designed to EI-28 core size. It provides US 2 prong plug for input and provided a 6FT lead wire with coax plug for output . These power supplies offered varies DC output voltages and currents. It provides the quite sleek housing and very light weights.

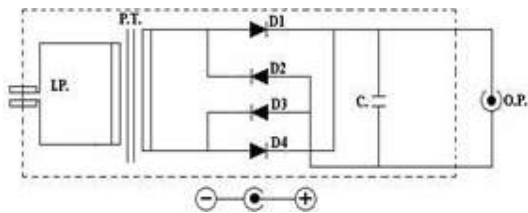
Outline: unit in mm Case size: 61x35x35 (LxWxH) mm



Output cable: AWG# 24 UL 2468

Case material: NORYL SE-100P or SE-100 UL 94V-1

Circuit Drawing:



I/P: Input plug (US 2 pin UL 498)

D1~D4: Diode 1N4002 1.0A 100V

P.T: Transformer EI-28 open core

C: Capacitor 470uF/16V 85 Min.

O/P: Output plug (coax plug)

MODEL NO.	OUTPUT RATING		SAFETY MARKING		
	V (DC)	mA	UL	C-UL	CSA
AM-6200-1	6	200	*	*	*
AM-9100-2	9	100	*	*	*
AM-9150-1	9	150	*	*	*
AM-12100-1	12	100	*	*	*



UL file# E112794

CSA file# LR81670

GENERAL SPECIFICATIONS

Input voltage	120Vac 60Hz
Rated output rating	6,9,12 VDC $\pm 5\%$ @ 1.35VA Max.
Output no-load voltage	150% output voltage Max. (Nom.)
Exciting current	45mA Max.
Protection	Class 2 inherently limit
Ripple Noise	700mV R.M.S Max.
Dielectric strength	Input – Output 1.24 KV for 1 minute
Insulation resistance	500VDC 100M Minimum
Efficiency	55% Normally @ rated load
Temperature rise	65 deg Max. @ rated load
Applicable standard	UL 1310 & CSA 22.2 No.223
Agency safety	UL/CUL/CSA
Normal operating environment	-10 ~ 40 20% ~ 80% R.H
Storage environment	-20 ~ 70 20% ~ 90% R.H

FEATURES:

- Low heat generation.
- Class 2 inherently limit
- Graceful appearance. Sleek shape



Presented by Global Yeou Diann Electric Industrial Co., Ltd.

Doc. UL28DC-01 Rev. A-0