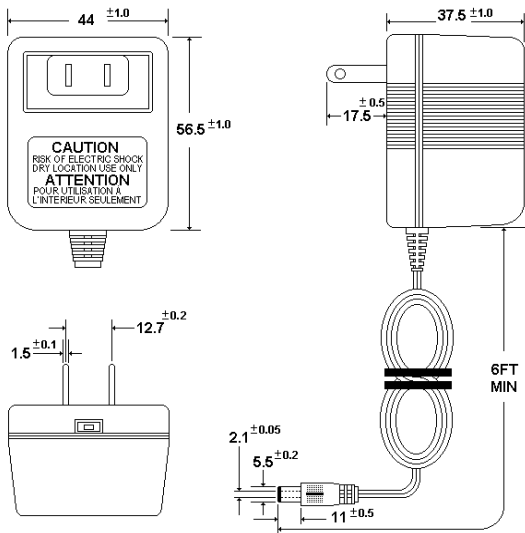


PRODUCT *UL/CSA AC/DC Adaptor*
EI-35 AM- Series

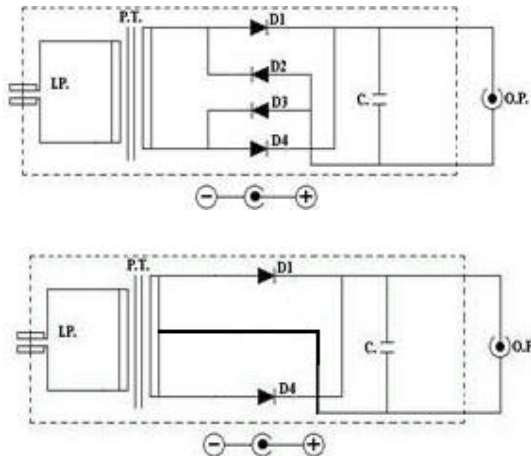
Descriptions:

These models were designed to EI-35 core size. It provided US 2 prong plug for input and provided a 6FT lead wire with coax plug for output. These power supplies offered varies DC output voltages and currents. Plug-in type designed only.

Outline: unit in mm Case size: 56.5x44x37.5 (LxWxH) mm



Circuit Drawing:



I/P: Input plug (US 2 pin UL 498)

D1~D4: Diode 1N4002 1.0A 100V / Bridge(4) & Full wave(2) rectifier

P.T: Transformer EI-35 open core

C: Capacitor 470uF/16V 85 Min.

O/P: Output plug (coax plug) Output cable: AWG# 24 UL 2468

Case material: NORYL SE-100P or SE-100 UL 94V-1

Model List

MODEL NO.	OUTPUT RATING		SAFETY MARKING		
	V (DC)	mA	UL	C-UL	CSA
AM-3300I *	3	300	*	*	
AM-45500	4.5	500	*		
AM-6200	6	200	*		*
AM-6400	6	400	*		
AM-75300	7.5	300	*		*
AM-9100	9	100	*		
AM-9100-1	9	100	*	*	
AM-9150	9	150	*		*
AM-9170	9	170	*	*	
AM-9200	9	200	*		*
AM-9250	9	250	*	*	
AM-9300	9	300	*		*
AM-9350	9	350	*	*	
AM-1250	12	50	*		
AM-12100	12	100	*		*
AM-18150	18	150	*		*

* Note: AM-3300I is a Regulated voltage power adaptor

GENERAL SPECIFICATIONS

Input voltage	120Vac 60Hz
Rated output rating	3 ~18VDC ±5% @ 3.15VA Max.
Output no-load voltage	150% output voltage Max. (Nom.)
Exciting current	50mA Max.
Protection	Class 2 inherently limit
Ripple Noise	700mV R.M.S Max. <u>10mV R.M.S Max. for AM-3300I</u>
Dielectric strength	Input – Output 1.24 KV for 1 minute
Insulation resistance	500VDC 100M Minimum
Efficiency	55% Normally @ rated load
Temperature rise	65 deg Max. @ rated load
Applicable standard	UL 1310 & CSA 22.2 No.223
Agency safety	UL/CUL/CSA
Normal operating environment	-10 ~ 40 20% ~ 80% R.H
Storage environment	-20 ~ 70 20% ~ 90% R.H

Presented by **Global Yeou Diann Electric Industrial Co., Ltd.**

Doc. UL35DC-01 Rev. A-0