



INDUSTRIAL RELAYS

UL & CUL File #E223388

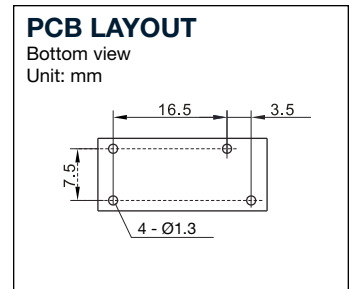
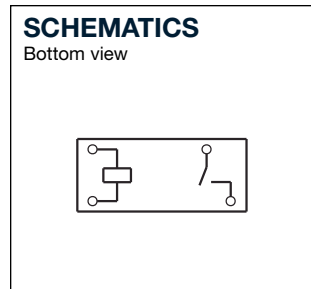
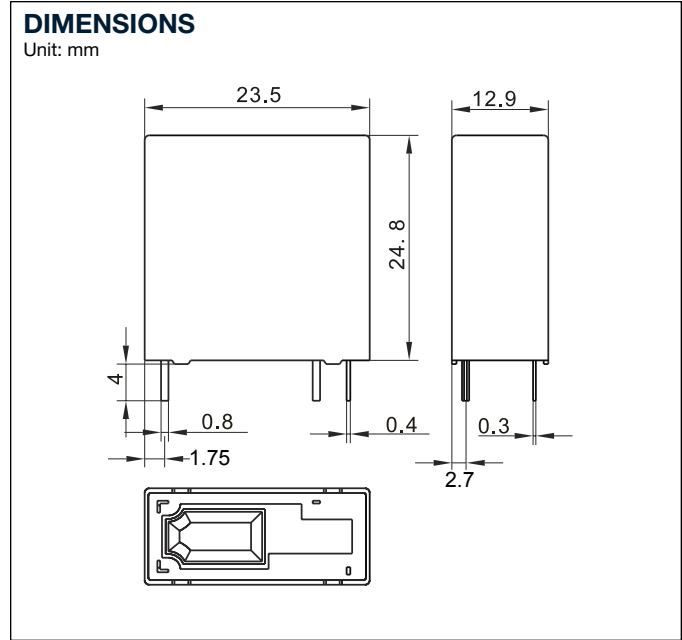
FEATURES

1. Contact capacity of 5A and 10A available.
2. Double insulation construction for high reliability.
3. Insulation distance of 6.0 mm.
4. Complete sealed type available if required.

ORDERING INFORMATION

RX 1A- 12 S L
(1) (2) (3) (4) (5)

- | | |
|---|--|
| <p>1) Basic Designation
RX = RX Series</p> <p>(2) Coil Arrangement
1A = 1 Form A (SPST-NO)</p> <p>(3) Coil Voltage</p> | <p>(4) Enclosure
Nil = Unsealed type
S = Sealed type</p> <p>(5) Coil Power
L = 0.25W
Nil = 0.54W</p> |
|---|--|



COIL RATINGS (AT 20°C)

Coil Nominal Voltage (VDC)	Nominal Current (mA)	Coil Resistance $\Omega(\pm 10\%)$	Drop-Out Voltage (VDC) min.	Pick-Up Voltage (VDC) max.	Nominal Operating Power (W)	Max. Allowable Voltage (VDC)
3	176.47	17	10%	75%	Abt. 0.54	130% of nominal voltage
5	106.38	47				
6	88.24	68				
9	44.44	155				
12	58.06	270				
18	30.00	600				
24	21.82	1,100				
48	10.91	4,400				





CONTACT RATINGS

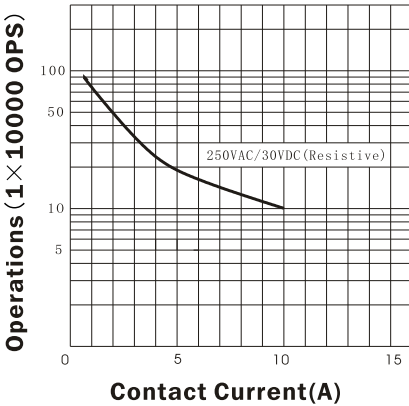
Contact Arrangement	1A
Max. Switching Power	2500VA 300W
Max. Switching Voltage	250VAC 30VDC
Max. Switching Current	10A
Contact Resistance (By voltage drop 6V 1A)	50mΩ max.
UL/ C-UL Rating	10A / 250VAC
Resistive Load (cos Ø = 1)	10A / 30VDC
Inductive Load (cos Ø = 0.75 ~ 0.8)	3A / 250VAC
Contact Material	silver alloy

CHARACTERISTICS

Electrical Life (at 30cpm)	1 x 10 ⁵
Mechanical Life (at 120cpm)	1 x 10 ⁷
Initial Insulation Resistance	100MΩ Min. (500VDC)
Operate Time	15ms max.
Release Time	5ms max.
Initial Breakdown Voltage	50/60Hz 900VAC 1 min. (between open contacts) 50/60Hz 4000VAC 1 min. (between coil & contact)
Vibration Resistance	Functional: 10 to 55Hz at double Amplitude of 1.5mm Destructive: 10 to 55Hz at double Amplitude of 1.5mm
Shock Resistance	Functional: Min. 10G Destructive: Min. 100G
Ambient Temperature	-30°C ~ +85°C
Operating Humidity	45 to 85% RH
Unit Weight	Approx. 11 g

REFERENCE DATA

LIFE CURVE



COIL TEMPERATURE RISE

