



CE (Low Voltage Directive)

2 year warranty

### Model name




# PF 1000A-360

Name of series    Nominal output power    Nominal output voltage

### Features

- CE marking (Low Voltage Directive)
- PFHC module
- Conforms to IEC 1000-3-2
- High power factor: 0.95, high efficiency: 90%
- Input: 85 ~ 265VAC
- Output: 500, 1000W
- Wide baseplate temperature: -20 ~ +85°C
- Conduction cooling
- Provided in-rush current limiting
- N+1 parallel redundant operation
- 2 year warranty

### Specifications

<b>1. Input voltage range</b>	85 ~ 265VAC (50/60Hz) PFHC range: 85 ~ 255VAC (50/60Hz)
<b>2. Output voltage/current</b>	PF500A-360/85 ~ 265VAC input: DC360V 1.4A 504W 170 ~ 265VAC input: DC360V 2.1A 756W PF1000A-360/85 ~ 265VAC input: DC360V 2.8A 1008W 170 ~ 265VAC input: DC360V 4.2A 1512W Output derating by input voltage/PF500A: 80% for 85VAC, 100% for 100 ~ 265VAC PF1000A: 85% for 85VAC, 100% for 95 ~ 265VAC
<b>3. Efficiency (typ)</b>	90% (100VAC, full load), 94% (200VAC, full load)
<b>4. Power factor</b>	0.95 (100VAC/200VAC at full load)
<b>5. In-rush current</b>	In-rush current limiting circuit: External limit resistor
<b>6. Parallel operation</b>	N+1 redundant operation. Output current balancing (PC terminal)
<b>7. Cooling</b>	Conduction cooling (Heatsink & airflow has to be chosen according to instruction manual)
<b>8. Operating ambient temperature</b>	Baseplate temperature: -20 ~ +85°C (output derating is different according to condition) Ambient temperature: above -20°C
<b>9. Withstand voltage</b>	Input/output terminal to baseplate: 3.0kVAC for 1 min.
<b>10. Safety standard</b>	Approved by UL1950  , CSA950(C-UL),  , and EN60950  (BSI)
<b>11. Functions</b>	Over voltage, Thermal protection, PFHC power on signal (ENA terminal), Inverter good signal (IOG terminal), Auxiliary power supply for external signal (AUX terminal)
<b>12. Recommended noise filter</b>	PN-F series

### Product lineup

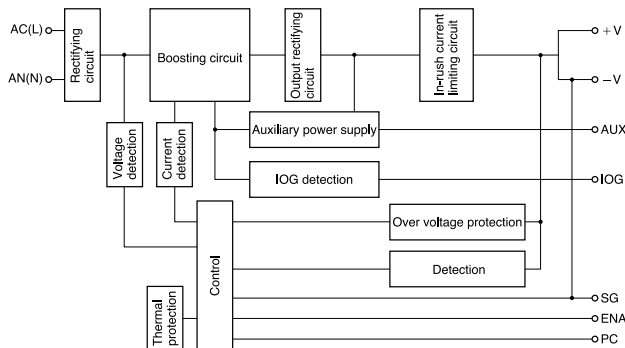
Note 1

Model	Nominal voltage range	Input voltage range	PFHC operation input voltage range	Input current (typ)	Nominal output voltage	Max. output current	Max. output power	UL	CSA	EN
PF500A-360	100 ~ 240VAC	85 ~ 265VAC (47 ~ 63Hz)	85 ~ 255VAC (47 ~ 63Hz)	5.6A	360VDC	1.4A	504W	○	○	○
	200 ~ 240VAC	170 ~ 265VAC (47 ~ 63Hz)	170 ~ 255VAC (47 ~ 63Hz)	4.0A	360VDC	2.1A	756W	○	○	○
PF1000A-360	100 ~ 240VAC	85 ~ 265VAC (47 ~ 63Hz)	85 ~ 225VAC (47 ~ 63Hz)	11.2A	360VDC	2.8A	1008W	○	○	○
	200 ~ 240VAC	170 ~ 265VAC (47 ~ 63Hz)	170 ~ 255VAC (47 ~ 63Hz)	8.0A	360VDC	4.2A	1512W	○	○	○

- Request customer specification for further details of specifications, outline, characteristics, etc. Read the instruction manual before usage.
- Contact us about delivery before ordering.

○ : Safety standard approved

### Block diagram



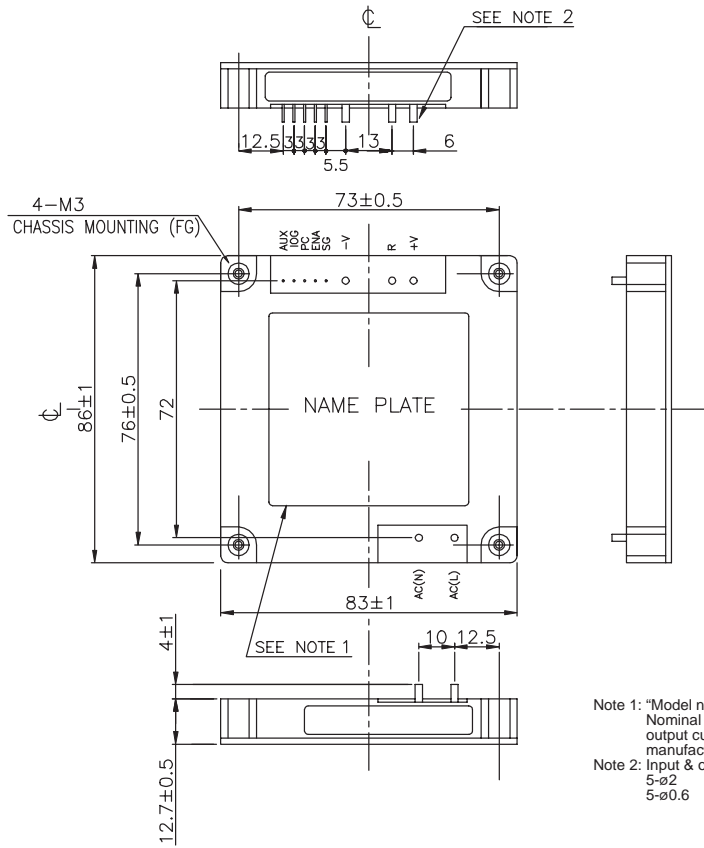
Note 1: Standard for input 100/200VAC and max. output power.

Note : The above specified value is on condition with external components attached. Filtering capacitor and in-rush current limiting resistor are required as external components. Attach an external fuse at input line.

# PF-A-SERIES

## PF500A-360

Power Module

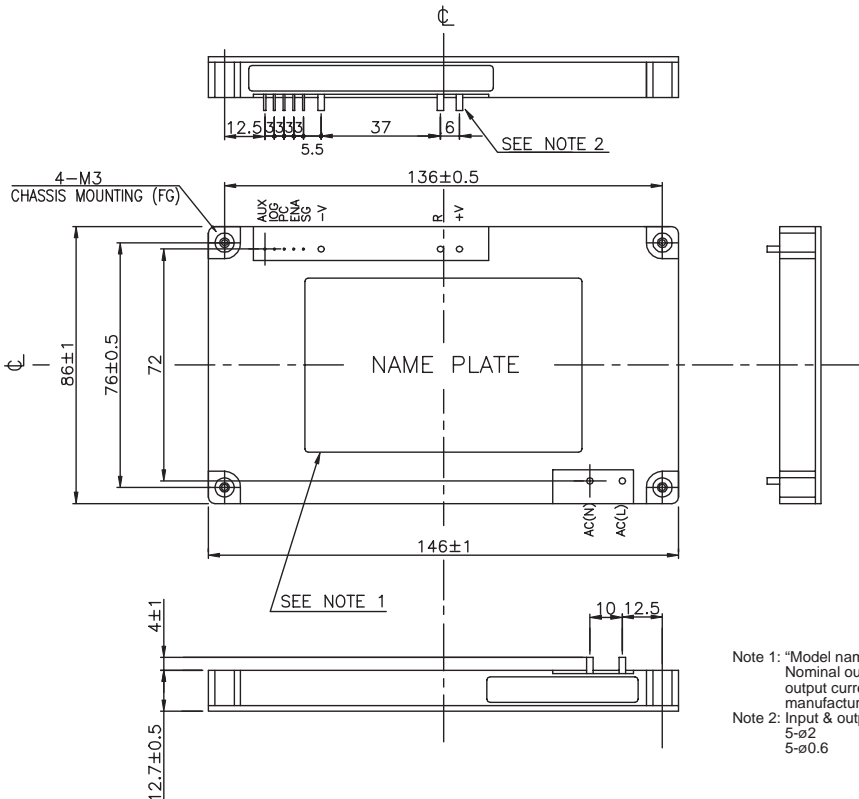


Note 1: \*Model name, Input voltage range, Nominal output voltage, Maximum output current and country of manufacture are shown here.

Note 2: Input & output terminal  
5- $\phi$ 2  
5- $\phi$ 0.6

(Unit: mm)

## PF1000A-360



Note 1: \*Model name, Input voltage range, Nominal output voltage, Maximum output current and country of manufacture are shown here.

Note 2: Input & output terminal  
5- $\phi$ 2  
5- $\phi$ 0.6

(Unit: mm)