

DS90C402

Dual Low Voltage Differential Signaling (LVDS) Receiver

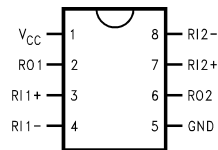
General Description

The DS90C402 is a dual receiver device optimized for high data rate and low power applications. This device along with the DS90C401 provides a pair chip solution for a dual high speed point-to-point interface. The device is in a PCB space saving 8 lead small outline package. The receiver offers ± 100 mV threshold sensitivity, in addition to common-mode noise protection.

Features

- Ultra Low Power Dissipation
- Operates above 155.5 Mbps
- Standard TIA/EIA-644
- 8 Lead SOIC Package saves PCB space
- $V_{CM} \pm 1V$ center around 1.2V
- ± 100 mV Receiver Sensitivity

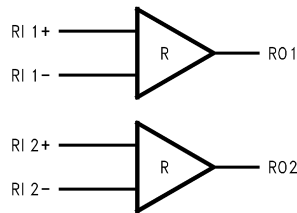
Connection Diagram



10000601

Order Number DS90C402M
See NS Package Number M08A

Functional Diagram



10000602

Absolute Maximum Ratings (Note 1)

If Military/Aerospace specified devices are required, please contact the National Semiconductor Sales Office/Distributors for availability and specifications.

| | |
|---|------------------------------|
| Supply Voltage (V_{CC}) | -0.3V to +6V |
| Input Voltage (R_{IN+} , R_{IN-}) | -0.3V to ($V_{CC} + 0.3V$) |
| Output Voltage (R_{OUT}) | -0.3V to ($V_{CC} + 0.3V$) |
| Maximum Package Power Dissipation @ +25°C | |
| M Package | 1025 mW |
| Derate M Package | 8.2 mW/°C above +25°C |
| Storage Temperature Range | -65°C to +150°C |
| Lead Temperature Range | |
| Soldering (4 sec.) | +260°C |

| | |
|--------------------------------|---------------|
| Maximum Junction Temperature | +150°C |
| ESD Rating (Note 4) | |
| (HBM, 1.5 k Ω , 100 pF) | $\geq 3,500V$ |
| (EIAJ, 0 Ω , 200 pF) | $\geq 250V$ |

Recommended Operating Conditions

| | Min | Typ | Max | Units |
|--|------|------|------|-------|
| Supply Voltage (V_{CC}) | +4.5 | +5.0 | +5.5 | V |
| Receiver Input Voltage | GND | | 2.4 | V |
| Operating Free Air Temperature (T_A) | -40 | +25 | +85 | °C |

Electrical Characteristics

Over Supply Voltage and Operating Temperature ranges, unless otherwise specified. (Note 2)

| Symbol | Parameter | Conditions | Pin | Min | Typ | Max | Units | |
|----------|-----------------------------------|---|-----------------|------|------|---------|-------|---------|
| V_{TH} | Differential Input High Threshold | $V_{CM} = +1.2V$ | R_{IN+} | | | +100 | mV | |
| V_{TL} | Differential Input Low Threshold | | R_{IN-} | -100 | | | mV | |
| I_{IN} | Input Current | $V_{IN} = +2.4V$ $V_{IN} = 0V$ | $V_{CC} = 5.5V$ | | -10 | ± 1 | +10 | μA |
| | | | | | -10 | ± 1 | +10 | μA |
| V_{OH} | Output High Voltage | $I_{OH} = -0.4 mA$, $V_{ID} = +200 mV$ | R_{OUT} | | 3.8 | 4.9 | | V |
| | | | | | 3.8 | 4.9 | | V |
| | | | | | 3.8 | 4.9 | | V |
| | | | | | | 4.9 | | V |
| V_{OL} | Output Low Voltage | $I_{OL} = 2 mA$, $V_{ID} = -200 mV$ | | | 0.07 | 0.3 | V | |
| I_{OS} | Output Short Circuit Current | $V_{OUT} = 0V$ (Note 8) | | -15 | -60 | -100 | mA | |
| I_{CC} | No Load Supply Current | Inputs Open | V_{CC} | | 3.5 | 10 | mA | |

Switching Characteristics

$V_{CC} = +5.0V \pm 10\%$, $T_A = -40^\circ C$ to $+85^\circ C$ (Notes 3, 4, 5, 6, 9)

| Symbol | Parameter | Conditions | Min | Typ | Max | Units | |
|------------|--|--|-----|------|-----|-------|----|
| t_{PHLD} | Differential Propagation Delay High to Low | $C_L = 5 pF$, $V_{ID} = 200 mV$ (Figure 1 and Figure 2) | 1.0 | 3.40 | 6.0 | ns | |
| t_{PLHD} | Differential Propagation Delay Low to High | | 1.0 | 3.48 | 6.0 | ns | |
| t_{SKD} | Differential Skew $ t_{PHLD} - t_{PLHD} $ | | 0 | 0.08 | 1.2 | ns | |
| t_{SK1} | Channel-to-Channel Skew (Note 5) | | 0 | 0.6 | 1.5 | ns | |
| t_{SK2} | Chip to Chip Skew (Note 6) | | | | 5.0 | ns | |
| t_{TLH} | Rise Time | | | | 0.5 | 2.5 | ns |
| t_{THL} | Fall Time | | | | 0.5 | 2.5 | ns |

Parameter Measurement Information

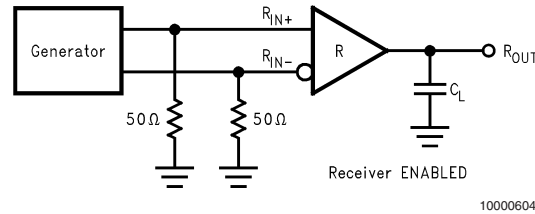


FIGURE 1. Receiver Propagation Delay and Transition Time Test Circuit

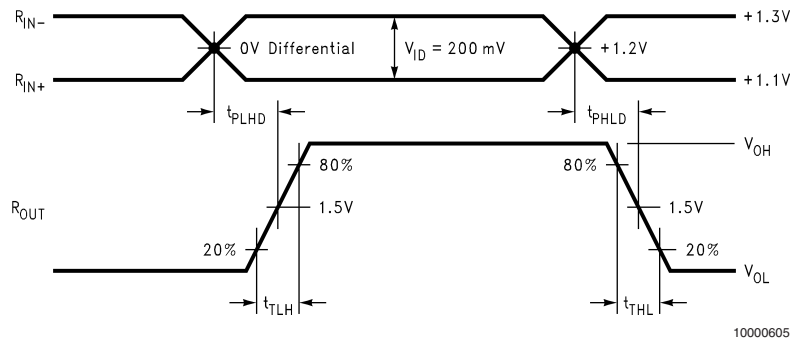


FIGURE 2. Receiver Propagation Delay and Transition Time Waveforms

Typical Application

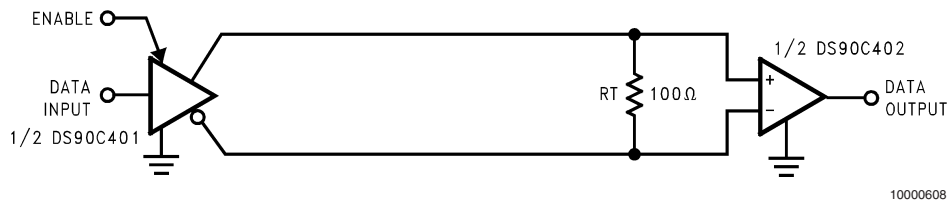


FIGURE 3. Point-to-Point Application

Applications Information

LVDS drivers and receivers are intended to be primarily used in an uncomplicated point-to-point configuration as is shown in *Figure 3*. This configuration provides a clean signaling environment for the quick edge rates of the drivers. The receiver is connected to the driver through a balanced media which may be a standard twisted pair cable, a parallel pair cable, or simply PCB traces. Typically the characteristic impedance of the media is in the range of 100Ω. A termination resistor of 100Ω should be selected to match the media, and is located as close to the receiver input pins as possible. The termination resistor converts the current sourced by the driver into a voltage that is detected by the receiver. Other configurations are possible such as a multi-receiver configuration, but the effects of a mid-stream connector(s), cable stub(s), and other impedance discontinuities as well as ground shifting, noise margin limits, and total termination loading must be taken into account.

The DS90C402 differential line receiver is capable of detecting signals as low as 100 mV, over a ±1V common-mode range centered around +1.2V. This is related to the driver

offset voltage which is typically +1.2V. The driven signal is centered around this voltage and may shift ±1V around this center point. The ±1V shifting may be the result of a ground potential difference between the driver's ground reference and the receiver's ground reference, the common-mode effects of coupled noise, or a combination of the two. Both receiver input pins should honor their specified operating input voltage range of 0V to +2.4V (measured from each pin to ground), exceeding these limits may turn on the ESD protection circuitry which will clamp the bus voltages.

Fail-Safe Feature:

The LVDS receiver is a high gain, high speed device that amplifies a small differential signal (20mV) to CMOS logic levels. Due to the high gain and tight threshold of the receiver, care should be taken to prevent noise from appearing as a valid signal.

The receiver's internal fail-safe circuitry is designed to source/sink a small amount of current, providing fail-safe protection (a stable known state HIGH output voltage) for floating, terminated or shorted receiver inputs.

Applications Information (Continued)

- Open Input Pins.** The DS90C402 is a dual receiver device, and if an application requires only one receiver, the unused channel(s) inputs should be left OPEN. Do not tie unused receiver inputs to ground or any other voltages. The input is biased by internal high value pull up and pull down resistors to set the output to a HIGH state. This internal circuitry will guarantee a HIGH, stable output state for open inputs.
- Terminated Input.** If the driver is disconnected (cable unplugged), or if the driver is in a power-off condition, the receiver output will again be in a HIGH state, even with the end of cable 100Ω termination resistor across the input pins. The unplugged cable can become a floating antenna which can pick up noise. If the cable picks up more than 10mV of differential noise, the receiver may see the noise as a valid signal and switch. To insure that any noise is seen as common-mode and not differential, a balanced interconnect should be used. Twisted pair cable will offer better balance than flat ribbon cable
- Shorted Inputs.** If a fault condition occurs that shorts the receiver inputs together, thus resulting in a 0V differ-

ential input voltage, the receiver output will remain in a HIGH state. Shorted input fail-safe is not supported across the common-mode range of the device (GND to 2.4V). It is only supported with inputs shorted and no external common-mode voltage applied.

Pin Descriptions

| Pin No. | Name | Description |
|---------|------------------|--------------------------------------|
| 2, 6 | R _{OUT} | Receiver output pin |
| 3, 7 | R _{IN+} | Positive receiver input pin |
| 4, 8 | R _{IN-} | Negative receiver input pin |
| 5 | GND | Ground pin |
| 1 | V _{CC} | Positive power supply pin, +5V ± 10% |

Ordering Information

| Operating Temperature | Package Type/ Number | Order Number |
|-----------------------|----------------------|--------------|
| -40°C to +85°C | SOP/M08A | DS90C402M |

RECEIVE MODE

| R _{IN+} - R _{IN-} | R _{OUT} |
|-------------------------------------|------------------|
| > +100 mV | H |
| < -100 mV | L |
| 100 mV > & > -100 mV | X |

H = Logic High Level
L = Logic Low level
X = Indeterminant State

Note 1: "Absolute Maximum Ratings" are those values beyond which the safety of the device cannot be guaranteed. They are not meant to imply that the devices should be operated at these limits. The table of "Electrical Characteristics" specifies conditions of device operation.

Note 2: Current into device pins is defined as positive. Current out of device pins is defined as negative. All voltages are referenced to ground unless otherwise specified.

Note 3: All typicals are given for: V_{CC} = +5.0V, T_A = +25°C.

Note 4: Generator waveform for all tests unless otherwise specified: f = 1 MHz, Z_O = 50Ω, t_r and t_f (0%–100%) ≤ 1 ns for R_{IN-}.

Note 5: Channel-to-Channel Skew is defined as the difference between the propagation delay of one channel and that of the others on the same chip with an event on the inputs.

Note 6: Chip to Chip Skew is defined as the difference between the minimum and maximum specified differential propagation delays.

Note 7: ESD Rating:

HBM (1.5 kΩ, 100 pF) ≥ 3,500V

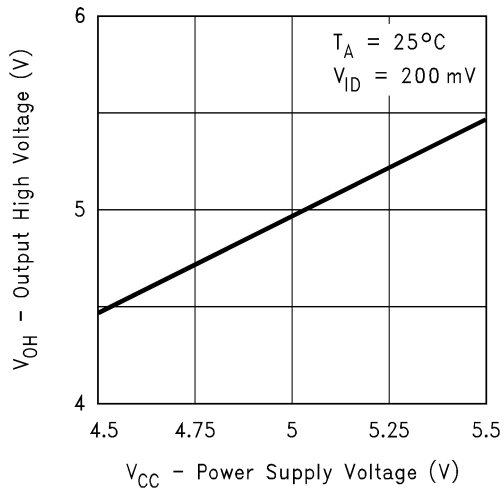
EIAJ (0Ω, 200 pF) ≥ 250V

Note 8: Output short circuit current (I_{OS}) is specified as magnitude only, minus sign indicates direction only. Only one output should be shorted at a time, do not exceed maximum junction temperature specification.

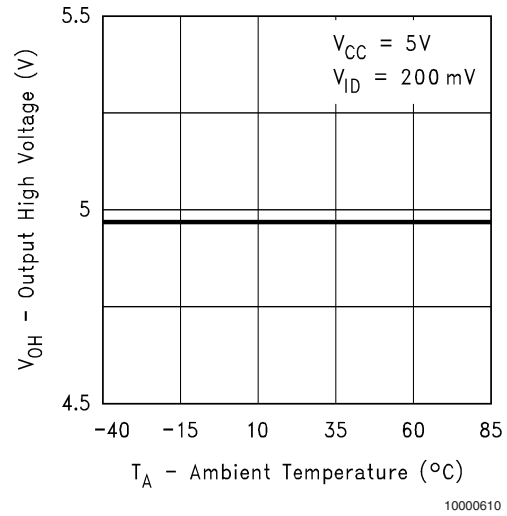
Note 9: C_L includes probe and jig capacitance.

Typical Performance Characteristics

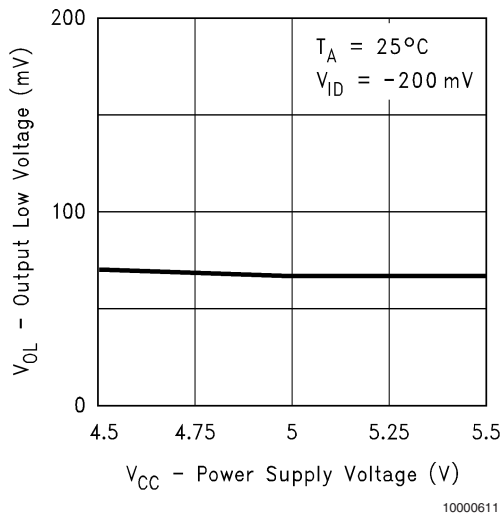
Output High Voltage vs
Power Supply Voltage



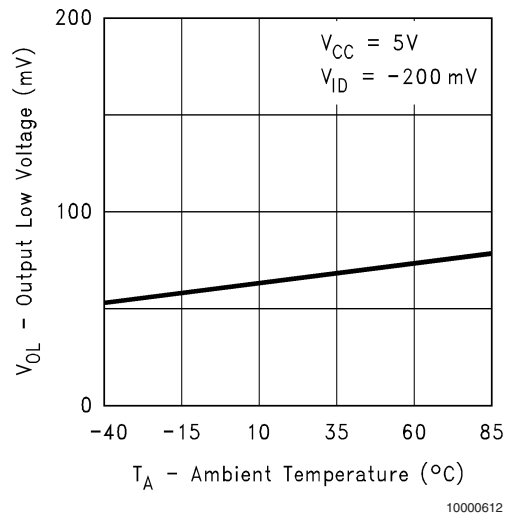
Output High Voltage vs
Ambient Temperature



Output Low Voltage vs
Power Supply Voltage

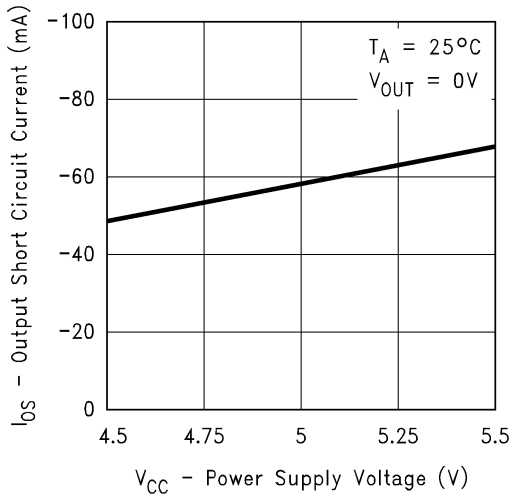


Output Low Voltage vs
Ambient Temperature



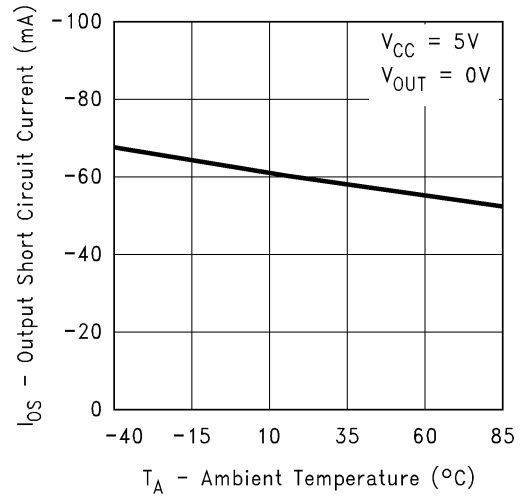
Typical Performance Characteristics (Continued)

Output Short Circuit Current vs Power Supply Voltage



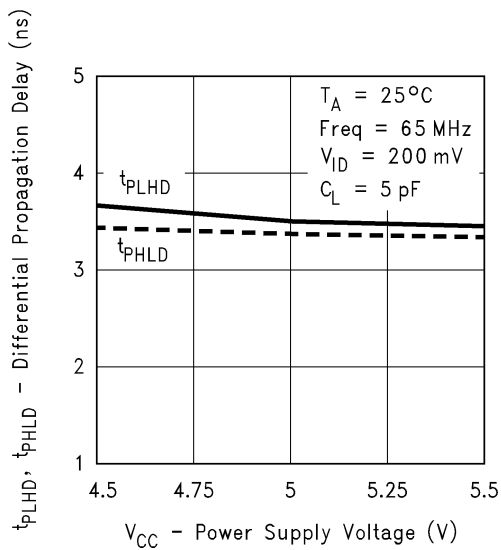
10000613

Output Short Circuit Current vs Ambient Temperature



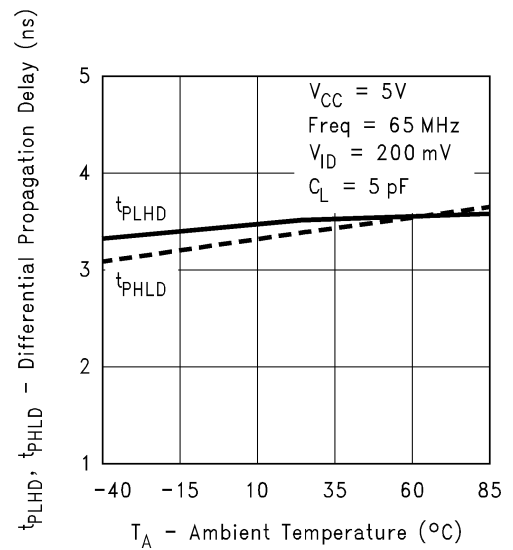
10000614

Differential Propagation Delay vs Power Supply Voltage



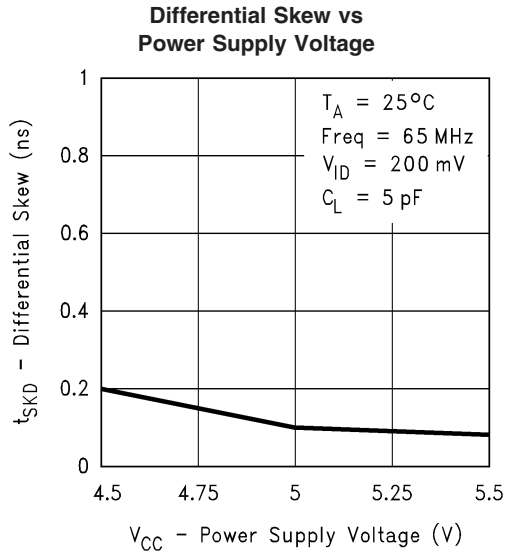
10000615

Differential Propagation Delay vs Ambient Temperature

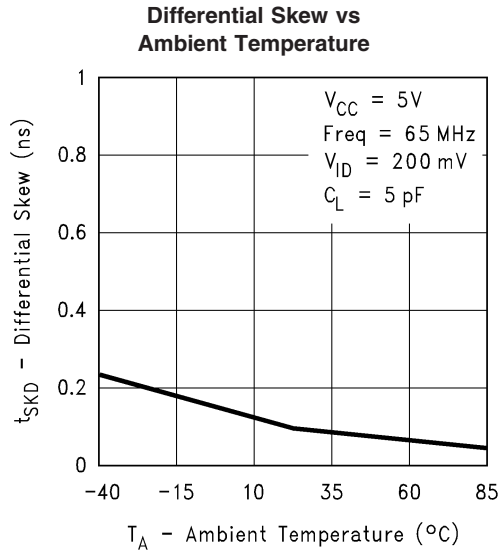


10000616

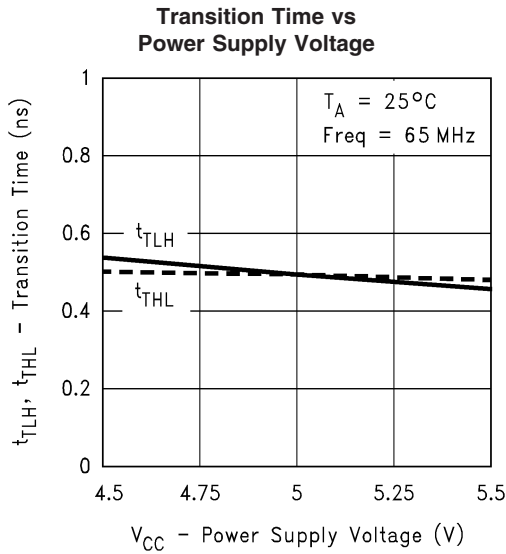
Typical Performance Characteristics (Continued)



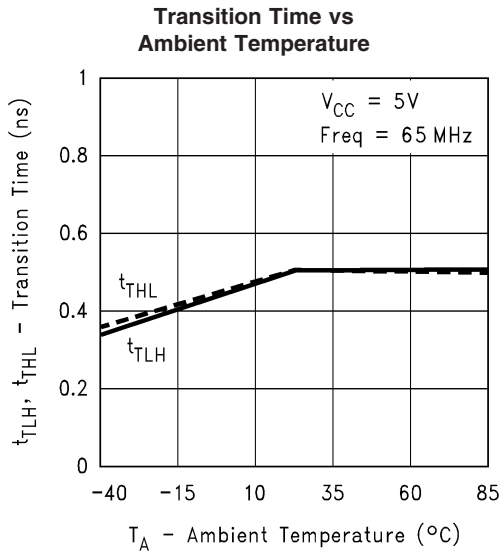
10000617



10000618

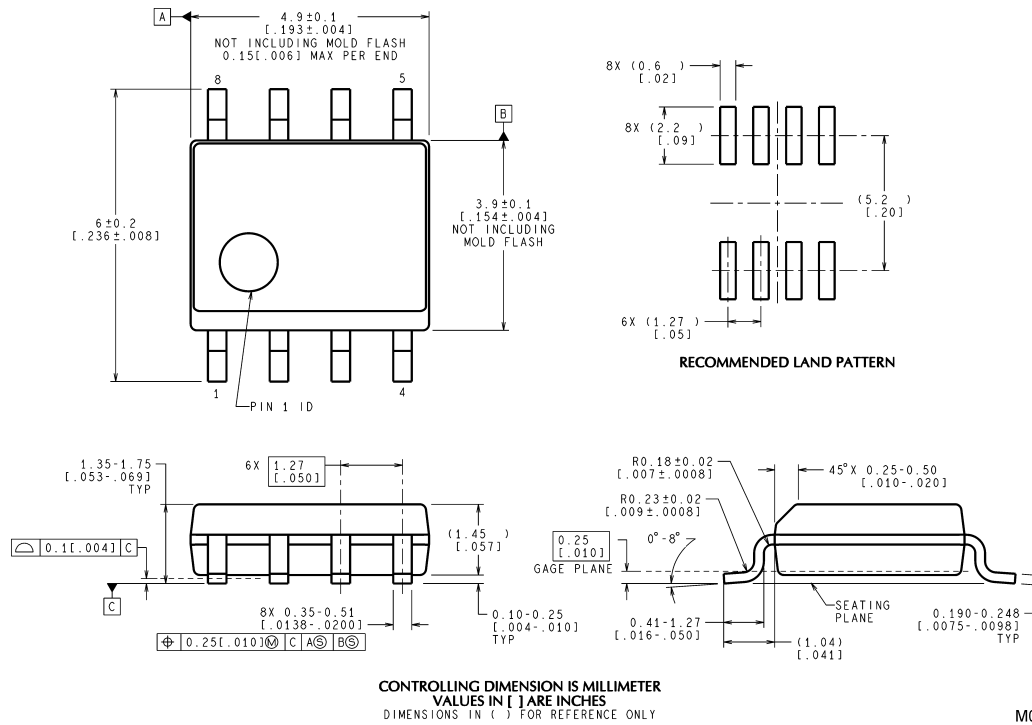


10000619



10000620

Physical Dimensions inches (millimeters) unless otherwise noted



8-Lead (0.150" Wide) Molded Small Outline Package, JEDEC
Order Number DS90C402M
NS Package Number M08A

M08A (Rev K)

National does not assume any responsibility for use of any circuitry described, no circuit patent licenses are implied and National reserves the right at any time without notice to change said circuitry and specifications.

For the most current product information visit us at www.national.com.

LIFE SUPPORT POLICY

NATIONAL'S PRODUCTS ARE NOT AUTHORIZED FOR USE AS CRITICAL COMPONENTS IN LIFE SUPPORT DEVICES OR SYSTEMS WITHOUT THE EXPRESS WRITTEN APPROVAL OF THE PRESIDENT AND GENERAL COUNSEL OF NATIONAL SEMICONDUCTOR CORPORATION. As used herein:

- Life support devices or systems are devices or systems which, (a) are intended for surgical implant into the body, or (b) support or sustain life, and whose failure to perform when properly used in accordance with instructions for use provided in the labeling, can be reasonably expected to result in a significant injury to the user.
- A critical component is any component of a life support device or system whose failure to perform can be reasonably expected to cause the failure of the life support device or system, or to affect its safety or effectiveness.

BANNED SUBSTANCE COMPLIANCE

National Semiconductor manufactures products and uses packing materials that meet the provisions of the Customer Products Stewardship Specification (CSP-9-111C2) and the Banned Substances and Materials of Interest Specification (CSP-9-111S2) and contain no "Banned Substances" as defined in CSP-9-111S2.

Leadfree products are RoHS compliant.



National Semiconductor
Americas Customer
Support Center
 Email: new.feedback@nsc.com
 Tel: 1-800-272-9959

National Semiconductor
Europe Customer Support Center
 Fax: +49 (0) 180-530 85 86
 Email: europa.support@nsc.com
 Deutsch Tel: +49 (0) 69 9508 6208
 English Tel: +44 (0) 870 24 0 2171
 Français Tel: +33 (0) 1 41 91 8790

National Semiconductor
Asia Pacific Customer
Support Center
 Email: ap.support@nsc.com

National Semiconductor
Japan Customer Support Center
 Fax: 81-3-5639-7507
 Email: jpn.feedback@nsc.com
 Tel: 81-3-5639-7560

www.national.com