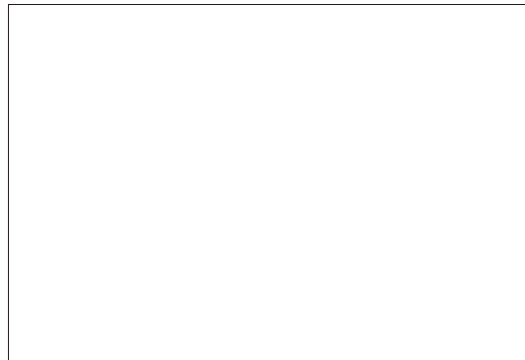


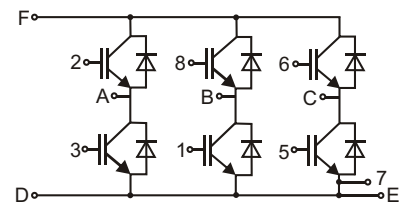
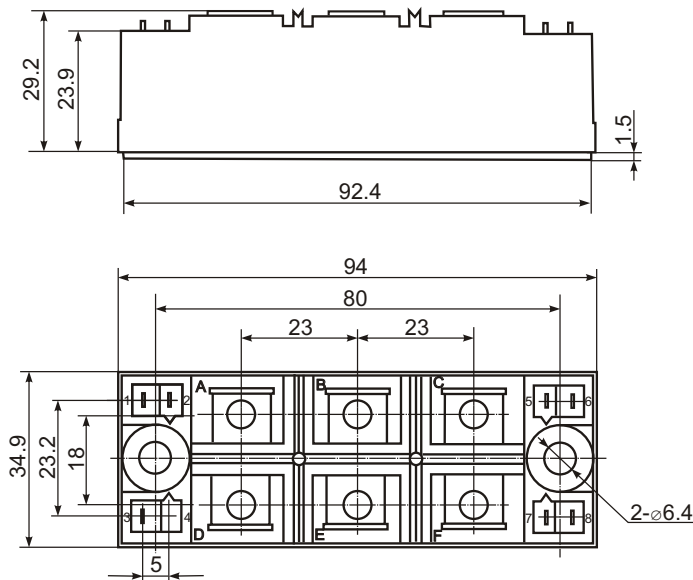
# SMPS6-40-12



## 6-pack IGBT Module



Type	$V_{CES}$	$I_C$	$I_{CM}$	$V_{CE(sat)}$	$t_{d(on)}$	$t_{d(off)}$	$t_f$	$T_{J\ max}$	$V_{isol}$	$R_{thJC}$
	V	A	A	V	ns	ns	ns	°C	V	K/W
SMPS6-40-12	1200	40	80	1.8	55	420	70	150	2500	0.60



### Features:

- Industrial standard package
- Heat transfer through aluminium nitride ceramic isolated metal baseplate
- Precise internal pressure contacts for high reliability
- 2500V RMS isolation voltage

### Typical Applications:

- DC motor control
- AC motor soft starter
- Temperature control (e.g. for ovens, chemical processes)
- Lighting control

**SEMPO Electronic Limited**

**www.sempoel.com**