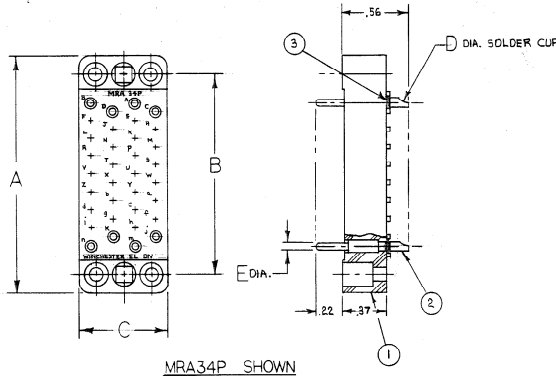


CATALOG NUMBER	A	B	C	D	E
MRA3P	1.31	1.000	.38	.070	.062
MRA14P	1.25	.937	.44	.070	.062
MRA20P	1.56	1.250	.44	.070	.062
MRA34P	2.00	1.688	.75	.070	.062
MRA41P	2.62	2.312	.44	.070	.062
MRA42P	2.31	2.000	.75	.070	.062
MRA50P	2.59	2.282	.75	.070	.062
MRA50-8P	2.28	1.969	1.13	.070	.041794
MRA66P	2.25	1.969	1.13	.070	.062
MRA75P	2.59	2.282	1.11	.070	.062
MRA104P	2.75	2.375	1.53	.070	.062

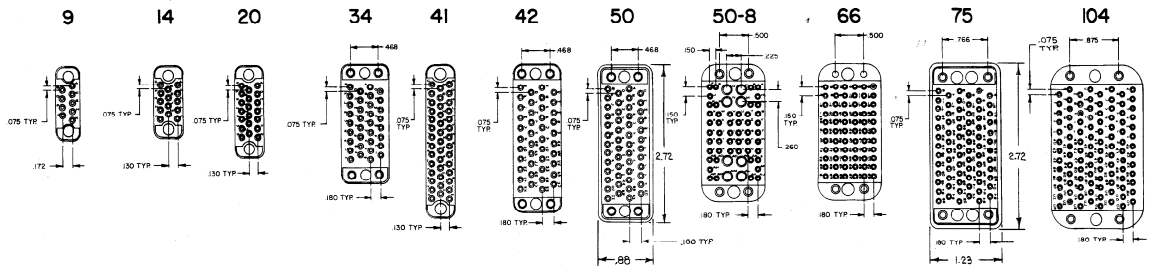


MRA34P SHOWN

- ① MOLDING, MALE - DIALLYL PHTHALATE, TYPE MDG, MIL-M-14F, MIL-P-4369 (SIZES 50-BAND GG: DIALLYL PHTHALATE PER MIL-M-14, TYPE SDG-F)
- ② CONTACT PIN - BRASS PER QQ-B-626; GOLD OVER COPPER.
- ③ CLIP SPRING - PHOSPHOR BRONZE PER QQ-B-750; GOLD OVER COPPER.

FACES OF THE "MRA" MOLDINGS

19374 B



TOLERANCE UNLESS OTHERWISE SPECIFIED .25 .02 .03 .007 ANGULAR .5

3-27-78	3-28-80
REVISED	REVISED
BY: [Signature]	BY: [Signature]
DATE: 3-27-78	DATE: 3-28-80
BY: [Signature]	BY: [Signature]
DATE: 3-27-78	DATE: 3-28-80

TITLE			
COMPOSITE OUTLINE ASS'Y.			
MRA**P			
SCALE	BY	DATE	CHK'D
2:1	5 A	4-3-82	P. GATT
WINCHESTER ELECTRONICS			
CHeshire, Conn.			
DWG	NO.	REV.	
C	19374	B	