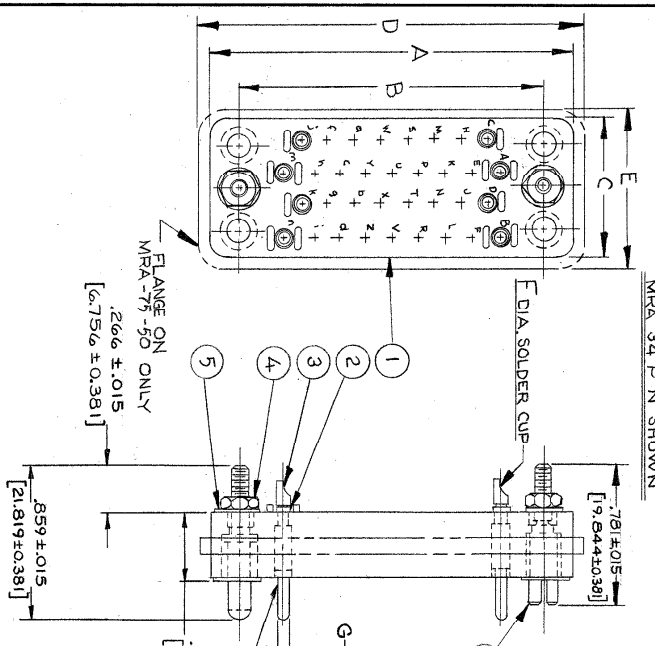


This drawing, the design and ideas embodied in the device to which it relates, and the manner of producing the device, are the property of Winchester Electronics, Incorporated and shall not be employed, copied, or disclosed to anyone, in any manner without the consent of Winchester Electronics, Incorporated.

| REV | CHANGE                                   | DATE |
|-----|--|------|
| C   | REDRAWN AND REVISED S.O.B. 0887 EN-17013 |      |

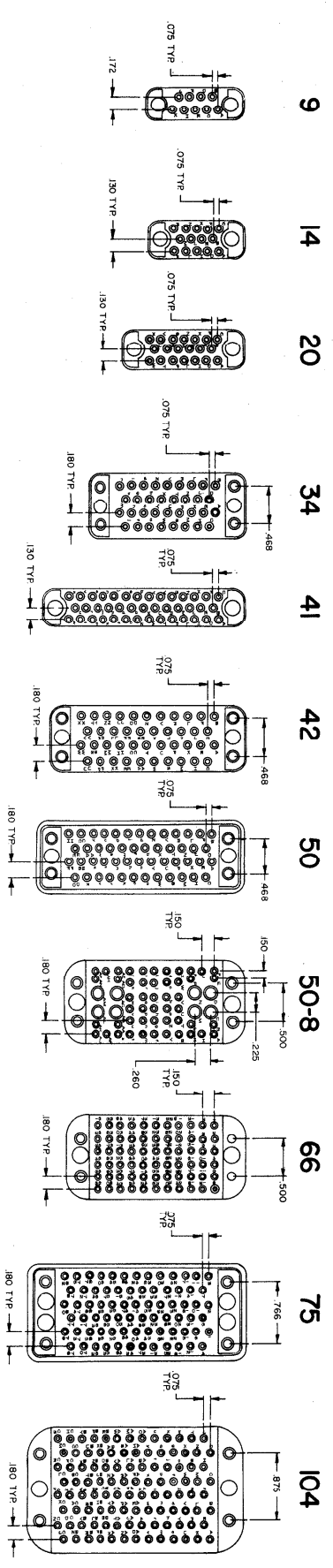


- ① MOLDING MALE - DIALLYL PHthalATE TYPE M05, MIL-M-147, MIL-P-4389
- ② CLIP SPRING - PHOS BRONZE QQ-P-750 GOLD OVER COPPER
- ③ CONTACT PIN - BRASS QQ-B-626 GOLD OVER COPPER
- ④ NUT HEX - BRASS QQ-B-626 GOLD OVER COPPER
- ⑤ LOCKWASHER - PHOS BRONZE QQ-B-750 GOLD OVER COPPER
- ⑥ GOLD PIN - BRASS QQ-B-626 GOLD OVER COPPER
- ⑦ GUIDE SOCKET - BRASS QQ-B-626 GOLD OVER COPPER

NOTES:  
1. DIMENSIONS SHOWN IN BRACKETS [ ] ARE IN MILLIMETERS, AND ARE FOR REFERENCE ONLY.

### FACES OF THE "MRA" MOLDINGS

MALE CONTACTS NO. 9 THRU 104



| WINCHESTER EL INC. CATALOG NO. | A     | B     | C     | D     | E     | F    | G    |
|--------------------------------|-------|-------|-------|-------|-------|------|------|
| MRA 9 P N                      | 1.312 | 1.000 | .375  |       |       | .070 | .062 |
| MRA 14 P N                     | 1.250 | .937  | .438  |       |       | .070 | .062 |
| MRA 20 P N                     | 1.562 | 1.250 | .438  |       |       | .070 | .062 |
| MRA 34 P N                     | 2.000 | 1.688 | .750  |       |       | .070 | .062 |
| MRA 41 P N                     | 2.625 | 2.312 | 1.438 |       |       | .070 | .062 |
| MRA 42 P N                     | 2.312 | 2.000 | .750  |       |       | .070 | .062 |
| MRA 50 P N                     | 2.594 | 2.282 | 1.750 | 2.719 | .875  | .070 | .062 |
| MRA 50-B P N                   | 2.281 | 1.969 | 1.125 |       |       | .070 | .062 |
| MRA 66 P N                     | 2.281 | 1.969 | 1.125 |       |       | .070 | .062 |
| MRA 75 P N                     | 2.594 | 2.282 | 1.109 | 2.719 | 2.234 | .070 | .062 |
| MRA 104 P N                    | 2.750 | 2.375 | 1.531 |       |       | .070 | .062 |

TOLERANCE UNLESS OTHERWISE SPECIFIED FRACTIONS X DECIMALS = .007 ANGLE 1/2

TITLE COMPOSITE OUTLINE ASSY  
MATERIAL MRA # \* P N

|          |                              |               |                        |
|----------|------------------------------|---------------|------------------------|
| FINISH   | SCALE 2:1                    |               |                        |
| MATERIAL | DESIGNED BY S. AMERICAN      | DATE 12-23-60 | DRAWN BY J. W. HILGERS |
|          | WINCHESTER ELECTRONICS, INC. | 10-19-60      | 12-23-60               |
|          | NORWALK, CONN.               |               |                        |
| DWG. NO. | C 18859                      |               |                        |
| REV.     | C                            |               |                        |

18859 C