



Siemens Matsushita Components

SAW Components
Low Loss Filter for Mobile Communication

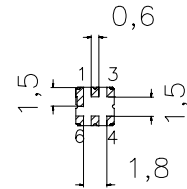
B4122
836,5 MHz

Data Sheet

Ceramic package **DCC6C**

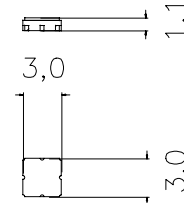
Features

- Low-loss RF filter for AMPS mobile telephone system, transmit path
- Low amplitude ripple
- Usable passband 25 MHz
- Ceramic package for **Surface Mounted Technology (SMT)**



Terminals

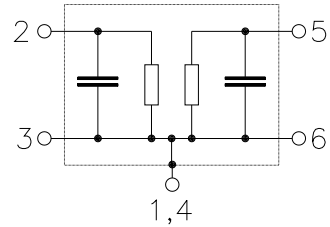
- Ni, gold-plated



Dimensions in mm, approx. weight 0,04 g

Pin configuration

- 2 Input
- 3 Ground
- 5 Output
- 6 Ground
- 1, 4 Case ground



Type	Ordering code	Marking and Package according to	Packing according to
B4122	B39841-B4122-U410	C61157-A7-A67	F61074-V8088-Z000

Electrostatic Sensitive Device (ESD)

Maximum ratings

Operable temperature range	T	- 30 / + 85	°C	
Storage temperature range	T_{stg}	- 40 / + 85	°C	
DC voltage	V_{DC}	3	V	
Source power	P_s	0	dBm	source impedance 50 Ω



SAW Components
Low Loss Filter for Mobile Communication

B4122
836,5 MHz

Data Sheet

Characteristics

Operating temperature range: $T = -30$ to $+85$ °C
 Terminating source impedance: $Z_S = 50 \Omega$
 Terminating load impedance: $Z_L = 50 \Omega$

		min.	typ.	max.	
Center frequency	f_C	—	836,5	—	MHz
Maximum insertion attenuation	α_{max}				
824,0 ... 849,0 MHz		—	2,6	3,0	dB
Amplitude ripple (p-p)	$\Delta\alpha$				
824,0 ... 849,0 MHz		—	1,1	1,5	dB
VSWR					
824,0 ... 849,0 MHz		—	1,92	2,0	
Attenuation	α				
0,0 ... 800,0 MHz		30,0	50,0	—	dB
869,0 ... 894,0 MHz		32,0	34,0	—	dB
894,0 ... 920,0 MHz		34,0	40,0	—	dB
920,0 ... 1210,0 MHz		40,0	55,0	—	dB
1210,0 ... 1500,0 MHz		30,0	50,0	—	dB
1500,0 ... 2000,0 MHz		25,0	50,0	—	dB
2000,0 ... 2600,0 MHz		20,0	32,0	—	dB
2600,0 ... 3000,0 MHz		15,0	28,0	—	dB

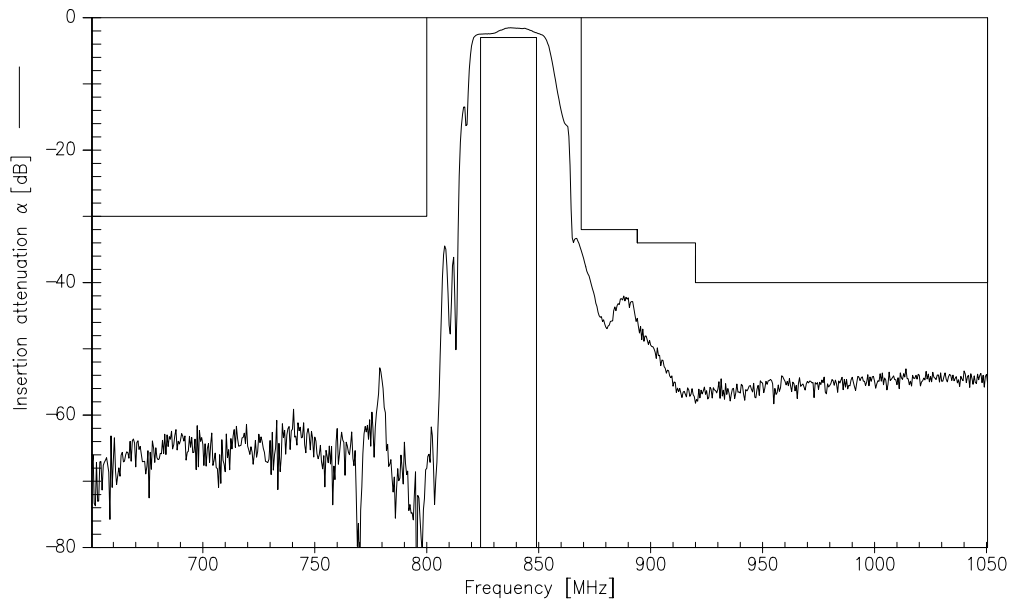


SAW Components
Low Loss Filter for Mobile Communication

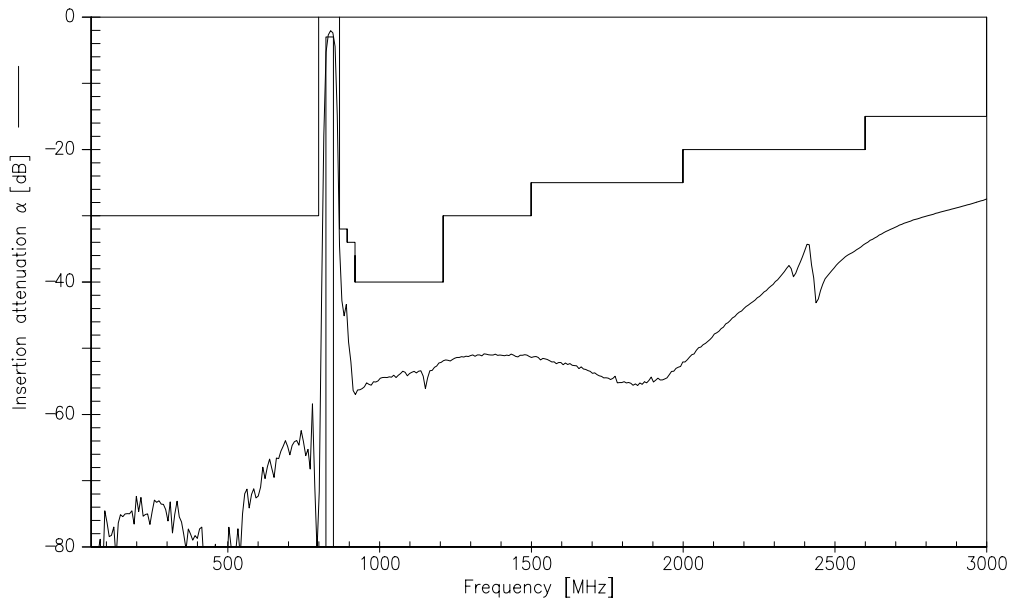
B4122
836,5 MHz

Data Sheet

Transfer function



Transfer function (wideband)





Siemens Matsushita Components

SAW Components Low Loss Filter for Mobile Communication

B4122
836,5 MHz

Data Sheet

Reflection functions

