

Voltage Variable Attenuator

824 - 960 MHz

AT65-0009

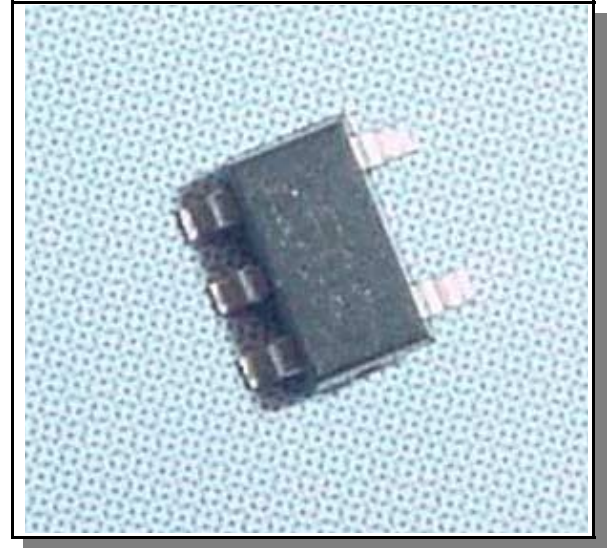
Features

- 25 dB Attenuation Range
- High IP3
- Excellent Linearity Performance
- Surface Mount SOT-25 Package
- Low Cost/High Performance
- 50 Ohm Nominal Impedance

Description

M/A-COM's AT65-0009 is an integrated voltage variable attenuator containing two PIN diodes and a passive glass quadrature hybrid. This device is packaged in a 5 leaded SOT plastic surface mount package. Maximum attenuation is typically achieved at 3.5 V bias using the suggested bias circuit. The AT65-0009 is ideally suited for GSM communication applications requiring variable attenuation in the 824 to 960 MHz bandwidth.

SOT-25



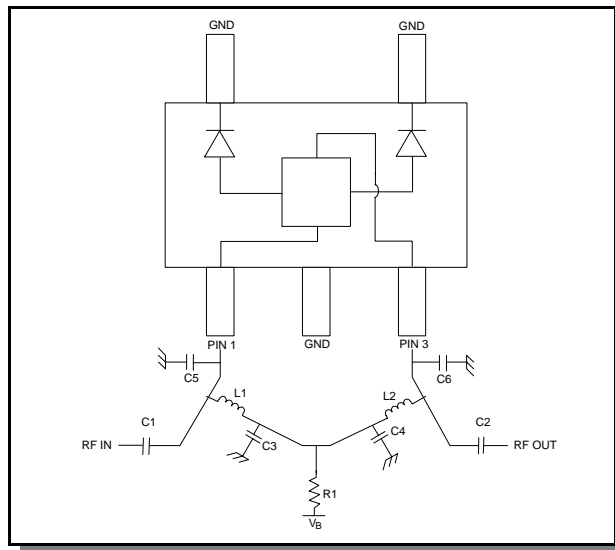
Electrical Specifications: $T_A = 25^\circ\text{C}$, $Z_0 = 50\ \text{Ohms}$, $F = 824\ \text{to}\ 960\ \text{MHz}$

Parameter	Test Conditions	Units	Min.	Typ.	Max.
Insertion Loss	$V_B = 0\ \text{V}$	dB	—	1.7	2.1
VSWR		Ratio	—	1.7	2.2
Attenuation Flatness vs. Frequency	0 - 10 dB	dB	—	1.3	—
	0 - 20 dB	dB	—	1.3	—
	0 - 30 dB	dB	—	2.5	—
Switching Speed	50% control to 90%/10% RF	μSec	—	7.0	—
Input IP3	Two Tones 900 MHz, 905 MHz, +5 dBm $V_B = 0\ \text{V}$	dBm	—	40	—
Input IP2	Two Tones 900 MHz, 905 MHz, +5 dBm $V_B = 0\ \text{V}$	dBm	—	34	—
Attenuation	$I_B = 0.30\ \text{to}\ 0.45\ \text{mA}$	dB	25	28	—

Pin Configuration

Pin #	Function
1	RFIN, V_B
2	GND
3	RFOUT, V_B
4	GND
5	GND

Functional Diagram and Bias Circuitry

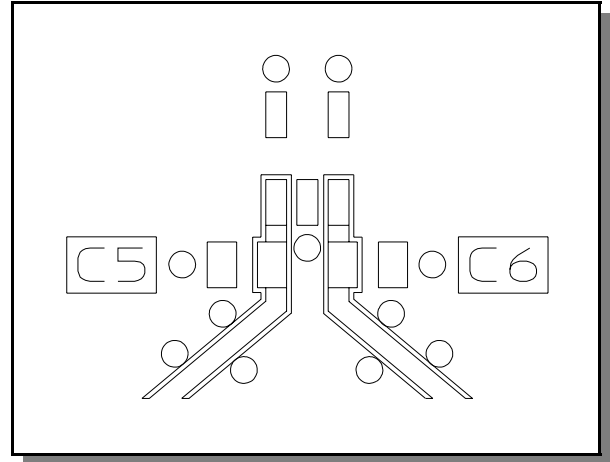


External Circuitry Parts ¹

Part	Value	Purpose
C1	390 pF	DC Block
C2	390 pF	DC Block
C3	390 pF	By-pass
C4	390 pF	By-pass
L1	180 nH	RF Choke
L2	180 nH	RF Choke
R1	10 KOhm	Current Limiting
C5 ²	1.5 pF	RF Tune
C6 ²	1.5 pF	RF Tune

- All external circuitry parts are readily available, low cost surface mount components (.060 in. x .030 in. or .080 in. x .050 in.).
- See Application Note MA-C-05010008A for external tuning capacitor values to suit specific Communication Bandwidths. Insertion Loss will vary depending on tuning capacitor value chosen.

Recommended PCB Configuration³



- Circuit Material = FR-4, TETRA II, 0.031 inches thick.
Line Width = 0.025 inches, Line Spacing = 0.0056 inches.

Absolute Maximum Ratings ⁴

Parameter	Absolute Maximum
Max Input Power	+27 dBm
Operating Voltage	+5 V
Operating Temperature	-40°C to +85°C
Storage Temperature	-65°C to +125°C

- Exceeding any one or combination of these limits may cause permanent damage to this device.

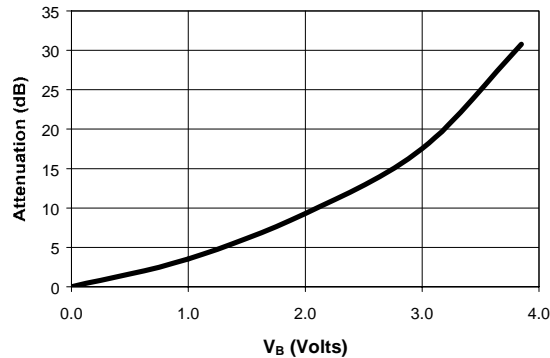
M/A-COM Inc. and its affiliates reserve the right to make changes to the product(s) or information contained herein without notice. M/A-COM makes no warranty, representation or guarantee regarding the suitability of its products for any particular purpose, nor does M/A-COM assume any liability whatsoever arising out of the use or application of any product(s) or information.

Visit www.macom.com for additional data sheets and product information.

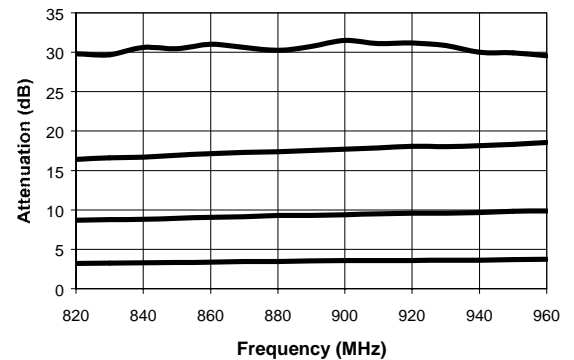
- North America: Tel. (800) 366-2266
- Asia/Pacific: Tel.+81-44-844-8296, Fax +81-44-844-8298
- Europe: Tel. +44 (1344) 869 595, Fax+44 (1344) 300 020

Typical Performance Curves

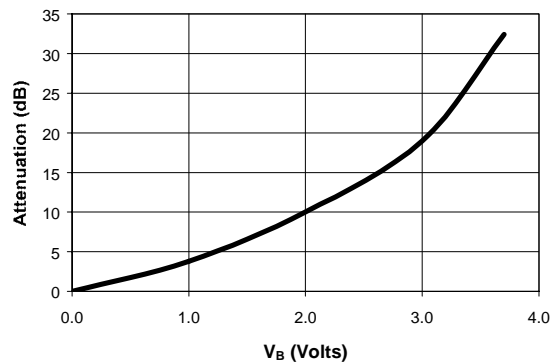
Attenuation vs. Voltage with 1.5 pF Tuning Cap @ +25°C



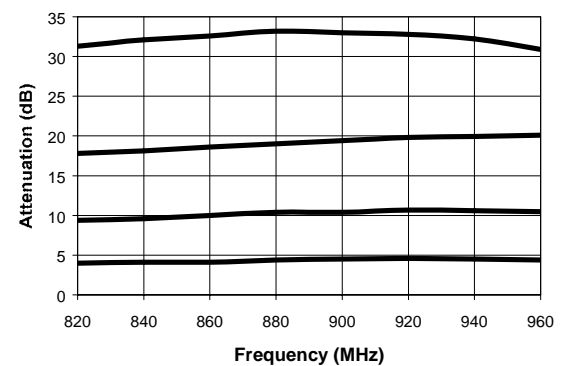
Attenuation vs. Freq. With 1.5 pF Tuning Cap @ +25°C



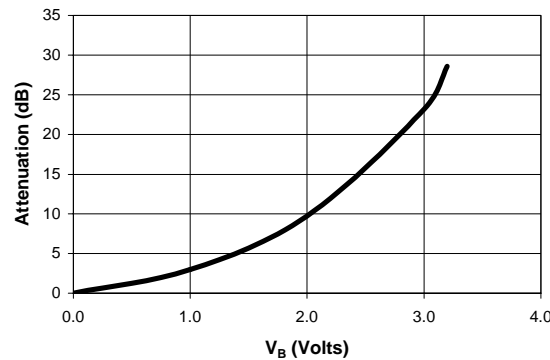
Attenuation vs. Voltage with 1.5 pF Tuning Cap @ +85°C



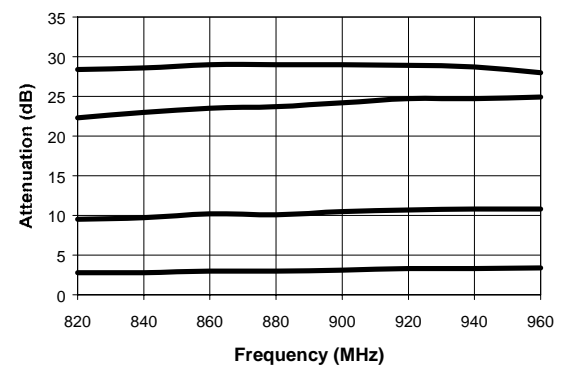
Attenuation vs. Freq. With 1.5 pF Tuning Cap @ +85°C



Attenuation vs. Voltage with 1.5 pF Tuning Cap @ -40°C



Attenuation vs. Freq. With 1.5 pF Tuning Cap @ -40°C



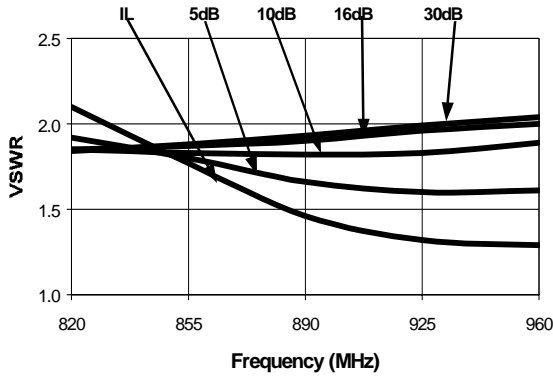
M/A-COM Inc. and its affiliates reserve the right to make changes to the product(s) or information contained herein without notice. M/A-COM makes no warranty, representation or guarantee regarding the suitability of its products for any particular purpose, nor does M/A-COM assume any liability whatsoever arising out of the use or application of any product(s) or information.

Visit www.macom.com for additional data sheets and product information.

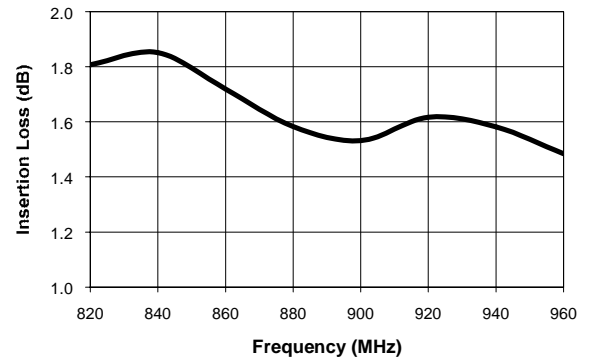
- North America: Tel. (800) 366-2266
- Asia/Pacific: Tel.+81-44-844-8296, Fax +81-44-844-8298
- Europe: Tel. +44 (1344) 869 595, Fax+44 (1344) 300 020

Typical Performance Curves

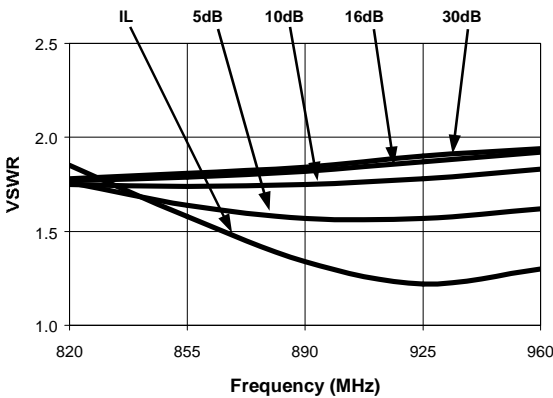
VSWR vs. Freq. With 1.5 pF Tuning Cap @ +25°C



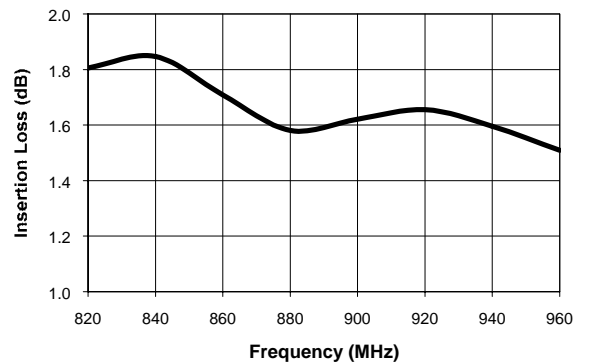
Loss vs. Frequency @ +25°C No Tuning Cap (See Note 2)



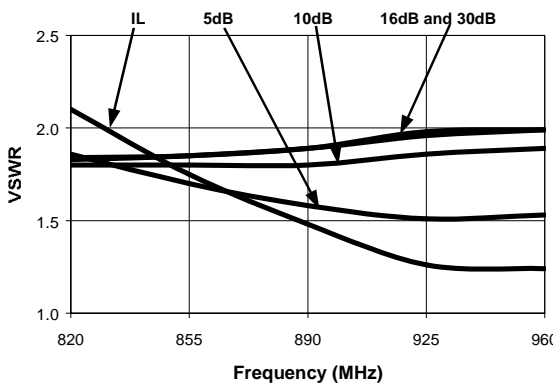
VSWR vs. Freq. With 1.5 pF Tuning Cap @ +85°C



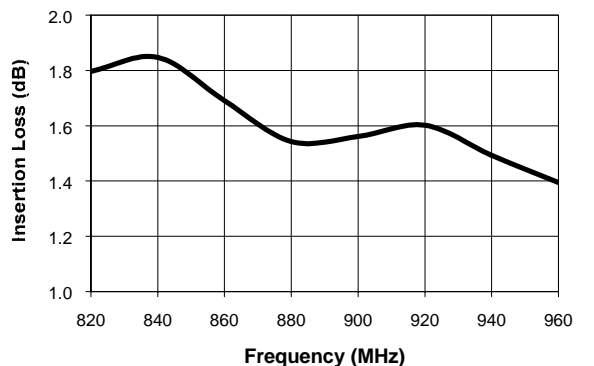
Loss vs. Frequency @ +85°C No Tuning Cap (See Note 2)



VSWR vs. Freq. With 1.5 pF Tuning Cap @ -40°C



Loss vs. Frequency @ -40°C No Tuning Cap (See Note 2)

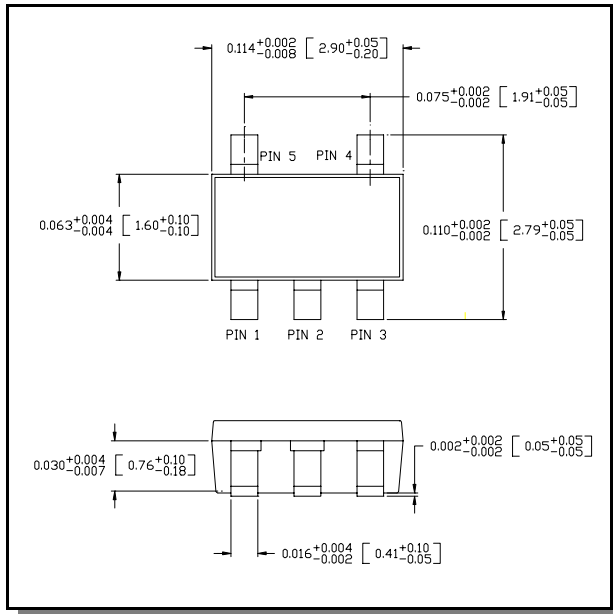


M/A-COM Inc. and its affiliates reserve the right to make changes to the product(s) or information contained herein without notice. M/A-COM makes no warranty, representation or guarantee regarding the suitability of its products for any particular purpose, nor does M/A-COM assume any liability whatsoever arising out of the use or application of any product(s) or information.

Visit www.macom.com for additional data sheets and product information.

- North America: Tel. (800) 366-2266
- Asia/Pacific: Tel.+81-44-844-8296, Fax +81-44-844-8298
- Europe: Tel. +44 (1344) 869 595, Fax+44 (1344) 300 020

SOT-25



Ordering Information

Part Number	Package
AT65-0009	Bulk Packaging
AT65-0009TR	Tape and Reel (1K Reel)
AT65-0009-TB	Units Mounted on Test Board

Note: Reference Application Note M513 for reel size information.

M/A-COM Inc. and its affiliates reserve the right to make changes to the product(s) or information contained herein without notice. M/A-COM makes no warranty, representation or guarantee regarding the suitability of its products for any particular purpose, nor does M/A-COM assume any liability whatsoever arising out of the use or application of any product(s) or information.

Visit www.macom.com for additional data sheets and product information.

- North America: Tel. (800) 366-2266
- Asia/Pacific: Tel.+81-44-844-8296, Fax +81-44-844-8298
- Europe: Tel. +44 (1344) 869 595, Fax+44 (1344) 300 020