

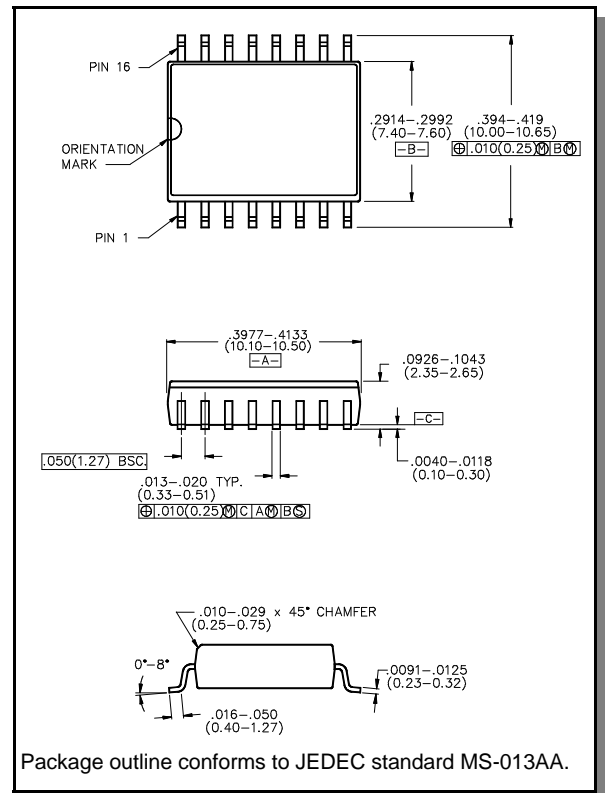
## Features

- Attenuation: 0.5 dB Steps to 15.5 dB
- Low DC Power Consumption
- Plastic SOIC, Wide Body, SMT Package
- Integral TTL Driver
- 50 ohm Impedance
- Test Boards are Available
- Tape and Reel Packaging Available

## Description

M/A-COM's AT65-0283 is a GaAs FET 5-bit digital attenuator with integral TTL driver. Step size is 0.5 dB providing a 15.5 dB total attenuation range. This device is in a SOIC-16 plastic surface mount package. The AT65-0283 is ideally suited for use where accuracy, fast speed, very low power consumption and low costs are required.

## SOW-16



## Electrical Specifications: $T_A = 25^\circ\text{C}$

Parameter	Test Conditions	Frequency	Units	Min	Typical	Max
Insertion Loss	—	DC - 1.0 GHz	dB	—	2.5	2.7
		DC - 2.0 GHz	dB	—	2.7	3.0
Attenuation Accuracy	Any Bit	DC - 2.0 GHz	dB	—	—	$\pm(.3 + 4\% \text{ of atten})$
	Any Combination of Bits	DC - 2.0 GHz	dB	—	—	$\pm(.3 + 6\% \text{ of atten})$
VSWR	Full Range	DC - 2.0 GHz	Ratio	—	1.5:1	2:1
Switching Speed <sup>1</sup>	50% Cntl to 90%/10% RF 10% to 90% or 90% to 10%	—	nS	—	75	150
		—	nS	—	20	50
1 dB Compression	—	50 MHz	dBm	—	+21	—
		0.5 - 2.0 GHz	dBm	—	+29	—
Input IP <sub>3</sub>	Two-tone inputs up to +5 dBm	50 MHz	dB	—	+35	—
		0.5-2.0 GHz	dB	—	+48	—
V <sub>cc</sub>	—	—	V	4.75	5.0	5.25
-V <sub>ee</sub>	—	—	V	-8.0	-5.0	-4.75
Logic "0"	Sink Current is 20 $\mu\text{A}$ max.	—	V	0.0	—	0.8
Logic "1"	Source Current is 20 $\mu\text{A}$ max.	—	V	2.0	—	5.0
I <sub>cc</sub>	V <sub>cc</sub> min to max, Logic "0" or "1"	—	mA	—	0.2	6
-I <sub>ee</sub>	-I <sub>ee</sub> min to max, Logic "0" or "1"	—	mA	—	-0.2	-1

1. Decoupling capacitors (.01  $\mu\text{F}$ ) are required on power supply lines.

Pin Configuration

Pin #	Function	Pin #	Function
1	RF	9	C8
2	GND	10	Vcc
3	GND	11	Vee
4	GND	12	C4
5	GND	13	C2
6	GND	14	C1
7	GND	15	C0.5
8	RF	16	GND

Truth Table

C8	C4	C2	C1	C0.5	Attenuation
0	0	0	0	0	Loss, Reference
0	0	0	0	1	0.5 dB
0	0	0	1	0	1.0 dB
0	0	1	0	0	2.0 dB
0	1	0	0	0	4.0 dB
1	0	0	0	0	8.0 dB
1	1	1	1	1	15.5 dB

0 = TTL Low; 1 = TTL High

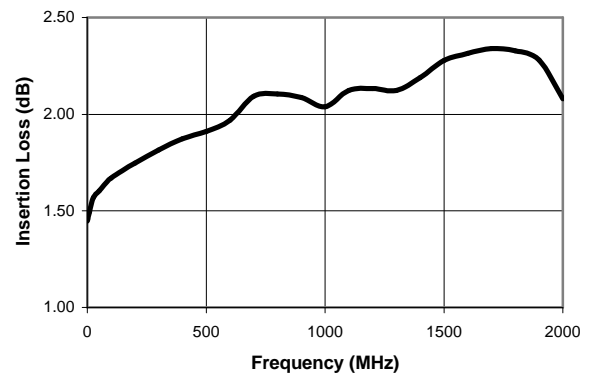
Absolute Maximum Ratings <sup>2</sup>

Parameter	Absolute Maximum
Max. Input Power 0.05 GHz 0.5 - 2.0 GHz	+27 dBm +34 dBm
+Vcc	+5.5V
-Vee	-8.5V
Logic Voltages <sup>3</sup>	-0.5 to Vcc + 0.5V
Operating Temperature	-40°C to +85°C
Storage Temperature	-65°C to +125°C

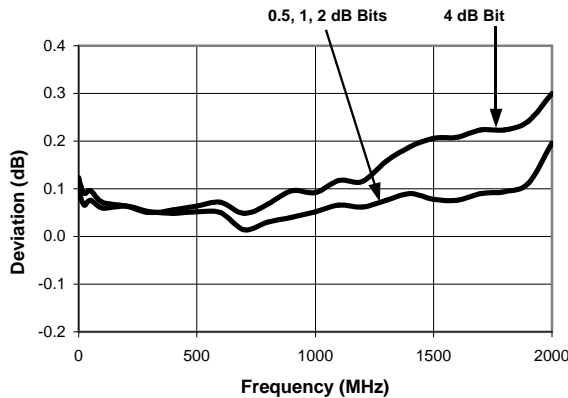
- Operation of this device above any one of these parameters may cause permanent damage.
- Standard CMOS TTL interface, latch-up will occur if logic signal is applied prior to power supply.

Typical Performance Curves

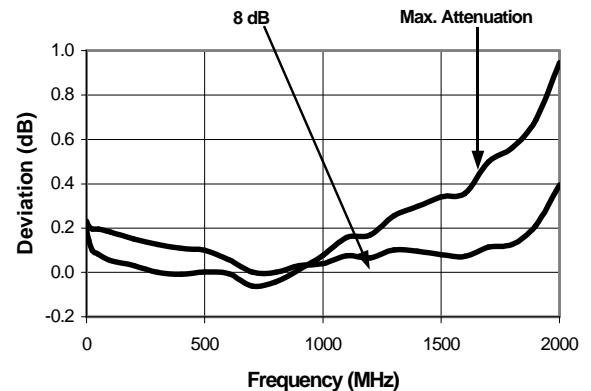
Insertion Loss



Attenuation Accuracy



Attenuation Accuracy



M/A-COM Inc. and its affiliates reserve the right to make changes to the product(s) or information contained herein without notice. M/A-COM makes no warranty, representation or guarantee regarding the suitability of its products for any particular purpose, nor does M/A-COM assume any liability whatsoever arising out of the use or application of any product(s) or information.

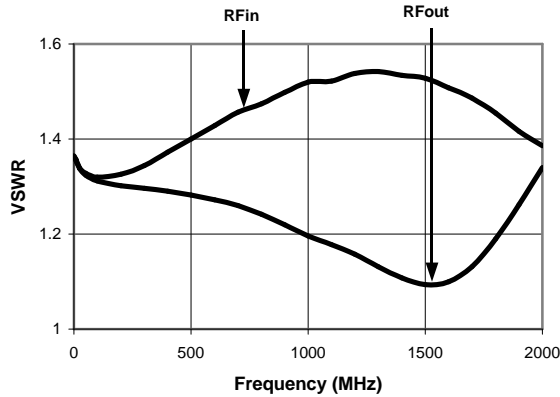
Visit [www.macom.com](http://www.macom.com) for additional data sheets and product information.

- North America: Tel. (800) 366-2266
- Asia/Pacific: Tel.+81-44-844-8296, Fax +81-44-844-8298
- Europe: Tel. +44 (1344) 869 595, Fax+44 (1344) 300 020

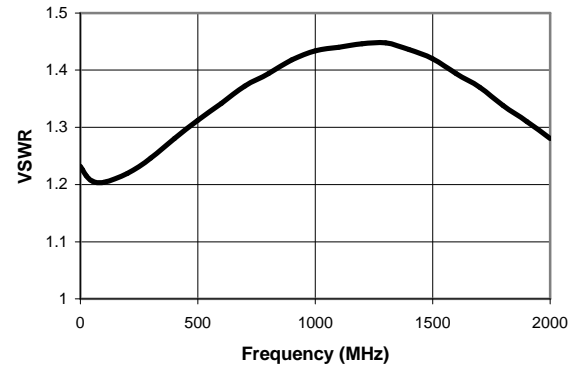


### Typical Performance Curves

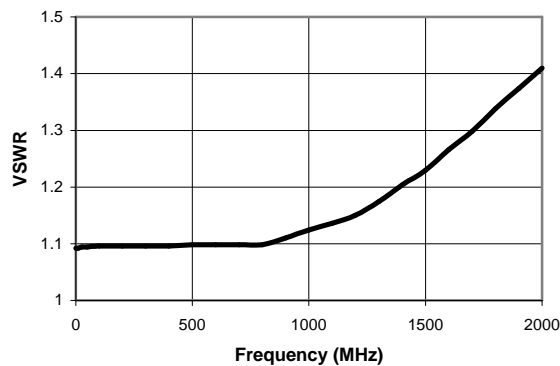
**VSWR @ Insertion Loss**



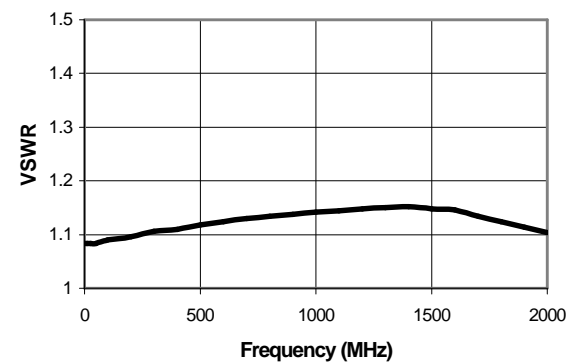
**VSWR RFout, 0.5, 1, 2 & 4 dB Bits**



**VSWR RFin, 0.5, 1, 2, 4, 8 dB Bits and Max Attenuation**



**VSWR RFout, 8 dB Bit & Max Attenuation**



### Ordering Information

Part Number	Package
AT65-0283	Bulk Packaging
AT65-0283TR	Tape and Reel (1K Reel)
AT65-0283-TB	Units Mounted on Test Board

M/A-COM Inc. and its affiliates reserve the right to make changes to the product(s) or information contained herein without notice. M/A-COM makes no warranty, representation or guarantee regarding the suitability of its products for any particular purpose, nor does M/A-COM assume any liability whatsoever arising out of the use or application of any product(s) or information.

Visit [www.macom.com](http://www.macom.com) for additional data sheets and product information.

- North America: Tel. (800) 366-2266
- Asia/Pacific: Tel.+81-44-844-8296, Fax +81-44-844-8298
- Europe: Tel. +44 (1344) 869 595, Fax+44 (1344) 300 020

