

# Time and hours meters electromechanic

Hour counters with DIN dimensions

Display 7-digits, VAC or VDC trigger

B 160



B 160 for DC and AC

## Technical data - electrical ratings

Voltage supply	24/230 VAC $\pm 10\%$ (50 Hz) 110 VAC $\pm 10\%$ (60 Hz) 10...80 VDC
Nominal frequency	50 Hz (24 / 230 VAC) 60 Hz (110 VAC)
Power consumption	1.5 W, 1.5 VA
Gear precision	AC: synchronous to mains, synchro motor DC: <1 s / 24 h, stepping motor
Approval	CE conform

## Features

- Time and hour counter
- DC and AC
- 7-digit number wheel counter
- Measuring range AC: 99999.99 h
- Measuring range DC: 999999.9 h
- Without reset

## Description

Baumer IVO hour counters are applied anywhere to make costs become evident, to observe maintenance intervals, to define warranty periods or to record operation hours.

## Technical data - mechanical design

Display	White numbers on black
Number of digits	7-digits
Digit height	4 mm
Measuring range	AC: 99999.99 h DC: 999999.9 h
Reading accuracy	AC: 1/100 h = 36 s DC: 1/10 h = 6 min
Operating temperature	-25...+70 °C
Storing temperature	-40...+85 °C
Relative humidity	80 % non-condensing
Protection DIN EN 60529	IP 65 face
Housing type	Built-in housing
E-connection	Screw terminal connector
Mounting	Clip frame
Dimensions W x H x L	48 x 48 x 38 mm
Cutout dimensions	See dimensional drawing
Installation depth	38 mm
Weight approx.	110 g
Material	Housing: plastic

# Time and hours meters electromechanic

Hour counters with DIN dimensions

Display 7-digits, VAC or VDC trigger

B 160

## Part number

B 160.100A

Voltage / counting capacity

A5A 24 VAC, 50 Hz / 99 999.99 h

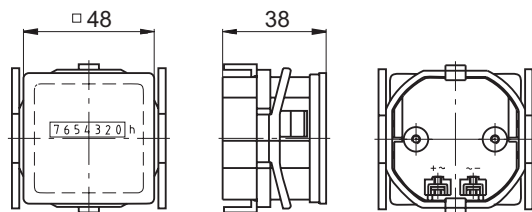
A9A 230 VAC, 50 Hz / 99 999.99 h

B8A 110 VAC, 60 Hz / 99 999.99 h

CBB 10...80 VDC / 999 999.9 h

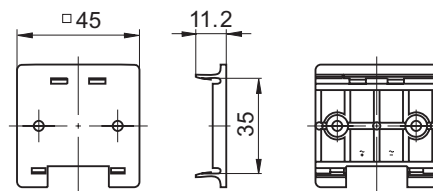
## Dimensions

### Clip frame mount, front 48 x 48 mm



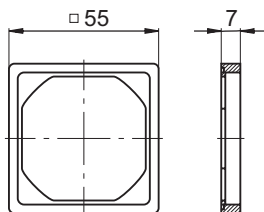
Installation step 1

### Adaptor for mounting rail Z 118.039 (EN 50022)



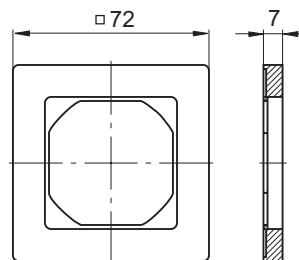
2 mounting screws included in delivery scope

### Adaptor frame Z 118.037, front 55 x 55 mm



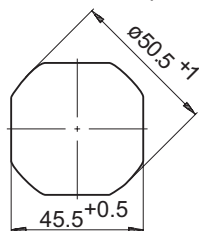
Installation step 1, 2 or 3

### Adaptor frame Z 118.038, front 72 x 72 mm

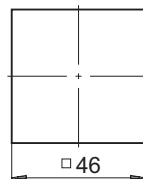


Installation step 1, 2 or 3

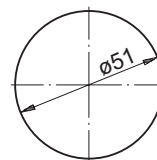
Installation step 1



Installation step 2



Installation step 3



11/12/2008 Subject to modification in technic and design. Errors and omissions excepted.