

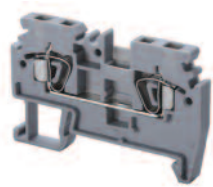
Feed-Through & Multi-Connection Spring Clamp

FEED-THROUGH

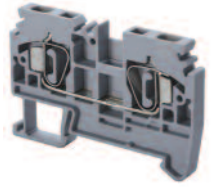
These terminal blocks offer a time saving alternative to the popular screw clamp connection. They can be mounted on 35 mm DIN rails. Insulated push-in type jumpers offer a quick and shock proof solution for most cross-connection applications.



CSC2.5T



CSC4T



CSC6T

Terminal Width	5 mm	6 mm	8 mm
Height x Length	36 x 58 mm	42 x 65 mm	45 x 72 mm
Stripping Length	15 mm	13 mm	15 mm
Insulation Material	Polyamide 6.6	Polyamide 6.6	Polyamide 6.6

MULTI-CONNECTION

Altech Multiple connection Spring Clamp terminals offer a reliable solution for problems posed by multiple voltage connections. The terminal eliminates conventional method of cross connection / looping, saving additional space.

Type of Connection	2 spring clamps & 2 slots for interconnection			2 spring clamps & 2 slots for interconnection			2 spring clamps & 2 slots for interconnection		
Approvals									
Wire Range	22-14 AWG	0.5-2.5 sq.mm	22-14 AWG	22-12AWG	0.5-4 sq.mm	22-12 AWG	22-8AWG	0.5-8sq.mm	22-8AWG
Voltage Rating	600 V	800 V	600 V	600 V	800 V	600 V	600 V	800 V	600 V
Current Rating	20 A	24 A	20 A	25 A	32 A	25 A	50 A	41 A	50 A
Other Approvals									

The terminals provide of further multiplication connections through bridging. The Multiple Connection Terminal Blocks can even be bridged to Standard Feed Through Spring Clamp Terminal Block of respective wire size (CSC2.5T / CSC4T / CSC6T).

	Cat. No.	Std. Pk.	Cat. No.	Std. Pk.	Cat. No.	Std. Pk.
Terminal Block	CSC2.5T	100	CSC4T	100	CSC6T	50
End Plate	EPCSC2.5T	50	EPSC4T	50	EPSC6T	50
Partition Plate	PPCSC2.5T	50	PPCSC4T	50	PPCSC6T	50
DIN Rail for ordering information refer to page 70						
End Stop for ordering information refer to page 72	CA702	50	CA702	50	CA702	50
	CA802	50	CA802	50	CA802	50
Jumpers Adjacent Alternate	CA801/1	100	CA801/2	100	CA801/3	100
	CA801/1-3	100	CA801/2-3	100	CA801/3-3	100
Push in type wire jumper	CA901/1	100	CA901/2	100	CA901/3	100
Marking Tags (MT Type)	MT5	100	MT6	100	MT8	100

COLOR BLOCKS
(other than grey standard)

When ordering please add color suffix to Cat. No.

Example: CTS2.5U-N/R

Color	Ordering Suffix	
Red	R	
Blue	BU	
Black	BL	
Orange	O	
Green	G	
Yellow	Y	
White	W	
Beige	BG	
Dark Brown	DB	

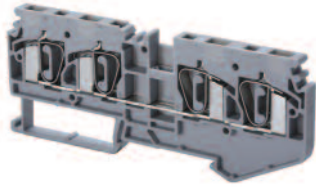
CSC10T			CSC16T			CSC2.5T1-2			CSC2.5T2-2			CSC4T1-2		
10 mm			12 mm			5 mm			5 mm			6 mm		
50 x 75 mm			45 x 72 mm			36 x 74 mm			36 x 90 mm			42 x 85 mm		
18 mm			20 mm			15 mm			15 mm			13 mm		
Polyamide 6.6			Polyamide 6.6			Polyamide 6.6			Polyamide 6.6			Polyamide 6.6		
2 spring clamps & 2 slots for interconnection			2 spring clamps & 2 slots for interconnection			3 spring clamps & 2 slots for interconnection			4 spring clamps & 2 slots for interconnection			3 spring clamps & 2 slots for interconnection		
UL ^①			UL ^①			C SA US VDE C E220514			C SA US VDE C E220514			C SA US VDE C E220514		
16-6AWG	1.5-10sq.mm	16-6AWG	16-4AWG	1.5-16sq.mm	16-4AWG	22-14AWG	0.5-2.5sq.mm	22-14AWG	22-14AWG	0.5-2.5sq.mm	22-14AWG	22-12AWG	0.5-2.5sq.mm	22-12AWG
600 V	800 V	600 V	600 V	800 V	600 V	600 V	800 V	600 V	600 V	800 V	600 V	600 V	800 V	600 V
65 A	57 A	65 A	85 A	76 A	85 A	20 A	24 A	20 A	20 A	24 A	20 A	25 A	32 A	25 A
RoHS			RoHS			RoHS EX CE IEC			RoHS EX CE IEC			RoHS EX CE IEC		
Cat. No.	Std. Pk.		Cat. No.	Std. Pk.		Cat. No.	Std. Pk.		Cat. No.	Std. Pk.		Cat. No.	Std. Pk.	
CSC10T	50		CSC16T	50		CSC2.5T1-2	100		CSC2.5T2-2	50		CSC4T1-2	50	
EPSC10T	50		EPSC16T	50		EPSC2.5T1-2	50		EPSC2.5T2-2	50		EPSC4T1-2	50	
CA702	50		CA702	50		CA702	50		CA702	50		CA702	50	
CA802	50		CA802	50		CA802	50		CA802	50		CA802	50	
CA801/4	100		CA801/5	100		CA801/1	100		CA801/1	100		CA801/2	100	
						CA801/1-3	100		CA801/1-3	100		CA801/2-3	100	
						CA901/1	100		CA901/1	100		CA901/2	100	
MT10	100		MT12	100		MT5	100		MT5	100		MT6	100	
						MT6F	100		MT6F	100		MT6F	100	

① UL recognition in progress.

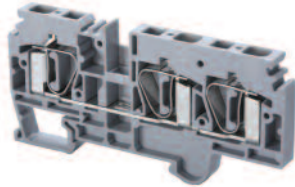
Feed-Through & Multi-Connection Spring Clamp



CSC4T2-2



CSC6T1-2



ADL2.5

Terminal Width	6 mm			8 mm			5 mm		
Height x Length	42 x 105 mm			45 x 94 mm			50 x 79.5 mm		
Stripping Length	13 mm			15 mm			14 mm		
Insulation Material	Polyamide 6.6			Polyamide 6.6			Polyamide 6.6		
Type of Connection	4 spring clamps & 2 slots for interconnection			3 spring clamps & 2 slots for interconnection			4 spring clamps & 4 slots for interconnection		
Approvals									
Wire Range	22-12 AWG	0.5-4 sq.mm.	22-12 AWG	22-8 AWG	0.5-6 sq.mm.	22-8 AWG	22-12 AWG	2.5 sq.mm.	22-12 AWG
Voltage Rating	600 V	800 V	600 V	600 V	800 V	600 V	300 V	800 V	300 V
Current Rating	25 A	32 A	25 A	50 A	41 A	50 A	20 A	24 A	25 A
Other Approvals									

	Cat. No.	Std. Pk.	Cat. No.	Std. Pk.	Cat. No.	Std. Pk.
Terminal Block	CSC4T2-2	50	CSC6T1-2	50	ADL2.5	50
End Plate	EPCSC4T2-2	50	EPCSC6T1-2	50	EPADL2.5	50
DIN Rail for ordering information refer to page 70						
End Stop for ordering information refer to page 72	CA702	50	CA702	50	CA702	50
	CA802	50	CA802	50	CA802	50
Jumpers Adjacent Alternate	CA801/2	100	CA801/3	100	CA801/1	100
	CA801/2-3	100	CA801/3-3	100	CA801/1-3	100
Push in type wire jumper	CA901/2	100	CA901/3	100	CA901/1	100
Marking Tags (MTType)	MT6	100	MT8	100	MT5	100
	MT6F	100	MT6F	100	MT6F	100