

Features

Regulated Converters

- World's Most Compact High Voltage Power Supplies
- Full SMD-Design with Ceramic Capacitors for Highest Reliability
- Positive or Negative Polarity Models
- Shielded Metal Case
- Low Ripple & Temperature Coefficient
- Remote Voltage Programming 0 to 100%
- Continuous Short Circuit Protection
- 2-Year Product Warranty
- Input Voltage Special Request
- Efficiency to 65%

INNOLINE
DC/DC-Converter

Rxx-S Series

**2 ~ 2.5 Watt
Single
Output**

Selection Guide

| Part Number | Input Range (VDC) | Output Voltage (VDC) | Output Current (mA) |
|----------------|--------------------|----------------------|---------------------|
| R12-180 S 15 P | 12 (10.8 – 13.2) | 0...+180 | 15 |
| R12-300 S 10 P | 12 (10.8 – 13.2) | 0...+300 | 10 |
| R12-350 S 07 P | 12 (10.8 – 13.2) | 0...+350 | 7 |
| R24-180 S 15 P | 24 (21.6 – 26.4) | 0...+180 | 15 |
| R24-300 S 10 P | 24 (21.6 – 26.4) | 0...+300 | 10 |
| R24-350 S 07 P | 24 (21.6 – 26.4) | 0...+350 | 7 |
| R12-180 S 15 N | 12 (10.8 – 13.2) | 0...-180 | 15 |
| R12-300 S 10 N | 12 (10.8 – 13.2) | 0...-300 | 10 |
| R12-350 S 07 N | 12 (10.8 – 13.2) | 0...-350 | 7 |
| R24-180 S 15 N | 24 (21.6 – 26.4) | 0...-180 | 15 |
| R24-300 S 10 N | 24 (21.6 – 26.4) | 0...-300 | 10 |
| R24-350 S 07 N | 24 (21.6 – 26.4) | 0...-350 | 7 |



RECOM

Notes:

1. Adjustable with external voltage 0 to +4VDC or with 5k. variable resistor. See below for details.
2. "N" for Negative.
3. "P" for Positive.

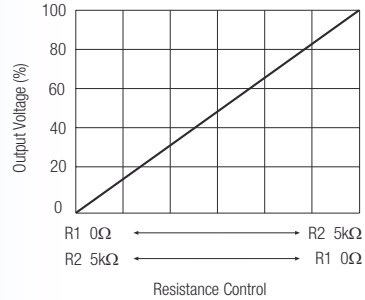
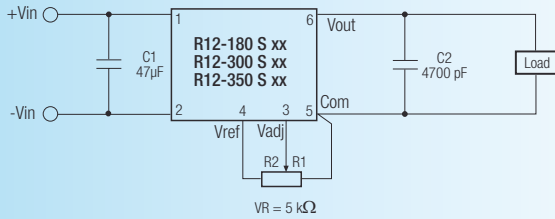
Specifications

(typical at 25°C, nominal input voltage, rated output current unless otherwise specified)

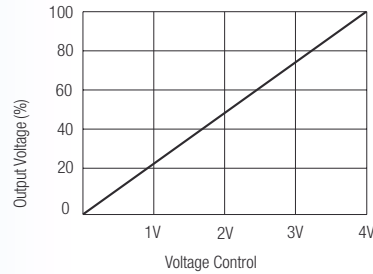
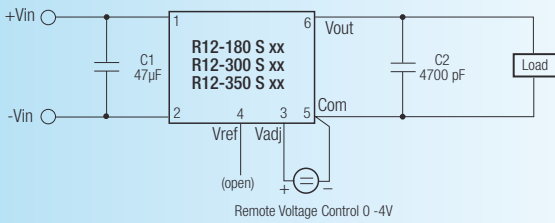
| | |
|---------------------------------------------------|------------------|
| Output Voltage Accuracy | ±5% |
| Rated Power | 2 ~ 2.5 Wat max. |
| Voltage Adjustment Range (see note 1) | 0-100% |
| Line Voltage Regulation | ±0.03% |
| Load Voltage Regulation (0% to 100% full load) | ±0.08% |
| Output Ripple and Noise (20MHz limited) | 30mVp-p max. |
| Efficiency at Full Load | 60 ~ 65% |
| Operating Temperature Range (free air convection) | -10°C to +60°C |
| Storage Temperature Range | -25°C to +85°C |
| Package Weight | 46g |

Connection Diagram

For remote control by variable resistor

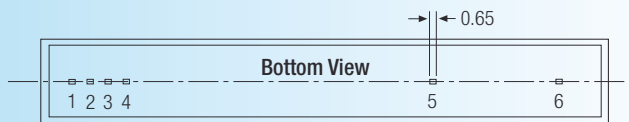
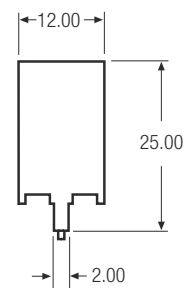
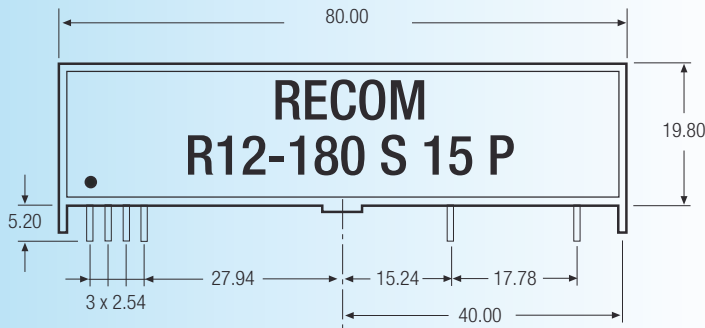


For remote voltage control



Package Style and Pinning

3rd angle projection



Pin Connections

| Pin # | Out |
|-------|--------|
| 1 | +Vin |
| 2 | -Vin |
| 3 | V adj. |
| 4 | V ref. |
| 5 | -Vout |
| 6 | +Vout |

XX.X ± 0.5 mm
XX.XX ± 0.25 mm