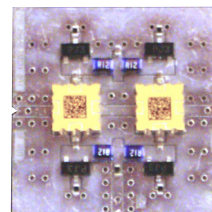


MULTI-MIX PICO™ COMPONENTS MOUNTED ON MERRIMAC BOARD

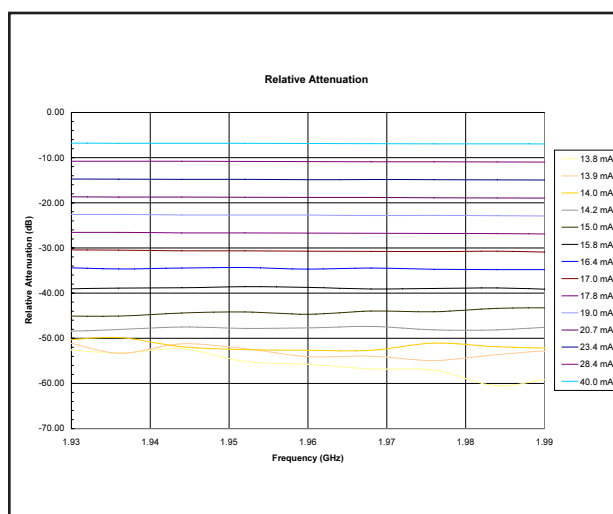
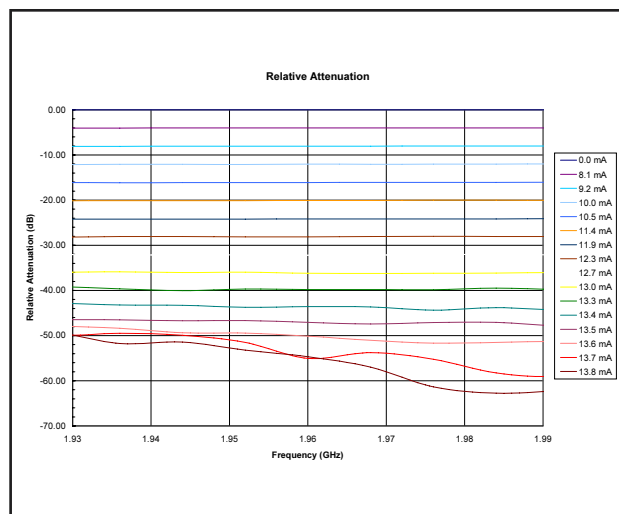
- PRE-MOUNTED AND PRE-TESTED
- 1.93 - 1.99 GHz
- 45 dB ATTENUATION RANGE
- SURFACE MOUNT OR CONNECTORIZED
- LOW LOSS



GENERAL SPECIFICATIONS

| | |
|--|--------------------------------|
| Frequency Range: | 1.93 – 1.99 GHz |
| Attenuation Range: | 0 – 45 dB |
| Attenuation Flatness: | 0.5 dB (0 - 40 dB attenuation) |
| Insertion Loss: | 3 dB (@ 0 mA) |
| VSWR: | 1.9:1 |
| Impedance: | 50 Ohms |
| Control Current: | 0 to + 40 mA |
| Control Voltage: | 0 to + 15 V |
| Input 1-dB Compression Point: | + 31 dBm |
| Input Intercept Point (2 Tone, 3rd Order): | + 41 dBm |
| Switching Speed: | 10 μs |
| Operating Temperature: | -55°C to 85°C |
| Footprint Outline: | 0.8" x 0.8" |

SIMULATED PERFORMANCE CHARTS



THE MULTI-MIX MICROTECHNOLOGY® GROUP IS ISO-9001 REGISTERED



U.S. patent 6,099,677 and other patents pending

Merrimac Industries / 41 Fairfield Place, West Caldwell, NJ 07006
Tel: 1.888.434.MMFM / Fax: 973.882.5990 / Email: MMFM@merrimacind.com / www.Multi-Mix.com

SIMULATED PERFORMANCE CHARTS

