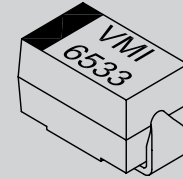


2,000 V - 5,000 V Rectifiers
0.05 A - 0.25 A Forward Current
70 ns Recovery Time

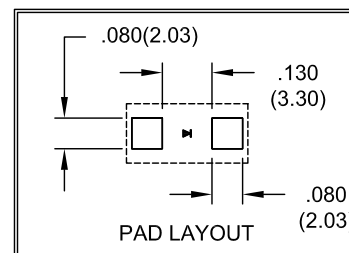
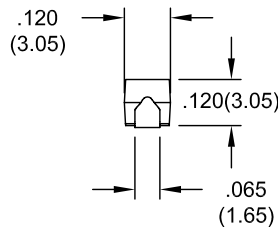
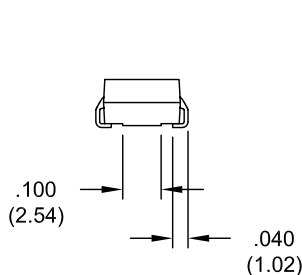
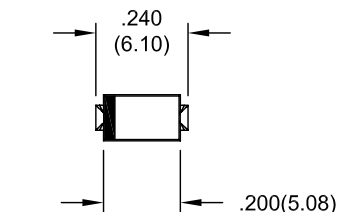
SMF6529
SMF6531
SMF6533



ELECTRICAL CHARACTERISTICS AND MAXIMUM RATINGS

Part Number	Working Reverse Voltage (V _{rw})	Average Rectified Current (I _o)		Reverse Current @ V _{rw} (I _r)		Forward Voltage (V _f)		1 Cycle Surge Current t _p =8.3ms (I _{fsm})	Repetitive Surge Current (I _{frm})	Reverse Recovery Time (3) (T _{rr})	Thermal Impd. θ _{J-C}	Junction Cap. @50VDC @1kHz (C _j)
		55°C(1)	100°C(2)	25°C	100°C	25°C		25°C	25°C	25°C	25°C	25°C
	Volts	Amps	Amps	µA	µA	Volts	Amps	Amps	Amps	ns	°C / W	pF
SMF6529	2000	0.250	0.125	0.1	10	3.0	0.025	10	1.50	70	20	4.0
SMF6531	3000	0.100	0.050	0.1	10	7.0	0.025	8	1.25	70	20	2.0
SMF6533	5000	0.050	0.025	0.1	10	9.0	0.025	4	0.75	70	20	1.0

(1) TC=55°C (2)TC=100°C (3)I_f=12.5mA, I_r=25.0mA, I_{rr}=6.3mA *Op. Temp.= -65°C to +175°C Stg. Temp.= -65°C to +200°C



Dimensions: In. (mm) • All temperatures are ambient unless otherwise noted. • Data subject to change without notice.



VOLTAGE MULTIPLIERS INC.
 8711 W. Roosevelt Ave.
 Visalia, CA 93291

TEL 559-651-1402
 FAX 559-651-0740
 www.voltagemultipliers.com