

LG - 248

The LG – 248 photointerrupter combine high output GaAs IRED with Photo IC.The sensor makes possible easy development of object detecting systems with highperformance,high reliability and small equipment size.

LG - 248L1 : High level output at shielding

LG - 248D1 : Low level output at shielding

**FEATURES**

- Connector type AMP( JAPAN )Ltd.
- GAP : 5.0mm
- Snap-in mount
- 3 kinds of mounting plate thicknesses :1.0mm,1.2mm,1.6mm

**APPLICATIONS**

- Copiers
- Printers
- Auto stampers
- Ticket vending machines

**MAXIMUM RATINGS**

(Ta=25 )

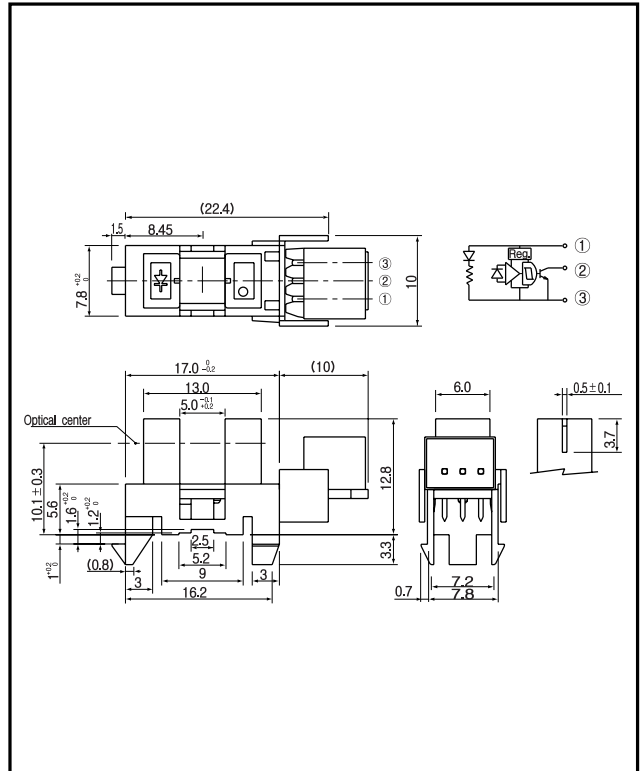
Item	Symbol	Rating	Unit
Supply voltage	V <sub>cc</sub>	8	V
Output voltage	V <sub>o</sub>	12	V
Low level output current	I <sub>oL</sub>	16	mA
Power dissipation	P	100	mW
Operating temp.*1.*2	T <sub>opr.</sub>	- 25 ~ + 75	
Storage temp.*1.*2	T <sub>stg</sub>	- 30 ~ + 85	

\*1. The connector shall be inserted or pulled out at normal temperature.

\*2. No icebound or dew

**DIMENSIONS**

(Unit : mm)



**ELECTRO-OPTICAL CHARACTERISTICS**

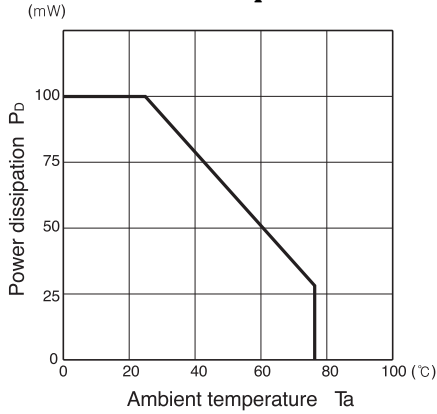
(Ta=25 )

Item	Symbol	Conditions	Min.	Typ.	Max.	Unit.
Operating supply voltage rang	V <sub>cc</sub>		4.5		5.5	V
Low level output voltage	V <sub>oL</sub>	V <sub>cc</sub> = 5V, I <sub>oL</sub> = 16mA, (Shading)		0.3	0.4	V
High level output voltage	V <sub>oH</sub>	V <sub>cc</sub> = 5V, R <sub>L</sub> = 10k <sub>Ω</sub> , (Non- shading)	4.5			V
Low level supply current	I <sub>ccL</sub>	V <sub>cc</sub> = 5V, (Shading)		20	35	mA
High level supply current	I <sub>ccH</sub>	V <sub>cc</sub> = 5V, (Non- shading)		20	35	mA
Frequency	f	V <sub>cc</sub> = 5V, R <sub>L</sub> = 10k <sub>Ω</sub>	3000			Hz

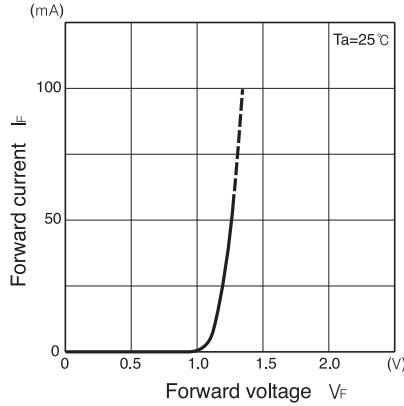
Photointerrupters(Transmissive)

LG - 248

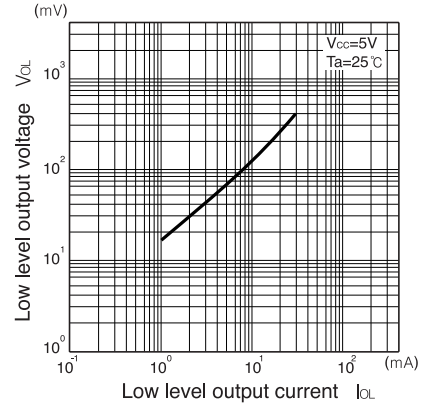
**Power dissipation Vs. Ambient temperature**



**Forward current Vs. Forward voltage**



**Low level output voltage Vs. Low level output current**



**Low level output voltage Vs. Ambient temperature**

