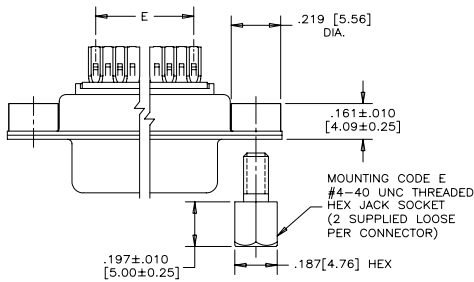


REVISIONS				
REV	ECN, ERN NO.	DATE	APPRD.	
J	PRODUCT DRAWING (EAR13166)	SEP26/07	K.L.	



ORDERING CODE: FCC17 - E09PM - 440G

SERIES: FCC17  
 SIZE/NUMBER OF CONTACTS: E09, A15, B25, OR C37  
 CONNECTOR STYLE: P = PIN, S = SOCKET  
 TERMINATION TYPE: M = SOLDER CUP

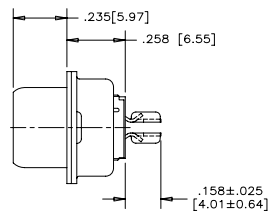
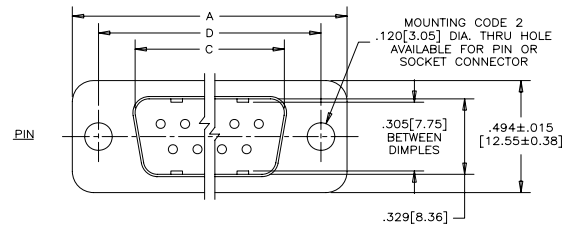
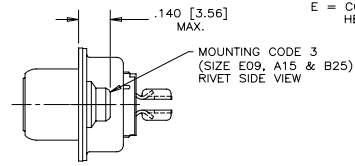
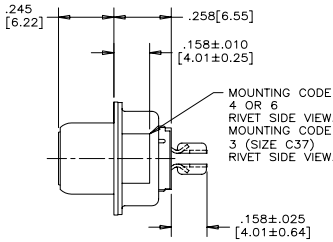
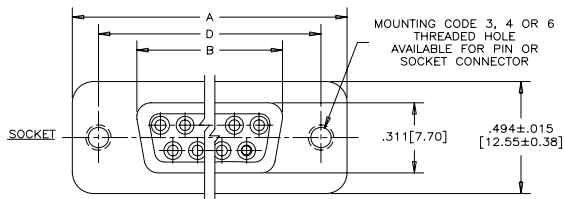
CONTACT FINISH/GOLD THICKNESS  
 NO DIGIT = STANDARD 15 MICROINCHES [0.38 MICRONS] GOLD  
 G = 50 MICROINCHES [1.27 MICRONS] GOLD

MODIFIER  
 0 = STANDARD

FILTER CAPACITANCE  
 D = 50 pF    5 = 1000 pF  
 B = 100 pF    7 = 1200 pF  
 O = 180 pF    E = 2200 pF  
 F = 330 pF    9 = 5600 pF  
 L = 380 pF    8 = 47000 pF  
 1 = 470 pF    N = NO FILTERS  
 4 = 820 pF

REFER TO AMPHENOL CATALOGUE FOR FILTER PERFORMANCE CHARACTERISTICS

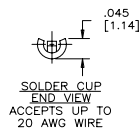
MOUNTING  
 2 = .120[3.05] DIA THROUGH HOLE  
 3 = #4-40 UNC SELF-LOCKING THREAD  
 4 = #4-40 UNC THREAD  
 6 = M3 x 0.5 THREAD  
 E = CODE 4 MOUNTING WITH #4-40 UNC HEX JACK SOCKET SUPPLIED LOOSE



NOTES:

1. MATERIALS: - SHELLS - TIN PLATED STEEL  
 - CONTACTS - PHOSPHOR BRONZE PLATED WITH GOLD OVER NICKEL ON THE MATING AREA AND TIN-LEAD ON THE TERMINALS  
 - INSULATOR - ENGINEERING THERMOPLASTIC, FLAMMABILITY RATING UL94V-0, BLACK.
2. CONTACT RESISTANCE: 15 MILLIOHMS MAXIMUM.
3. INSULATION RESISTANCE: 3000 MEGOHMS MINIMUM
4. CURRENT RATING: 5 AMPS MAXIMUM  
 2 AMPS FILTERING MAXIMUM
5. OPERATING TEMPERATURE: -40°C TO 85°C.
6. TOLERANCE, UNLESS INDICATED OTHERWISE, ±.005 [0.13].

SIZE	STYLE	A±.015 [0.38]	B±.005 [0.13]	C±.005 [0.13]	D±.005 [0.13]	E BSC.
E09	PIN	1.213 [30.81]	-----	.666[16.92]	.984 [24.99]	.432 [10.97]
	SOCKET	-----	.643[16.33]	-----	-----	-----
A15	PIN	1.541 [39.14]	-----	.994[25.25]	1.312 [33.32]	.756 [19.20]
	SOCKET	-----	.971[24.66]	-----	-----	-----
B25	PIN	2.088 [53.04]	-----	1.534[38.96]	1.852 [47.04]	1.304 [33.12]
	SOCKET	-----	1.511[38.38]	-----	-----	-----
C37	PIN	2.729 [69.32]	-----	2.182[55.42]	2.500 [63.50]	1.956 [49.68]
	SOCKET	-----	2.159[54.84]	-----	-----	-----



DRAWN	LESSAJEE	DATE	98/03/09
DESIGNED	K.LAMBIE	DATE	98/03/04
CHECKED			
I. E. APPRD.			
Q. A. APPRD.			
DWG. APPRD.			
ENG. REL. NO.			
REF.			
DIMENSIONS ARE IN		CODE ID. NO.	03554
INCHES [mm]		SCALE	3/1

**Amphenol Canada Corp.**

TITLE: FCC17 FILTERED D-SUB CONNECTOR, PIN & SOCKET, SOLDER CUP CONTACTS

DWG	DRAWING NO.	REV.
C	P-FCC17-XXXXM-XXOX	J
SCALE	3/1	WT. -----
SURF.	-----	SHEET 1 OF 1

THIS DOCUMENT CONTAINS PROPRIETARY INFORMATION AND SUCH INFORMATION MAY NOT BE DISCLOSED TO OTHERS FOR ANY PURPOSE OR USED FOR MANUFACTURING PURPOSES WITHOUT WRITTEN PERMISSION FROM AMPHENOL CANADA CORP.