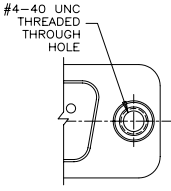
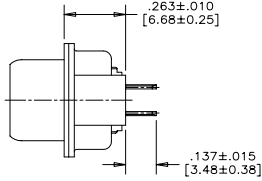


REVISIONS			
REV	ECN, ERN NO.	DATE	APPRD.
J	PRODUCT DRAWING (EAR 12782)	JUN27/05	K.L.

ADDITIONAL MOUNTING OPTIONS AVAILABLE FOR PIN OR SOCKET CONNECTOR

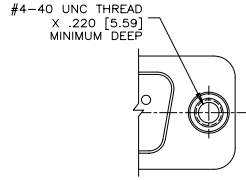


PARTIAL FRONT VIEW

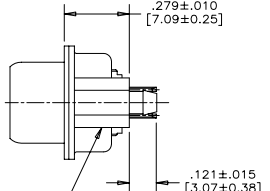


SIDE VIEW

MOUNTING CODE 5

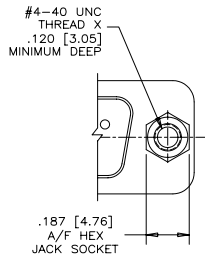


PARTIAL FRONT VIEW

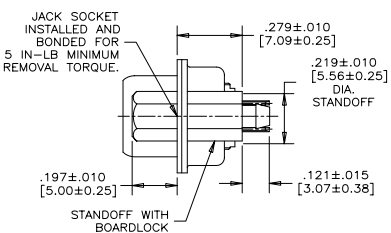


SIDE VIEW

MOUNTING CODE A

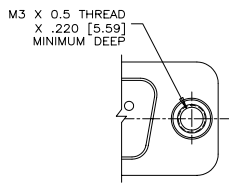


PARTIAL FRONT VIEW

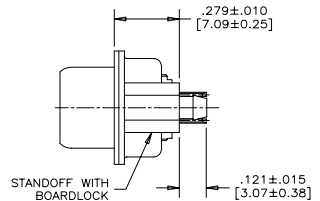


SIDE VIEW

MOUNTING CODE 9



PARTIAL FRONT VIEW



SIDE VIEW

MOUNTING CODE J

THIS DOCUMENT CONTAINS PROPRIETARY INFORMATION AND SUCH INFORMATION MAY NOT BE DISCLOSED TO OTHERS FOR ANY PURPOSE OR USED FOR MANUFACTURING PURPOSES WITHOUT WRITTEN PERMISSION FROM AMPHENOL CANADA CORP.

DRAWN I.ESSAJEE	DATE 97/12/01	Amphenol Canada Corp.
DESIGNED K.LAMBIE	97/11/27	
CHECKED		TITLE FCC17 FILTERED D-SUB, VERTICAL MOUNT PCB TAIL, PIN & SOCKET
I. E. APPRD.		
Q. A. APPRD.		
DWG. APPRD.		
ENG. REL. NO.		DWG. DRAWING NO. P-FCC17-XXXXE-XXOX
REF.		REV. J
DIMENSIONS ARE IN INCHES [mm]	CODE ID. NO. 03554	SCALE 3/1
		WT. ----- SURF. ----- SHEET 2 OF 2

A B C D E F