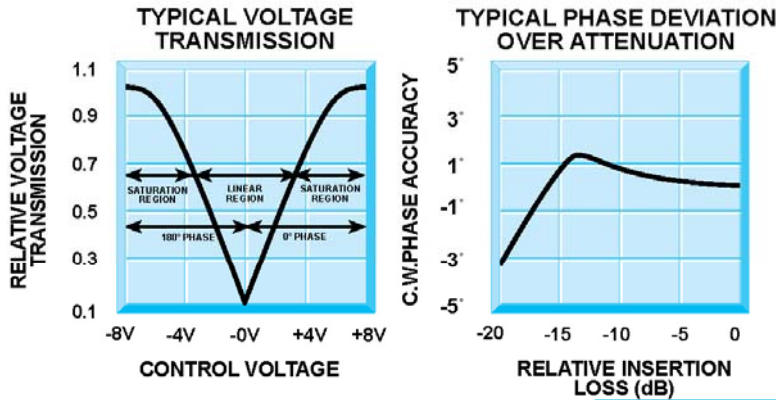


# ATTL-9700 PIN DIODE BRIDGE ATTENUATOR

## ATTL-9700 Pin Diode Bridge Attenuator

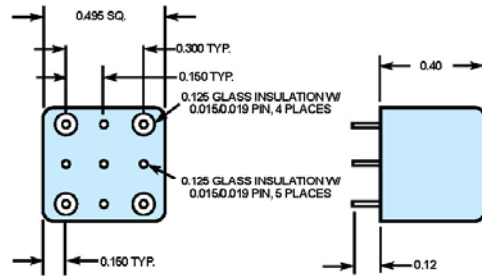


### Guaranteed Specifications (-54° to +85°C)

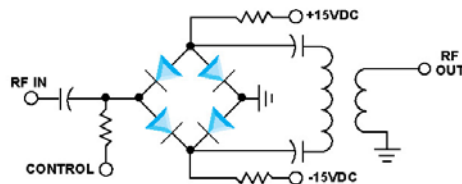
Frequency Range	10 to 500 MHz
Insertion Loss	3.0 dB Max.
VSWR	1.6:1 Max.
Control Voltage	±10V Max.
Null Depth	40 dB
DC Bias Voltage	+15 & -15V ±0.1V
Impedance Input & Output	50 Ohms

PIN NO.	FUNCTION
1	RF IN
2	RF OUT
6	CONTROL
5	+15V DC
4	-15V DC
3, 7	GROUND

### Mechanical Outline



### Functional Schematic



STC Microwave Systems – [www.craneae.com](http://www.craneae.com)  
 28 Tozer Road • Beverly, MA 01915  
 phone: 978-524-7200 • email: [electronics@craneae.com](mailto:electronics@craneae.com)

Revision ATTL-9700 2005 08252005

STC MICROWAVE SYSTEMS - OLEKTRON  
 A CRANE CO. COMPANY

