

TYPICAL INDICATOR ORDERING EXAMPLE

P01

12

C

1

A

LAMPS

Incandescent

06	6-volt
12	12-volt
18	18-volt
24	24-volt
28	28-volt

Neon

N	110-volt
----------	----------

CAP COLORS

B	White
C	Red
D	Orange
E	Yellow
*F	Green
*G	Blue

*F & G not suitable with neon.

BEZELS

1	.787" (20.0mm) Wide
2	.937" (23.8mm) Wide

BEZEL COLORS

A	Black
B	White
C	Red
D	Orange
E	Yellow
F	Green
G	Blue
H	Gray

DESCRIPTION FOR TYPICAL ORDERING EXAMPLE

P01-12-C-1A

Red Cap






12-volt Incandescent Lamp

Black .787" (20.0mm) Bezel

LAMP CODES & SPECIFICATIONS

Incandescent & Neon Lamps for Solid & Design Caps

AT602 Incandescent	AT602N Neon	L(+)  L(-)	06	12	18	24	28	N	
			Voltage V	6V	12V	18V	24V	28V	110V
			Current I	80mA	50mA	35mA	25mA	22mA	1.5mA
			MSCP	.159	.215	.398	.215	.247	NA
			Endurance Hours	2,000 Average					15,000 Avg.
			Ambient Temperature Range	-10° ~ +50°C					
T-1 ½ Pilot Slide Base		Recommended Resistor for Neon: 33K ohms for 110V AC & 100K ohms for 220V AC							

Electrical specifications are determined at a basic temperature of 25°C.

For dimension drawings of lamps, see Accessories & Hardware Index.

If the source voltage is greater than rated voltage, a ballast resistor is required.

The ballast resistor calculation and more lamp detail are shown in the Supplement section.

CAP COLORS

B

White

D

Orange

F

Green

C

Red

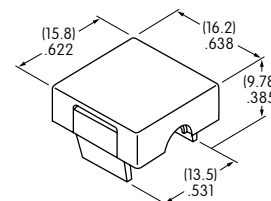
E

Yellow

G

Blue

AT429

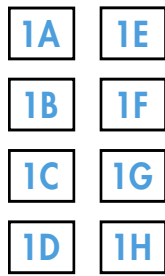


Material: Polycarbonate

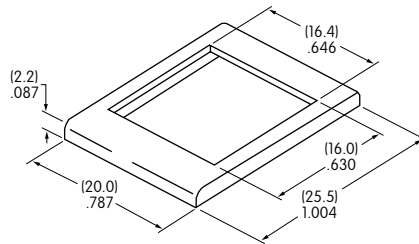
Finish: Glossy

F & G not suitable for neon

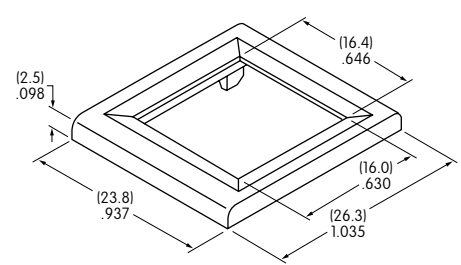
OPTIONAL BEZELS & COLORS



AT204
.787" (20.0mm) Wide Bezel



AT9201
.937" (23.8mm) Wide Bezel



Material: Polycarbonate

Standard Finish: Glossy

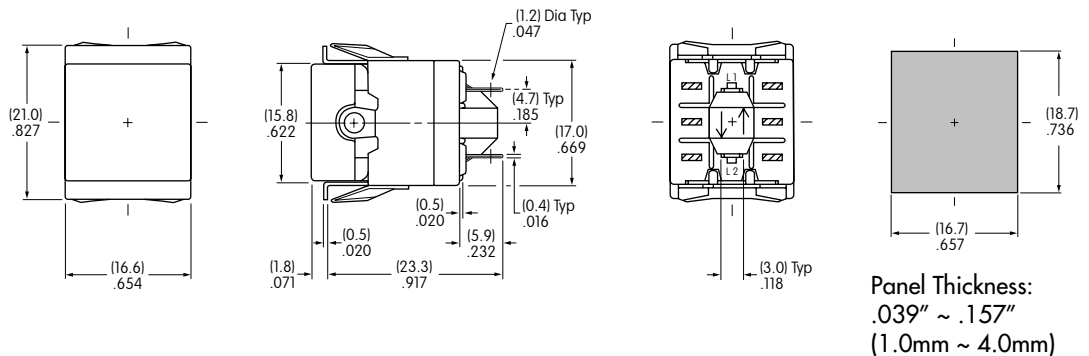
Color Codes: **A** Black **B** White **C** Red **D** Orange **E** Yellow **F** Green **G** Blue **H** Gray

TYPICAL INDICATOR DIMENSIONS

Without Bezel



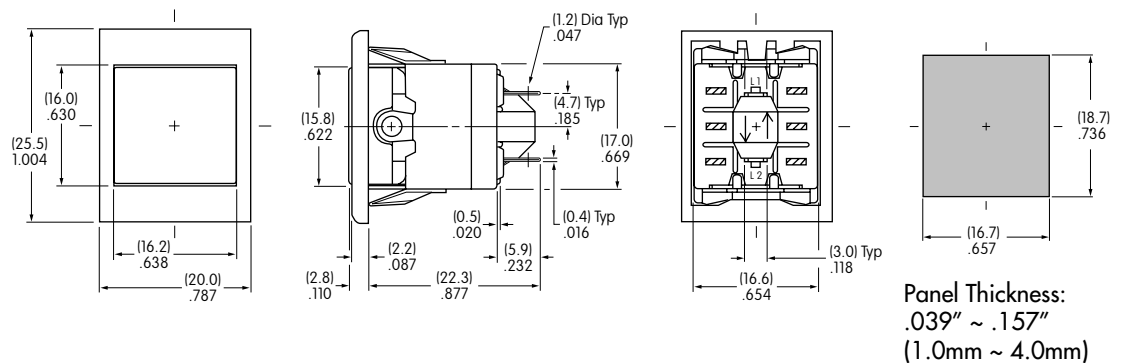
P01-12-C



With Bezel



P01-12-C-1A



With Large Bezel



P01-12-C-2A

