



Shanghai Lunsure Electronic
Technology Co.,Ltd
Tel:0086-21-37185008
Fax:0086-21-57152769

UF5400GP THRU UF5408GP

Features

- High Surge Capability
- Glass Passivated Junction
- Low Forward Voltage Drop
- Ultra Fast Switching Speed For High Efficiency

Maximum Ratings

- Operating Temperature: -55°C to +150°C
- Storage Temperature: -55°C to +150°C
- Typical Thermal Resistance 20°C/W

| Catalog Number | Device Marking | Maximum Recurrent Peak Reverse Voltage | Maximum RMS Voltage | Maximum DC Blocking Voltage |
|----------------|----------------|--|---------------------|-----------------------------|
| UF5400GP | --- | 50V | 35V | 50V |
| UF5401GP | --- | 100V | 70V | 100V |
| UF5402GP | --- | 200V | 140V | 200V |
| UF5404GP | --- | 400V | 280V | 400V |
| UF5406GP | --- | 600V | 420V | 400V |
| UF5407GP | --- | 800V | 560V | 800V |
| UF5408GP | --- | 1000V | 700V | 1000V |

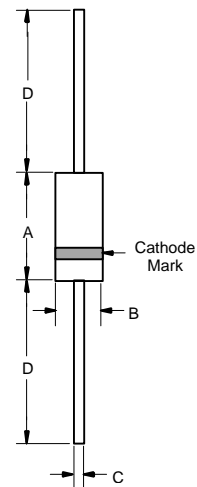
Electrical Characteristics @ 25°C Unless Otherwise Specified

| | | | |
|---|-------------|--------------------------|---|
| Average Forward Current | $I_{F(AV)}$ | 3 A | $T_A = 55^\circ\text{C}$ |
| Peak Forward Surge Current | I_{FSM} | 100A | 8.3ms, half sine |
| Maximum Instantaneous Forward Voltage UF5400GP-5402GP UF5404GP UF5406GP-5408GP | V_F | 1.0V 1.3V 1.7V | $I_{FM} = 3.0A;$ $T_A = 25^\circ\text{C}$ |
| Maximum DC Reverse Current At Rated DC Blocking Voltage | I_R | 10 μ A 50 μ A | $T_A = 25^\circ\text{C}$ $T_A = 100^\circ\text{C}$ |
| Maximum Reverse Recovery Time UF5400GP-5404GP UF5406GP-5408GP | T_{rr} | 50ns 75ns | $I_F=0.5A, I_R=1.0A,$ $I_{rr}=0.25A$ |
| Typical Junction Capacitance UF5400GP-5404GP UF5406GP-5408GP | C_J | 75pF 50pF | Measured at 1.0MHz, $V_R=4.0V$ |

*Pulse Test: Pulse Width 300 μ sec, Duty Cycle 1%

3 Amp Ultra Fast Glass Passivated Recovery Rectifier 50 to 1000 Volts

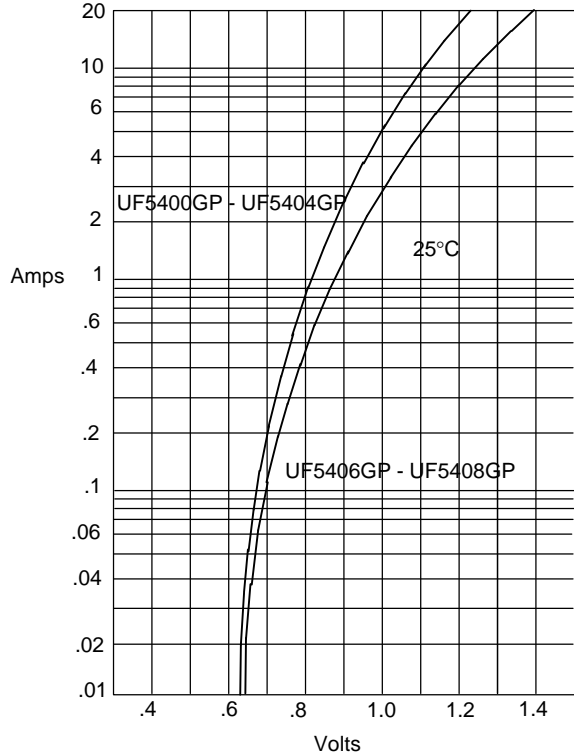
DO-201AD



| DIM | DIMENSIONS | | | | NOTE |
|-----|------------|------|-------|------|------|
| | INCHES | | MM | | |
| A | --- | .370 | --- | 9.50 | |
| B | --- | .250 | --- | 6.40 | |
| C | .048 | .052 | 1.20 | 1.30 | |
| D | 1.000 | --- | 25.40 | --- | |

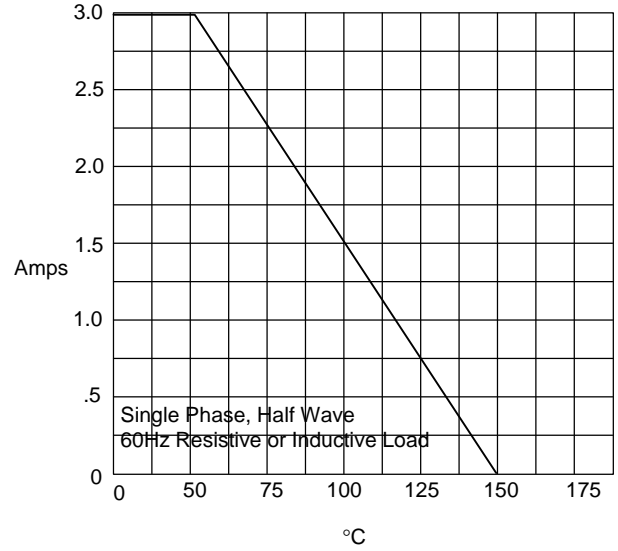
UF5400GP thru UF5408GP

Figure 1
Typical Forward Characteristics



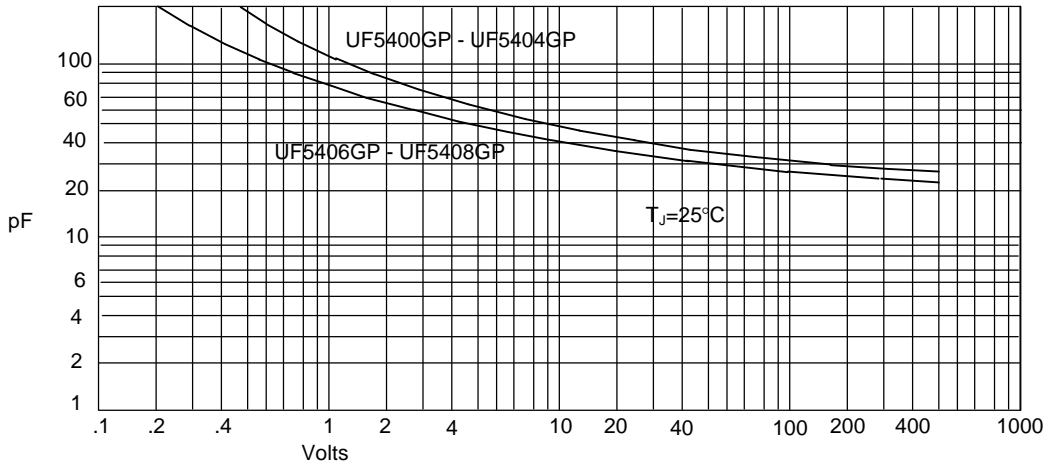
Instantaneous Forward Current - Amperes *versus*
Instantaneous Forward Voltage - Volts

Figure 2
Forward Derating Curve



Average Forward Rectified Current - Amperes *versus*
Ambient Temperature - °C

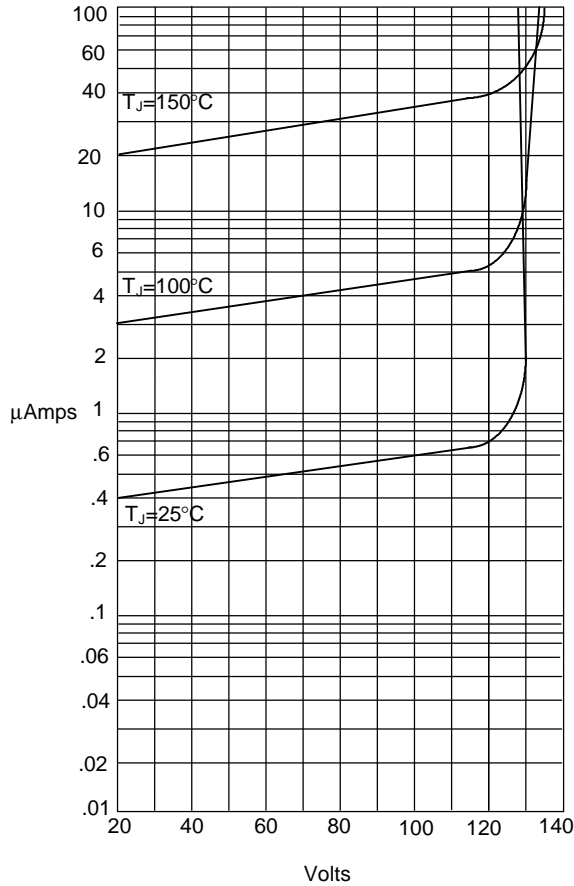
Figure 3
Junction Capacitance



Junction Capacitance - pF *versus*
Reverse Voltage - Volts

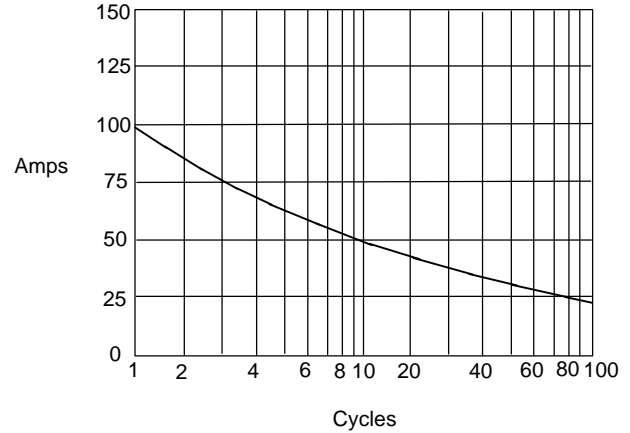
UF5400GP thru UF5408GP

Figure 4
Typical Reverse Characteristics



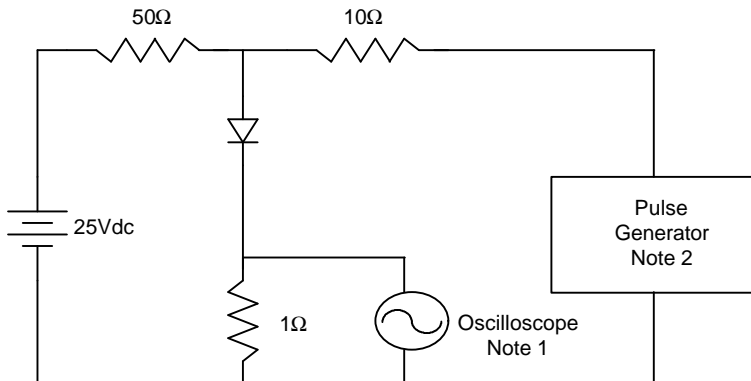
Instantaneous Reverse Leakage Current - MicroAmperes versus
Percent Of Rated Peak Reverse Voltage - Volts

Figure 5
Peak Forward Surge Current



Peak Forward Surge Current - Amperes versus
Number Of Cycles At 60Hz - Cycles

Figure 6
Reverse Recovery Time Characteristic And Test Circuit Diagram



- Notes:
1. Rise Time = 7ns max.
Input impedance = 1 megohm, 22pF
 2. Rise Time = 10ns max.
Source impedance = 50 ohms
 3. Resistors are non-inductive

