

SMT - on ceramic technology  
 Metal case  
 Isolation I/O 500Veff  
 EMI/RFI radiated EN55022-B  
 Short circuit proof  
 100% burn-in and parameter test  
 Switching frequency: 200kHz

# DC/DC Converter SC225

36 Watt

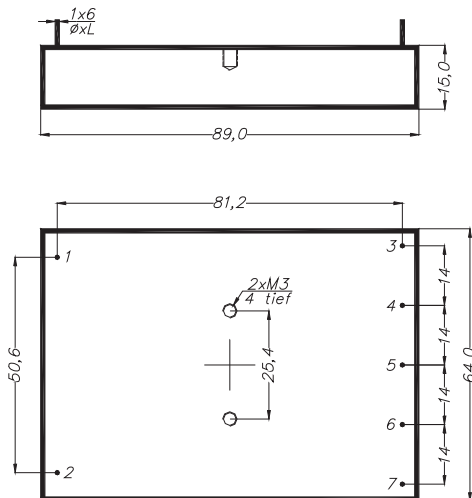
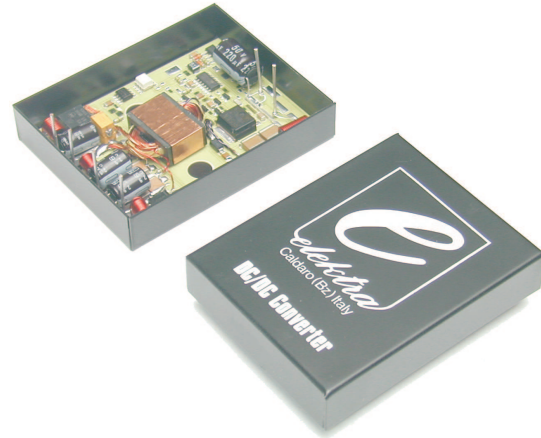
## Electrical specifications (1)

Input voltage ..... 18V ÷ 36V DC

Output voltage (2)..... ±15V  
 Output voltage accuracy ..... ±2%  
 Output current ..... ±1,2A  
 Regulation line (3) ..... ±0,5%  
 Regulation load (4) ..... ±3%  
 Efficiency ..... ca 84%  
 Output ripple (20MHz) ..... 200mVpp  
 Temperature coefficient ..... 0,02%/°C  
 Short circuit protection ..... current limiting

Isolation I/O ..... 500Veff  
 Operating temperature range (case) ..... -25°C ÷ +85°C  
 Storage temperature range ..... -40°C ÷ +105°C

(1) Typical specifications at  $T_a=+25^\circ\text{C}$  under nominal line voltage and full-load conditions, unless otherwise noted.  
 (2) Don't use an output without his ground pin  
 (3)  $U_i \text{ min} \div U_i \text{ max}$   
 (4)  $I_o = 10\% \div 100\%$



## Connections

Pin 1 ..... +Input  
 Pin 2 ..... -Input  
 Pin 3 ..... +Output 1  
 Pin 4 ..... -Output 1  
 Pin 5 ..... +Output 2  
 Pin 6 ..... -Output 2  
 Pin 7 ..... no pin

Production and sales office  
**ELEKTRA srl**  
 Zona Industriale, 3 - 39052 Caldaro (BZ) Italy  
 Tel.: +39 0471 962255 - Fax.: +39 0471 965668  
 http://www.elektra.it - e-mail: info@elektra.it



ISO 9001  
 Registered

Sales office for Germany  
**ELEKTRA REINSTADLER GmbH**  
 Arnbacherstr., 32 - 85247 Schwabhausen Germany  
 Tel.: +49 08138 9161 - Fax.: +49 08138 8484  
 e-mail: elektra.reinstadler@t-online.de

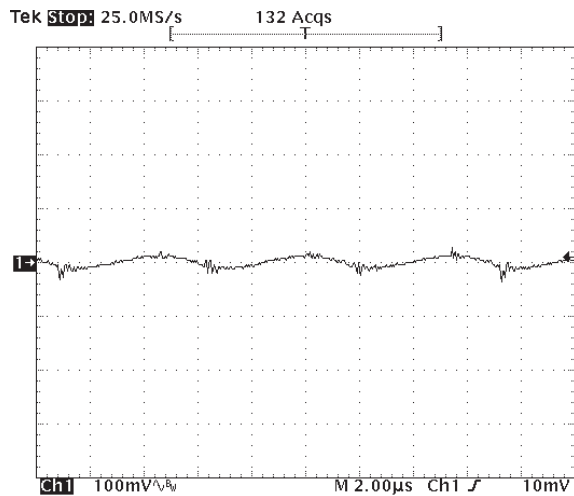
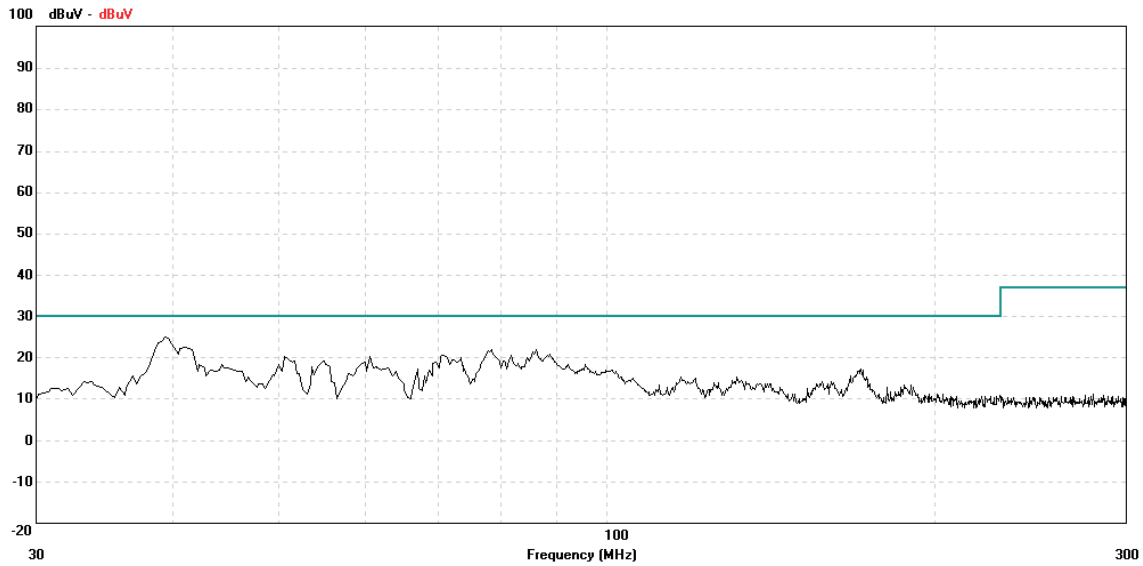
**Conditions:**

Input: 24V  
Output:  $\pm 15V / \pm 1200mA$   
Temperature: 25°C

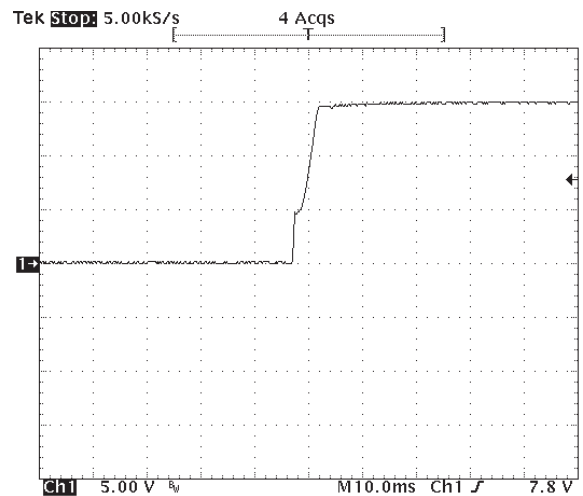
- (1) EMI/RFI radiated EN55022-B
- (2) Output ripple
- (3) Start-up characteristic

# DC/DC Converter SC225

36 Watt



Output ripple @  $U_{IN}=24V, I_{OUT}=\pm 1,2A, T_a=25^\circ C$



Start-up characteristic @  $U_{IN}=24V, I_{OUT}=\pm 1,2A, T_a=25^\circ C$

Date: 05/10/2007 Edition: 1

Production and sales office  
**ELEKTRA srl**  
Zona Industriale, 3 - 39052 Caldaro (BZ) Italy  
Tel.: +39 0471 962255 - Fax: +39 0471 965668  
<http://www.elektra.it> - e-mail: [info@elektra.it](mailto:info@elektra.it)



ISO 9001  
Registered

Sales office for Germany  
**ELEKTRA REINSTADLER GmbH**  
Arnbacherstr., 32 - 85247 Schwabhausen Germany  
Tel.: +49 08138 9161 - Fax: +49 08138 8484  
e-mail: [elektra.reinstadler@t-online.de](mailto:elektra.reinstadler@t-online.de)

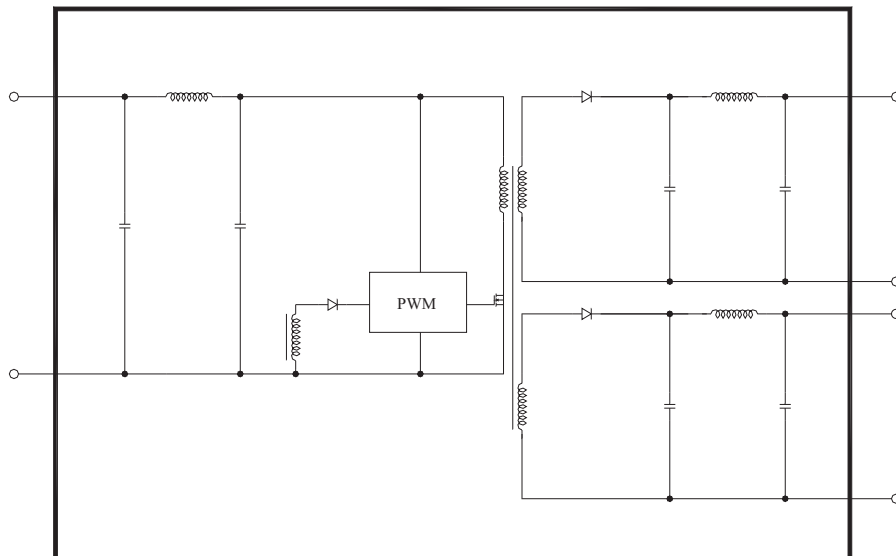
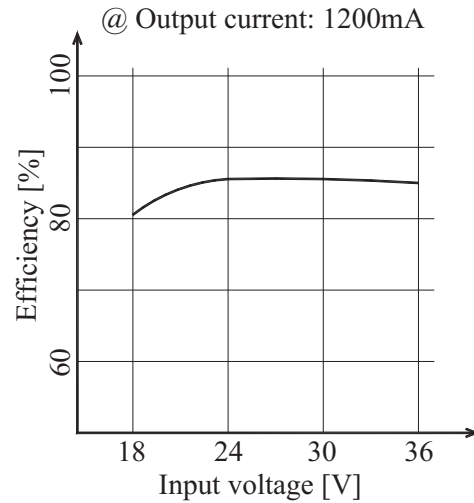
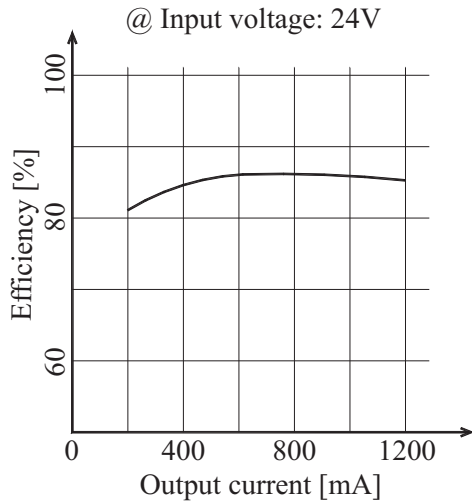
**Conditions:**

Temperature: 25°C

- (1) Efficiency vs Output current
- (2) Efficiency vs Input voltage
- (3) Block diagram

# DC/DC Converter SC225

36 Watt



Production and sales office  
**ELEKTRA srl**  
Zona Industriale, 3 - 39052 Caldaro (BZ) Italy  
Tel.: +39 0471 962255 - Fax: +39 0471 965668  
<http://www.elektra.it> - e-mail: [info@elektra.it](mailto:info@elektra.it)



ISO 9001  
Registered

Sales office for Germany  
**ELEKTRA REINSTADLER GmbH**  
Arnbacherstr., 32 - 85247 Schwabhausen Germany  
Tel.: +49 08138 9161 - Fax: +49 08138 8484  
e-mail: [elektra.reinstadler@t-online.de](mailto:elektra.reinstadler@t-online.de)