

GENERAL PURPOSE VIDEO FILTERS

SL...A SERIES STEEPNESS FACTOR 1.40

This range of 7-pole Elliptical Function Low Pass Filters is intended for bandwidth limitation with minimal distortion of the transmitted signal. The filters are corrected for Group Delay distortion over approx. 92% of the passband and for loss distortion over the entire passband. Degradation of a composite video signal is minimal when a 4.5 MHz or 5.5 MHz filter is selected for a 525 or 625 line T.V. system. Specifically the 14.0 MHz filter has become popular in COFDM systems to band limit 8.0 MHz signals centred on 9.143 MHz.

| Order Code | End of Passband MHz | Start of Stopband MHz | Group Delay Ripple ns max | Delay Time ns |
|------------|------------------------|--------------------------|------------------------------|------------------|
| SL0200A | 2.00 | 2.80 | 40 | 785 |
| SL0250A | 2.50 | 3.50 | 30 | 628 |
| SL0300A | 3.00 | 4.20 | 25 | 523 |
| SL0350A | 3.50 | 4.90 | 25 | 448 |
| SL0400A | 4.00 | 5.60 | 20 | 392 |
| SL0450A | 4.50 | 6.30 | 20 | 349 |
| SL0500A | 5.00 | 7.00 | 15 | 314 |
| SL0550A | 5.50 | 7.70 | 15 | 285 |
| SL0600A | 6.00 | 8.40 | 15 | 262 |
| SL0650A | 6.50 | 9.10 | 12 | 242 |
| SL0700A | 7.00 | 9.80 | 12 | 224 |
| SL0750A | 7.50 | 10.50 | 10 | 209 |
| SL0800A | 8.00 | 11.20 | 10 | 196 |
| SL0850A | 8.50 | 11.90 | 10 | 185 |
| SL0900A | 9.00 | 12.60 | 10 | 174 |
| SL0950A | 9.50 | 13.20 | 10 | 165 |
| SL1000A | 10.00 | 14.00 | 10 | 157 |
| SL1400A | 14.00 | 19.60 | 8 | 115 |

This range may be extended down to 0.5 MHz and up to 20 MHz. Filters with other end of passband frequencies within the range can be supplied at no extra cost.

Order as SL****A inserting the frequency required in place of the asterisk eg for 5.23 MHz SL0523A.

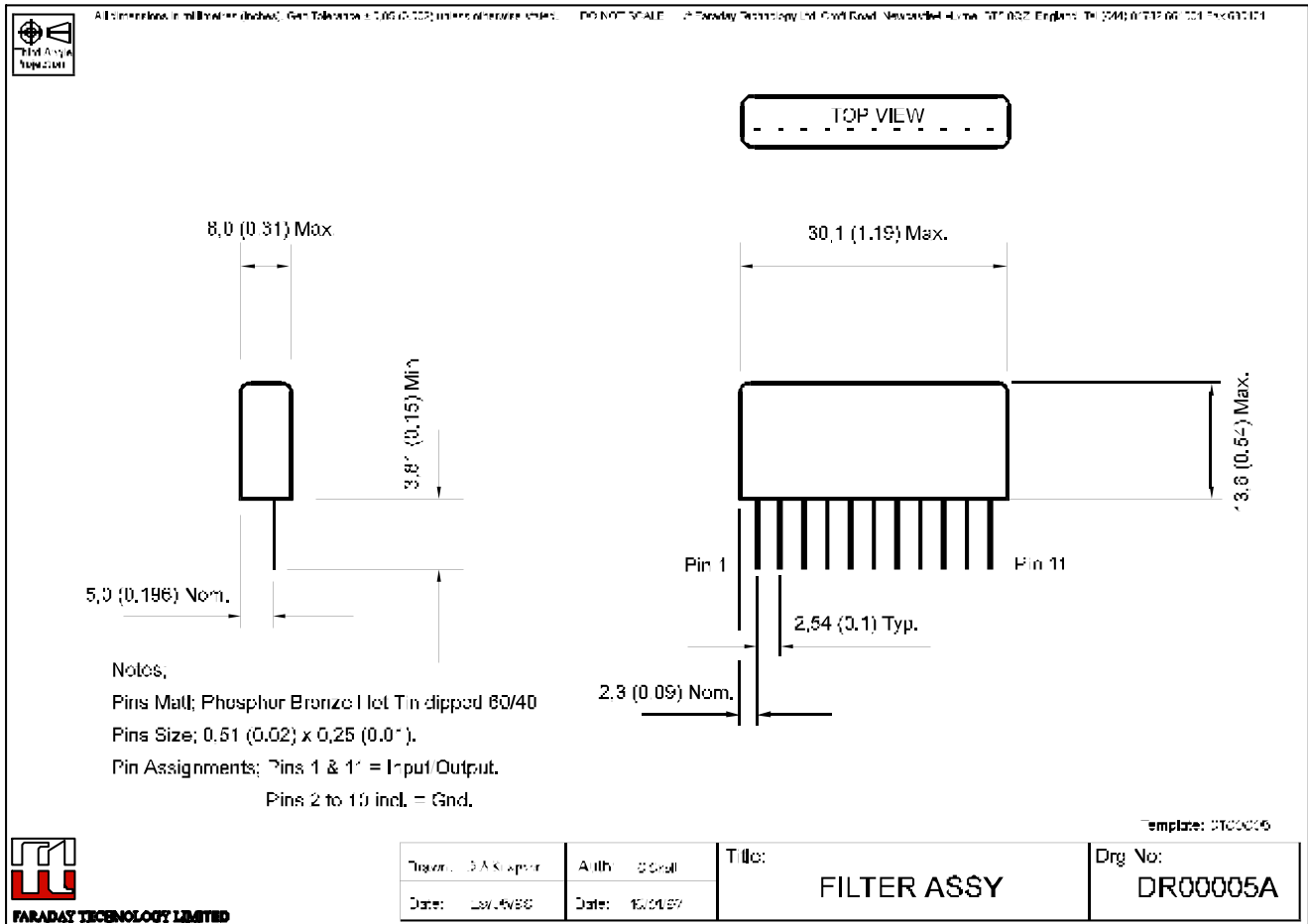
| | | |
|------------|---|----------|
| Other data | <i>Impedance</i> | 75 ohms |
| | <i>Insertion Loss</i> | < 1.5 dB |
| | <i>Stopband attenuation wrt 100 kHz</i> | > 40 dB |
| | <i>Amplitude ripple in passband</i> | < 0.3 dB |
| | <i>Video performance for filters of 5.0 MHz (4.5 MHz for 525 line) and above.</i> | |
| | <i>Pulse and bar: K - rating</i> | < 1 % |
| | <i>Luminance/Chrominance Gain inequality (20T)</i> | < 3 % |

© Faraday Technology. As part of continual product improvement the specifications, details and dimensions shown in this publication are subject to change without notice

PACKAGE DETAIL

| | |
|---|----------|
| <i>Luminance/Chrominance Delay inequality</i> | < 10 ns |
| <i>Aqueous Washable</i> | Yes |
| <i>Package</i> | DR00005A |

PACKAGE DETAIL



Faraday Technology Ltd.
 Croft Road Industrial Estate,
 Newcastle, Staffordshire
 ST5 0QZ, England.
 FARA043d

Tel: + 44 (0)1782 661501
 Fax: + 44 (0)1782 630101
 Email: sales@faradaytech.co.uk
 Web site: http://www.faradaytech.co.uk
 Aug-05(B)