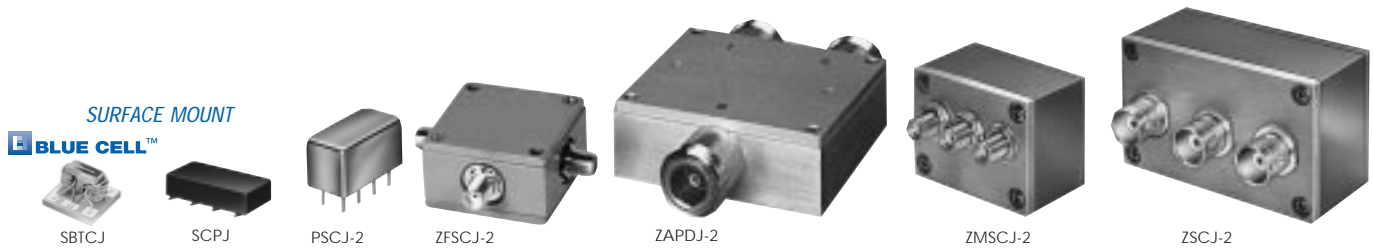


POWER SPLITTERS/COMBINERS

50 & 75Ω

2 WAY-180° 10 kHz to 2 GHz



| MODEL NO. | FREQ. RANGE MHz f_L - f_U | ISOLATION dB | | | INSERTION LOSS, dB Above 3dB | | | PHASE UNBALANCE Degrees | | | AMPLITUDE UNBALANCE dB | | | CASE STYLE Note B | CONNECTION PL- | PCB Lay-out Qty. (10-49) | PRICE \$ |
|-------------------|----------------------------------|----------------|-----------------------------|----------------|---------------------------------|-----------------------------|----------------|-------------------------|------------------------|-----------|------------------------|------------------------|-----------|----------------------|-------------------|-----------------------------|----------|
| | | L Typ. Min. | M ^o Typ. Min. | U Typ. Min. | L Typ. Max. | M ^o Typ. Max. | U Typ. Max. | L Max. | M ^o Max. | U Max. | L Max. | M ^o Max. | U Max. | | | | |
| NEW ♦ SBTCJ-1W | 1-750 | 23 | 20 | 24 | 0.6 | 1.7 | 0.9 | 3 | 7 | 10 | 0.2 | 0.4 | 0.9 | AT790 | nk | 117 | 10.95 |
| SCPJ-2-9 | 200-900 | | 24 | 17 | | | 1.0 | 1.8 | | | | 0.7 | | YY161 | az | 060 | 28.95 |
| SCPJ-2-750 | 30-750 | 24 | 18 | 21 | 0.7 | 1.5 | 1.5 | 2.2 | 1.5 | 2.2 | 0.8 | 0.8 | 0.8 | YY161 | az | 060 | 27.95 |
| ■ SCPJ-2-1W-75 | 10-500 | 30 | 25 | 27 | 1.0 | 1.5 | 1.1 | 1.6 | 1.5 | 2.2 | 0.3 | 0.5 | 0.9 | YY161 | az | 121 | 26.95 |
| **■ SCPJ-2-750-75 | 30-750 | 26 | 20 | — | 1.0 | 1.5 | — | — | 1.5 | 2.2 | 0.8 | — | 0.9 | YY161 | az | 121 | 27.95 |
| PSCJ-2-1 | 1-200 | 35 | 30 | 35 | 0.75 | 1 | 0.5 | 0.8 | 0.75 | 1.2 | 0.3 | 0.15 | 0.3 | A01 | az | — | 25.95 |
| PSCJ-2-1W | 100-600 | | 30 | 20 | | | 1.0 | 1.9 | | | | 0.5 | | A06 | az | — | 28.95 |
| ⊕ PSCJ-2-2 | 0.01-20 | 35 | 25 | 30 | 0.3 | 0.8 | 0.2 | 0.5 | 0.3 | 0.6 | 1* | 2 | 2.5 | A01 | az | — | 36.95 |
| ■ PSCJ-2-1-75 | 1-200 | 35 | 30 | 31 | 0.6 | 1.2 | 0.8 | 1.2 | 1.2 | 1.8 | 2 | 4 | 6 | A01 | az | — | 25.95 |
| ZFSCJ-2-1 | 1-500 | 30 | 20 | 33 | 1 | 1.5 | 1 | 1.5 | 1 | 1.5 | 2 | 4 | 7 | K18 | as | — | 59.95 |
| ▲⊕ ZFSCJ-2-2 | 0.01-20 | 35 | 25 | 30 | 0.3 | 0.8 | 0.2 | 0.5 | 0.3 | 0.6 | 1* | 2 | 2.5 | K18 | as | — | 57.95 |
| ZFSCJ-2-3 | 5-300 | 30 | 20 | 33 | 1 | 1.5 | 1 | 1.5 | 1 | 1.5 | 2 | 4 | 6 | K18 | as | — | 49.95 |
| ▲ ZFSCJ-2-4 | 50-1000 | 30 | 20 | — | 1.2 | 1.9 | — | — | 1.6 | 2.4 | 6 | — | 7 | K18 | as | — | 69.95 |
| ZMSCJ-2-1 | 1-200 | 35 | 30 | 35 | 0.75 | 1 | 0.6 | 0.8 | 0.75 | 1.2 | 0.3 | 0.15 | 0.3 | M21 | at | — | 57.95 |
| ⊕ ZMSCJ-2-2 | 0.01-20 | 35 | 25 | 30 | 0.3 | 0.8 | 0.2 | 0.5 | 0.3 | 0.6 | 1* | 2 | 2.5 | M21 | at | — | 67.95 |
| ZSCJ-2-1 | 1-200 | 35 | 30 | 35 | 0.75 | 1 | 0.6 | 0.8 | 0.75 | 1.2 | 0.3 | 0.15 | 0.3 | M22 | at | — | 51.95 |
| ⊕ ZSCJ-2-2 | 0.01-20 | 35 | 25 | 30 | 0.3 | 0.8 | 0.2 | 0.5 | 0.3 | 0.6 | 1* | 2 | 2.5 | M22 | at | — | 59.95 |
| ZAPDJ-2 | 1000-2000 | 22 | 18 | 22 | 1.3 | 1.8 | 1.3 | 1.8 | 1.3 | 1.8 | 6 | 6 | 6 | F53 | as | — | 71.95 |

L = low range [f_L to 10 f_L]

M = mid range [10 f_L to $f_U/2$]

U = upper range [$f_U/2$ to f_U]

NOTES:

- ♦ Aqueous washable
- Non-hermetic
- * Phase unbalance is 3 degrees max from f_L to 3 f_L .
- ** For SCPJ-2-750-75: L=30-375 MHz, U=375-750 MHz
- ⊕ When only specification for M range given, specifications applied to entire frequency range.
- Denotes 75 Ohm model, for coax connector models
75 Ohm BNC connectors are standard.
- ▲ Available only with SMA connectors.
- ⊕ At low range frequency band (f_L to 10 f_L), linearly derate maximum input power by 13 dB.
- A. General Quality Control Procedures, Environmental Specifications, Hi-Rel and MIL description are given in section 0, see "Mini-Circuits Guarantees Quality" article.
- B. Connector types and case mounted options, case finishes are given in section 0, see "Case styles & Outline Drawings".
- C. Prices and specifications subject to change without notice.
- 1. Absolute maximum power, voltage and current ratings:
 - 1a. Matched power rating 1 Watt
except models PSCJ-2-1W, SCPJ-2-1W-75,
SCPJ-2-750, SCPJ-2-750-75, AMT-2, SBTCJ-1W 0.5 Watt
 - 1b. Internal load dissipation 0.125 Watt



Distribution Centers NORTH AMERICA 800-654-7949 • 417-335-5935 • Fax 417-335-5945 • EUROPE 44-1252-832600 • Fax 44-1252-837010

INTERNET <http://www.minicircuits.com>

P.O. Box 350166, Brooklyn, New York 11235-0003 (718) 934-4500 Fax (718) 332-4661

ISO 9001 CERTIFIED

030211

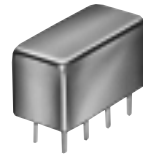
Surface Mount [□], Plug-In & Coaxial

2 Way-0°/180° 5 to 200 MHz

SURFACE MOUNT



AMT



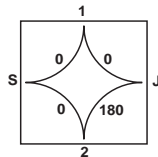
PMT

| MODEL NO. | FREQ. RANGE MHz f_L - f_U | ISOLATION dB | | | INSERTION LOSS, dB Above 3dB | | | PHASE UNBALANCE Degrees | | | AMPLITUDE UNBALANCE dB | | | CASE STYLE Note B | NSN QTY. (10) | PRICE \$ | | | | | | |
|-----------|----------------------------------|----------------|-----------------|----------------|------------------------------|-----------------|----------------|-------------------------|------------|-----------|------------------------|------------|-----------|----------------------|------------------|----------|-----|-----|-----|-----|----|-------|
| | | L Typ. Min. | M° Typ. Min. | U Typ. Min. | L Typ. Max. | M° Typ. Max. | U Typ. Max. | L Max. | M° Max. | U Max. | L Max. | M° Max. | U Max. | | | | | | | | | |
| AMT-2 | 50-200 | | 35 | 20 | | 0.8 | 1.2 | | 2 | | 0.3 | | CD636 | ls | 12.95 | | | | | | | |
| PMT-1 | 5-200 | 22 | 20 | 24 | 20 | 24 | 18 | 0.8 | 1.0 | 0.9 | 1.1 | 1.0 | 1.5 | 2 | 4 | 8 | 0.1 | 0.2 | 0.5 | A04 | ba | 21.95 |

L = low range [f_L to $10 f_L$]

M = mid range [$10 f_L$ to $f_U/2$]

U = upper range [$f_U/2$ to f_U]



- S-J ports, isolation 40 dB typical
- Inphase ports, S-1 and S-2, insertion loss 0.2 dB typical
- Amplitude unbalance defined by input S or J ports to output 1 and 2

pin and coaxial connections

see case style outline drawing

| PORT | as | at | az | ba | ls | nk |
|------------|----|----|-----------|---------|-----|--------|
| SUM PORT | S | 2 | 1 | 1 | 3 | 6 |
| PORT 1 | 1 | 1 | 5 | 2 | 6 | 1 |
| PORT 2 | 2 | 3 | 6 | 3 | 4 | 3 |
| PORT J | — | — | — | 4 | 1 | — |
| GND EXT. | — | — | 2,3,4,7,8 | 5,6,7,8 | 2,5 | 2,4 |
| CASE GND | — | — | 2,3,4,7,8 | 5,6,7,8 | — | — |
| NOT USED | — | — | — | — | — | 5 |
| DEMO BOARD | — | — | TB-228 | — | — | TB-227 |

NSN GUIDE

| MCL NO. | NSN |
|----------|------------------|
| PSCJ-2-1 | 6625-01-413-2386 |
| PSCJ-2-2 | 5985-01-332-3084 |
| ZSCJ-2-2 | 5895-01-340-7761 |



The Design Engineers Search Engine

Provides Actual Data Instantly
At: <http://www.minicircuits.com>

In Stock... Immediate Delivery

For Custom Versions Of Standard Models
Consult Our Applications Dept.



030211