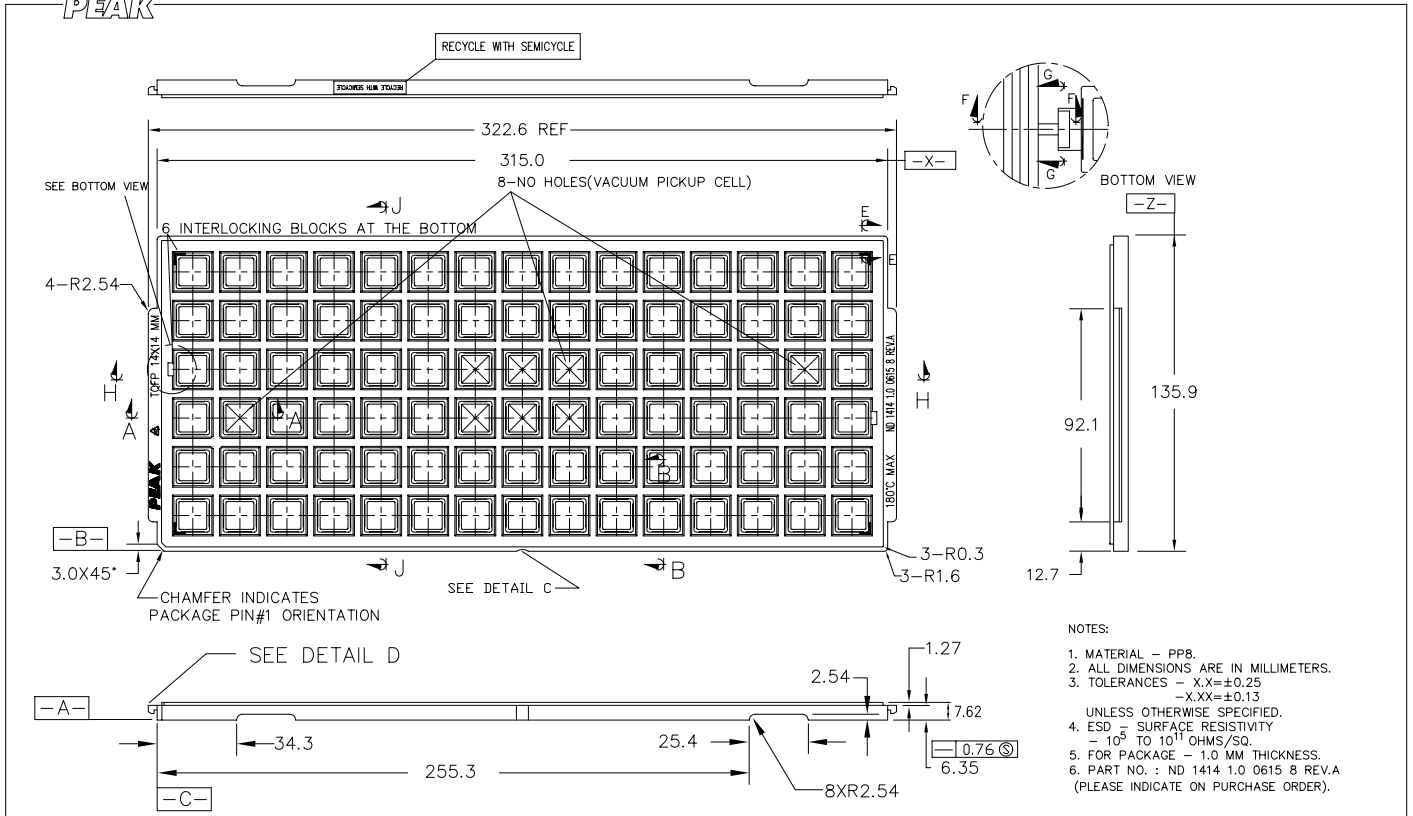
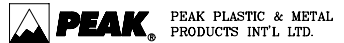


PEAK



NOTES:

1. MATERIAL - PP8.
2. ALL DIMENSIONS ARE IN MILLIMETERS.
3. TOLERANCES - X.XX=±0.25  
-X.XX=±0.13  
UNLESS OTHERWISE SPECIFIED.
4. ESD = SURFACE RESISTIVITY  
- 10<sup>5</sup> TO 10<sup>11</sup> OHMS/SQ.
5. FOR PACKAGE - 1.0 MM THICKNESS.
6. PART NO. : ND 1414 1.0 0615 8 REV.A  
(PLEASE INDICATE ON PURCHASE ORDER).



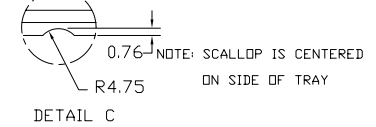
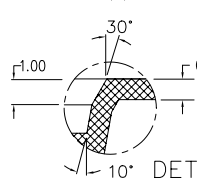
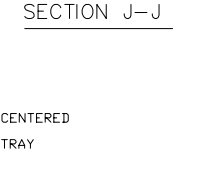
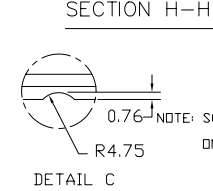
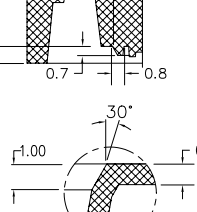
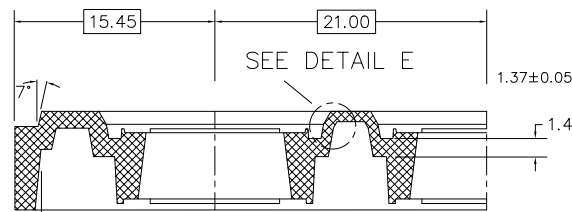
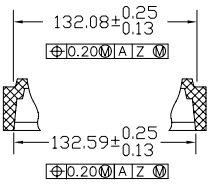
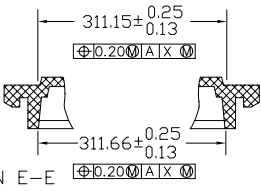
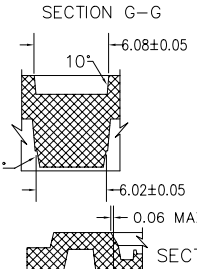
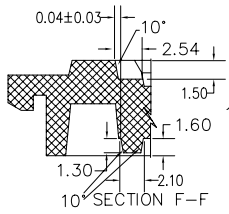
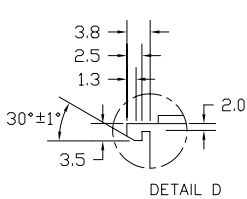
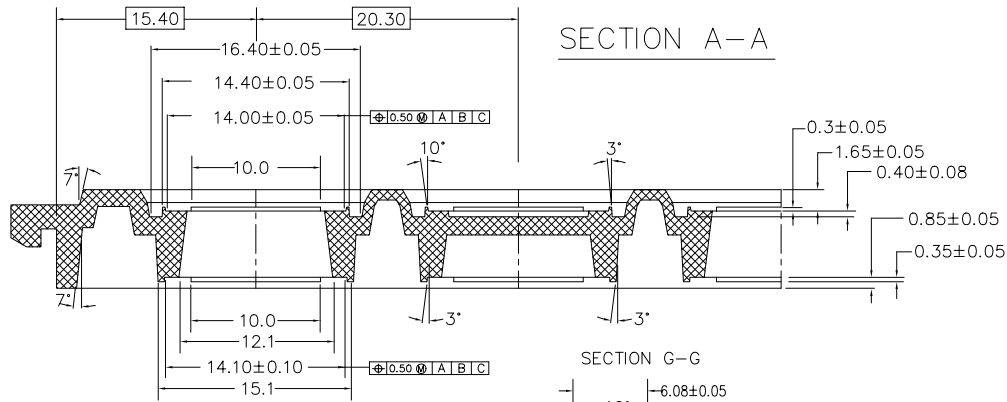
REV.NO.	ECH #	DESCRIPTION	DATE
13	P-00890	CHANGE SURFACE RESISTIVITY	1 FEB 99
12	P-00773	ADD RUNNER GATE	28 SEP 98
11	P-00611	CHANGE POSITIONAL TOL	21 AUG 97
10	P-00548	DELETED "ASSEMBLED IN SINGAPORE"	2 SEP 95
9	P-00457	CHANGE "LOW TEMP." TO "FSC MAX."	12 JAN 95
8	P-00344	CHANGE LOGO & ADD PPE DRAWING	6 JUL 94

THIS DOCUMENT CONTAINS INFORMATION PROPRIETARY TO PEAK PLASTIC & METAL PRODUCTS INTERNATIONAL LIMITED. REPRODUCTION, DISCLOSURE OR USE OF THIS DOCUMENT IS EXPRESSLY PROHIBITED EXCEPT IF OTHERWISE AGREED UPON IN WRITING.

DRAWN BY :	Wang	PAGE 1 OF 2
CHECKED BY :		DATE : 1 FEB 99
APPROVED BY :		DATE : 1 FEB 99
DO NOT SCALE DRAWING		DATE : 1 FEB 99
		CODE : CSA00602

CUSTOMER :	PEAK
TITLE :	ND 1414 1.0 0615 8 REV.A
DWG NO.:	ND 1414 1.0 0615 8 REV.A
REV. 13	

PEAK



**PEAK** PEAK PLASTIC & METAL PRODUCTS INT'L LTD.

REV.NO.	ECH #	DESCRIPTION	DATE
13	P-00890	CHANGE SURFACE RESISTIVITY	1 FEB 99
12	P-00773	ADD RUNNER GATE	28 SEP 98
11	P-00611	CHANGE POSITIONAL TOL	21 AUG 97
10	P-00548	DELETED "ASSEMBLED IN SINGAPORE"	2 SEP 95
9	P-00457	CHANGE TOW TEMP. TO 75°C MAX.	12 JAN 95
8	P-00344	CHANGE LOGO & ADD PPE DRAWING	6 JUL 94

THIS DOCUMENT CONTAINS INFORMATION PROPRIETARY TO PEAK PLASTIC & METAL PRODUCTS INTERNATIONAL LIMITED. REPRODUCTION, DISCLOSURE OR USE OF THIS DOCUMENT IS EXPRESSLY PROHIBITED EXCEPT IF OTHERWISE AGREED UPON IN WRITING.

DRAWN BY : Wang	PAGE 2 OF 2
CHECKED BY :	DATE : 1 FEB 99
APPROVED BY :	DATE : 1 FEB 99
DO NOT SCALE DRAWING	CODE : CSA00602

CUSTOMER :	<b>PEAK</b>
TITLE :	ND 1414 1.0 0615 8 REV.A
DWG NO.:	ND 1414 1.0 0615 8 REV.A
REV. 13	