



Spec. No.	PS-N329SW4-A0R
Rev.	A

PRODUCT SPECIFICATION

Model No: CSPR-N329SW4-A0R

Descriptions:
<ul style="list-style-type: none"> • LED Type : Superbright Lamp • LED Package : Piranha LED Lamp • Emitting Color : White • Viewing Angle : 50° • Stopper



CUSTOMER APPROVED SIGNATURES	APPROVED BY	CHECKED BY	PREPARED BY

CHINA SEMICONDUCTOR CORPORATION
Address:2FL. NO.909,Chung-Cheng Road,
Chung-Ho City Taipei Hsien,Taiwan.

Tel:886-2-2223-9696
Fax:886-2-2223-9377

OPTO PLUS TECHNOLOGIES CO.,LTD
Address:696 Shun jiang Rd.,Ji Shan St.Shaoxing,
ZheJiang,China

Tel:86-0575-88623888
Fax:86-0575-88623112



Spec. No.	PS-N329SW4-A0R
Rev.	A

Model No: CSPR-N329SW4-A0R

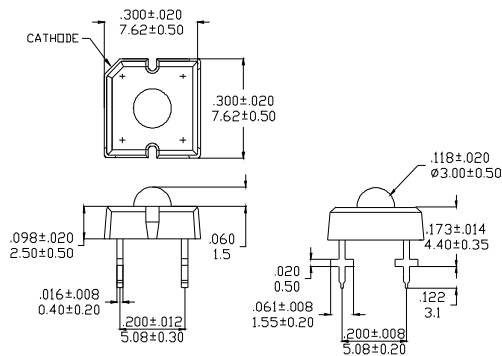
Features -

1. High Current Operation
2. High Luminous Output
3. High Reliability and Solid
4. Optimal Optical/Mechanical Design
5. Packaged in Tubes for Use with Automatic Pick and Place Equipment
6. Rohs Compliant

Device Selection Guide -

Part No.	Chip		LED Lens
	Material	Emitted Color	
CSPR-N329SW4-A0R	InGaN	White	Water Transparent

Package Outline Dimensions -



* Tolerance : $\pm 0.25[0.01]$ Unit : \pm inch[mm]



Model No: CSPR-N329SW4-A0R

■ Absolute Maximum Rating -

(Ta=25°C)

Parameter	Symbol	Rating	Unit
Power Dissipation	Pd	120	mW
Forward Current (DC)	IF	40	mA
Peak Forward Current *	IFP	100	mA
Reverse Voltage	VR	5	V
Operating Temp.	Topr	-30 ~ +80	°C
Storage Temp.	Tstg	-40 ~ +100	°C
Lead Soldering Temperature	Tsol	Max. 260°C for 5 sec Max. (3mm from the epoxy bulb)	

* Pulse width ≤ 0.1 msec. duty $\leq 1/10$

■ Electro-optical Characteristics -

(Ta=25°C)

Parameter	Symbol	Min.	Typ.	Max.	Unit	Condition
Forward Voltage	VF	-----	3.5	4.0	V	IF=30mA
Luminous Flux	Φv	3000	5000	-----	mlm	
Chromaticity	X	-----	0.31	-----	-----	
Coordination	Y	-----	0.32	-----	-----	
Viewing Angle	2θ 1/2	-----	50	-----	deg	
Reverse Current	IR	-----	-----	50	μA	VR=5V



■ Luminous Flux Rank Limits ($I_f = 30\text{mA}$)

unit : mlm

Part No. Code	CSPR-N329SW4-A0R	
	min.	max.
F	3000	3500
G	3500	4000
H	4000	5000
J	5000	6000
K	6000	7000

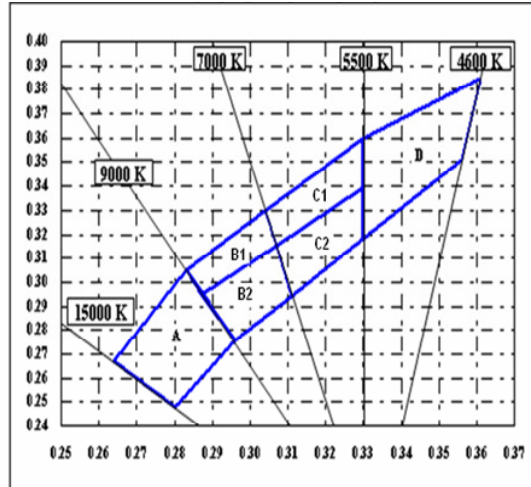
■ Color Rank Limits ($I_f = 30\text{mA}$)

Rank A Color Temperature:9000-15000K										
A										
X	0.20	0.264	0.283	0.296	0.28					
Y	0.248	0.267	0.305	0.276	0.248					

Rank B Color Temperature:7000-9000K											
B1					B2						
X	0.287	0.283	0.304	0.307	0.287	X	0.296	0.287	0.307	0.311	0.296
Y	0.295	0.305	0.33	0.315	0.295	Y	0.276	0.295	0.315	0.294	0.276

Rank C Color Temperature:5500-7000K											
C1					C2						
X	0.307	0.304	0.33	0.33	0.307	X	0.311	0.307	0.33	0.33	0.311
Y	0.315	0.33	0.36	0.339	0.315	Y	0.294	0.315	0.339	0.318	0.294

Rank D Color Temperature:4600-5500K										
D1					D2					
X	0.33	0.33	0.361	0.356	0.33					
Y	0.318	0.36	0.385	0.351	0.318					



■ Forward Voltage Rank Limits ($I_f = 30\text{mA}$)

unit : V

Part No. Code	CSPR-N329SW4-A0R	
	min.	max.
J	3.0	3.2
K	3.2	3.4
L	3.4	3.6
M	3.6	3.8
N	3.8	4.0

Notes:

1. Tolerance of measurement of luminous Flux :±15%
2. Tolerance of measurement of Color Coordinates :±0.01
3. Tolerance of measurement of forward voltage :±0.05v
4. All data are measured by CSC's test equipment.
5. One delivery will include several color rank, VF rank and Iv ranks of the products.
6. The quantity-ratio of the ranks is decided by CSC.
7. Please confirm with CSC salesman, if your request different from standard specification.



Model No: CSPR-N329SW4-A0R

Typical Electrical / Optical Characteristics Curves -

($T_a = 25^\circ\text{C}$ Unless Otherwise Noted)

Fig 1. Forward Current Vs. Forward Voltage

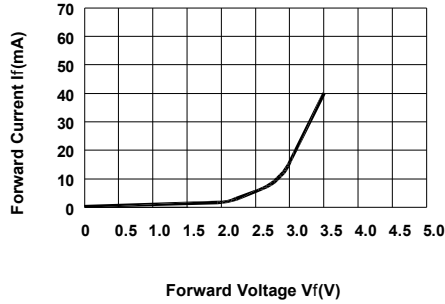


Fig 2. Relative Luminous Flux Vs. Forward Current

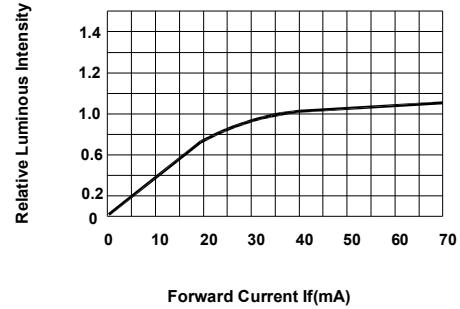


Fig 3. Forward Current Vs. Ambient Temperature
($R_\theta j-a=300^\circ\text{C/W}$)

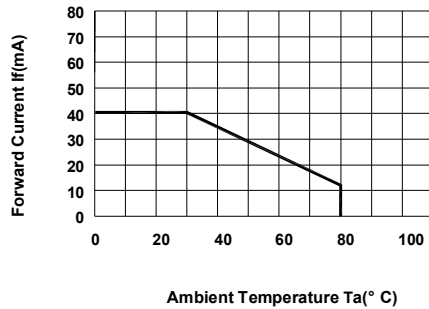


Fig 4. Relative Intensity Vs. Wavelength

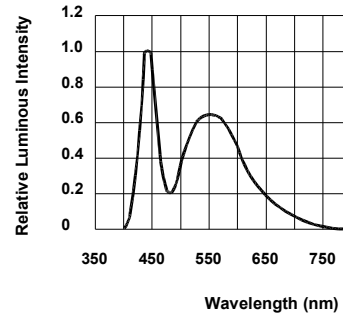
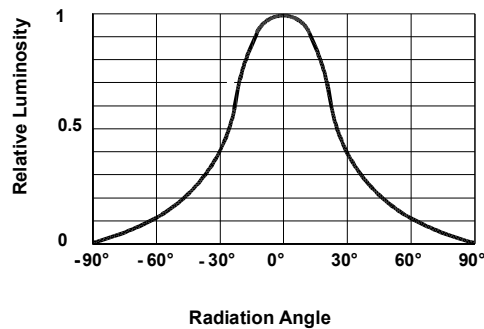


Fig 5. Radiation Diagram



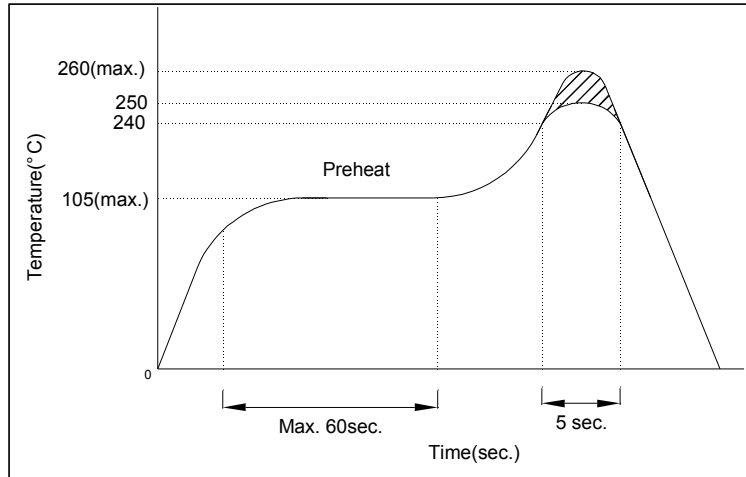


Model No: CSPR-N329SW4-A0R

■ **Precautions For Use -**

1. Recommended Soldering conditions

Wave Soldering



2. Soldering Iron

Basic SPEC. is $\leq 5\text{sec.}$ When 260°C . If temperature is higher, time should be shorter ($+10^{\circ}\text{C} \rightarrow -1\text{sec.}$). Power dissipation of iron should be smaller than 15W, and temperature should be controllable. Surface temperature of the device should be under 230°C .

3. Static Electricity

- a. Static electricity or surge voltage damages LEDs..
It is recommended that a wrist band or an anti-electrostatic glove be used when handling the LEDs.
- b. All devices, equipment and machinery must be properly grounded. It is recommended that measures be taken against surge voltage to the equipment that mounts the LEDs.

■ **Revision History**

Rev. NO	Date	Change Description
A	2009-7-28	

CSC has the right to update the information without notice, Please confirm with CSC salesman for the latest version.