

PLEASE CHECK WWW.MOLEX.COM FOR LATEST PART INFORMATION

Part Number: [0015923040](#)
Status: **Active**
Description: IDT RECEPTACLE MS716603040

Documents:

[3D Model](#) [RoHS Certificate of Compliance \(PDF\)](#)
[Drawing \(PDF\)](#)

Agency Certification

CSA LR19980
 UL E29179

General

Product Family IDT and Solder Connectors
 Series [71660](#)
 Crimp Quality Equipment Yes
 Product Name EBBI™

Physical

Circuits (Loaded) 40
 Circuits (maximum) 1
 Color - Resin Black
 Durability (mating cycles max) 2,000
 Flammability 94V-0
 Gender Female
 Glow-Wire Compliant No
 Lock to Mating Part None
 Material - Metal Phosphor Bronze
 Material - Plating Mating Gold
 Material - Plating Termination Tin
 Material - Resin Polyester
 Number of Rows 2
 Packaging Type Tray
 Pitch - Mating Interface (in) 0.050 In
 Pitch - Mating Interface (mm) 1.27 mm
 Plating min: Mating (µin) 30
 Plating min: Mating (µm) 0.75
 Plating min: Termination (µin) 100
 Plating min: Termination (µm) 2.5
 Stackable No
 Temperature Range - Operating -40°C to +105°C
 Termination Interface: Style IDT or Pierce
 Wire Size AWG 30

Electrical

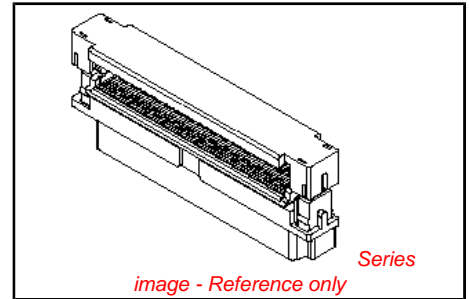
Current - Maximum per Contact 1A
 Voltage - Maximum 30V

Material Info

Old Part Number MS716603040

Reference - Drawing Numbers

Sales Drawing SDA-71660-3***



EU RoHS

ELV and RoHS Compliant
REACH SVHC Contains SVHC: No
Halogen-Free Status Not Reviewed

China RoHS



Need more information on product environmental compliance?

Email productcompliance@molex.com
 For a multiple part number RoHS Certificate of Compliance, [click here](#)

Please visit the [Contact Us](#) section for any non-product compliance questions.

Search Parts in this Series
[71660Series](#)

Application Tooling | FAQ

Tooling specifications and manuals are found by selecting the products below. Crimp Height Specifications are then contained in the Application Tooling Specification document.

Global

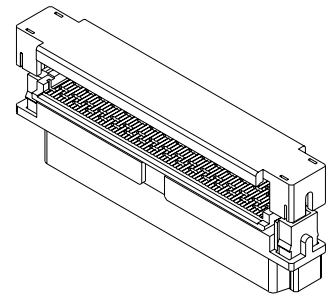
| Description | Product # |
|--------------------|----------------------------|
| IDT - Manual Press | 0622004600 |
| IDT - Manual Press | 0622005500 |

PLEASE CHECK WWW.MOLEX.COM FOR LATEST PART INFORMATION

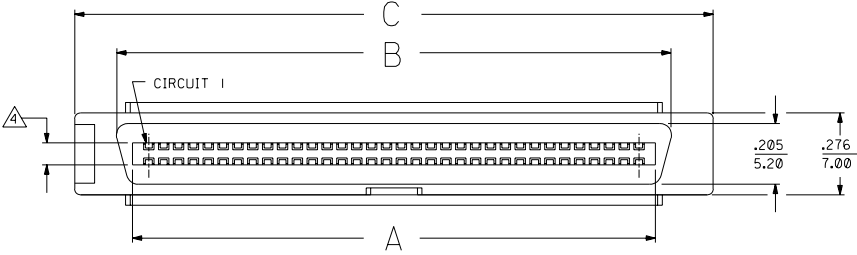
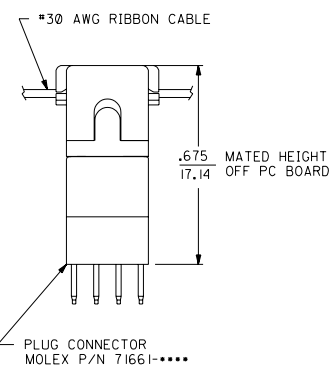
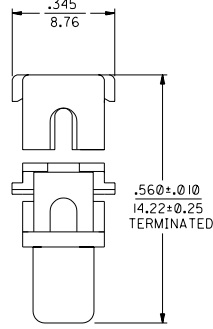
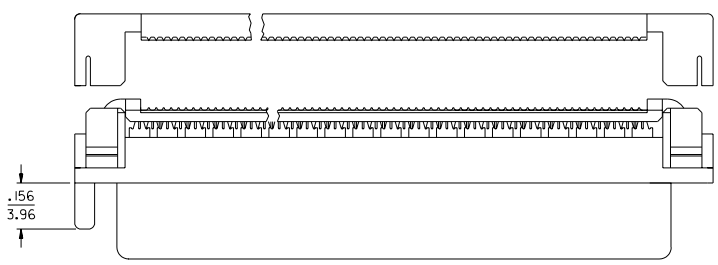
13 12 11 10 9 8 7 6 5 4 3 2 1

NOTES:

- 1) MATERIALS:
HOUSING- LCP, GLASS FILLED, 94V-0, BLACK.
ALIGNER, TERMINATION COVER- POLYESTER, GLASS FILLED, 94V-0, BLACK.
TERMINALS- COPPER ALLOY
- 2) PLATING:
.000030 INCHES GOLD IN SELECTIVE CONTACT AREA OVER
.000050-.000100 INCHES NICKEL IN CONTACT AREA.
.000100-.000200 INCHES TIN IN SOLDER TAIL AREA.
- 3) ASSEMBLY MATES WITH MOLEX P/N SDA-71661-****.
CONFORMS TO PRODUCT SPECIFICATION PS-71660.
- 4) CONNECTOR WILL ACCEPT MATING TO A P.C. BOARD WITH
A THICKNESS OF .062±.003.
- 5) CONNECTOR WILL TERMINATE .025 ϕ FLAT RIBBON CABLE,
#30 AWG STRANDED OR SOLID, PVC INSULATION.
- 6) PRODUCT IS SHIPPED AS A KIT. THE HOUSING/ALIGNER SUB-ASSEMBLY
IS SHIPPED TRAY PACKED. THE TERMINATION COVER IS
SHIPPED BULK PACKED.



68 CIRCUIT AS SHOWN
SCALE- 2:1



PLUG CONNECTOR
MOLEX P/N 71661-****

NOTE FOR LEAD FREE CONVERSION:
THE PRIMARY SHIPPING CARTON WILL BE
LABELED "COMPLIANT TO ROHS DIRECTIVE
2002/95/EC AND ELV ANNEX II OF
DIRECTIVE 2000/53/EC". CARTONS WITHOUT
THIS LABEL MAY CONTAIN PRODUCT WITH
LEAD.

| | |
|---|--|
| J | LEAD FREE CONV ECN UCP2005-0071 PKADAMS 04/07/11 |
| I | REVISE IDT GEOMETRY ECN* UDT2002-1013 DMORGAN 02/02/15 |
| H | REVISED PER UDT 2000-1231 ACHAMMER 00/06/07 |
| G | REVISED PER ECN U61587 7-10-95 RAN |
| F | REVISED PER ECN U60008 7-10-95 RAN |
| E | REVISED PER ECN U51088 5-5-95 RAN |
| D | REVISED PER ECN U50872 2-28-95 RAN |
| C | REVISED PER ECN U50793 2-10-95 RAN |
| B | REVISED PER ECN U50158 3-4-94 RAN |
| A | REVISED PER ECN U21513 10-27-92 RAN |
| I | X-RELEASE PER ECN U21493 10-9-92 RAN |

| | | | | | |
|---------------|---------------|---------------|-----|-------------|--------------------|
| 2.445 (62.10) | 2.166 (55.02) | 2.025 (51.43) | 80 | 015-92-3080 | SDA-71660-3080 |
| 2.145 (54.48) | 1.866 (47.40) | 1.725 (43.81) | 68 | 015-92-3068 | SDA-71660-3068 |
| 1.945 (49.40) | 1.666 (42.32) | 1.525 (38.74) | 60 | 015-92-3060 | SDA-71660-3060 |
| 1.695 (43.05) | 1.416 (35.97) | 1.275 (32.38) | 50 | 015-92-3050 | SDA-71660-3050 |
| 1.445 (36.70) | 1.166 (29.62) | 1.025 (26.04) | 40 | 015-92-3040 | SDA-71660-3040 |
| 1.195 (30.35) | .916 (23.27) | .775 (19.68) | 30 | 015-92-3030 | SDA-71660-3030 |
| C | B | A | CKT | EDP NUMBER | ENGINEERING NUMBER |

MFG. SH. REV. LTR. REVISIONS

REVISIONS ONLY ON CAD SYSTEM

SALES ASSEMBLY
EBBI VERTICAL IDT
RECEPTACLE CONNECTOR

MOLEX INCORPORATED SHEET NO. DATE
U.S.A. 1 OF 1 8/15/92

SEE TABLE SDA-71660-3***

DRG. NO. 69532

DRG. BY: RAN, CAB
CHKD. BY: RAN, CAB
APP'D. BY: CAB
SCALE: 4:1

FILE NAME: S71660X3.DWG

NO DRAWING CONTAINS INFORMATION THAT IS PROPRIETARY TO MOLEX INC. AND SHOULD NOT BE USED WITHOUT WRITTEN PERMISSION.

13 12 11 10 9 8 7 6 5 4 3 2 1