

PLEASE CHECK WWW.MOLEX.COM FOR LATEST PART INFORMATION

Part Number: [0014600198](#)
Status: **Active**
Description: 2.54mm (.100") Pitch SL™ Insulation Displacement Connector Assembly, Female, Single Row, Version D, Back Ribs, Wire Size 24, 3.81µm (150µ") Tin/Lead (SnPb), 19 Circuits

Documents:

[3D Model](#) [Product Specification PS-70400 \(PDF\)](#)
[Drawing \(PDF\)](#) [RoHS Certificate of Compliance \(PDF\)](#)

Agency Certification

CSA LR19980
 UL E29179

General

Product Family Ribbon Cable / Wire Trap Connectors
 Series [70400](#)
 Comments Terminals Preloaded
 Component Type Housing
 Glow-Wire Compliant No
 Product Name SL™

Physical

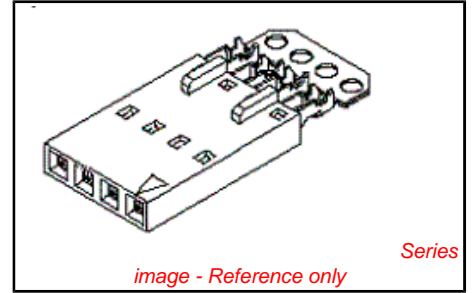
Circuits (Loaded) 19
 Color - Resin Black
 Durability (mating cycles max) 25
 Entry Angle Vertical
 Flammability 94V-0
 Lock to Mating Part None
 Material - Metal Phosphor Bronze
 Material - Plating Mating Tin
 Material - Plating Termination Tin
 Material - Resin Polyester Alloy
 Number of Rows 1
 PCB Retention None
 Packaging Type Tube
 Pitch - Mating Interface (in) 0.100 In
 Pitch - Mating Interface (mm) 2.54 mm
 Plating min: Mating (µin) 150
 Plating min: Mating (µm) 3.75
 Plating min: Termination (µin) 75
 Plating min: Termination (µm) 1.875
 Polarized to Mating Part Yes
 Stackable Yes
 Surface Mount Compatible (SMC) N/A
 Temperature Range - Operating -40°C to +105°C
 Termination Interface: Style IDT or Pierce
 Wire Insulation Diameter 1.35mm (.053") max.
 Wire Size AWG 24
 Wire/Cable Type Discrete Wire, Ribbon Cable

Electrical

Current - Maximum per Contact 3A
 Voltage - Maximum 250V

Material Info

Old Part Number 70400-0088



EU RoHS
ELV and RoHS
Compliant
REACH SVHC
Not Reviewed
Halogen-Free
Status
Not Reviewed

China RoHS



Need more information on product environmental compliance?

Email productcompliance@molex.com
 For a multiple part number RoHS Certificate of Compliance, [click here](#)

Please visit the [Contact Us](#) section for any non-product compliance questions.

Search Parts in this Series
[70400Series](#)

Mates With
[70004](#) Interim Clip (Single Row), [70013](#) Interim Clip (Dual Row)

Use With
[7307](#) Tinned 28AWG, [7767](#) Topcoat 28AWG, [24241](#) Tinned 26AWG, [8996](#) Topcoat 26AWG, [24226](#) Tinned 24AWG, [8997](#) Topcoat 24AWG, [24369](#) High Flex 26AWG, [24389](#) High Flex 24AWG

Application Tooling | [FAQ](#)
Tooling specifications and manuals are found by selecting the products below. Crimp Height Specifications are then contained in the Application Tooling Specification document.

Global

Description	Product #
Hawk Semi-Discrete	0011201337
Automatic Discrete	

Reference - Drawing Numbers

Product Specification
Sales Drawing

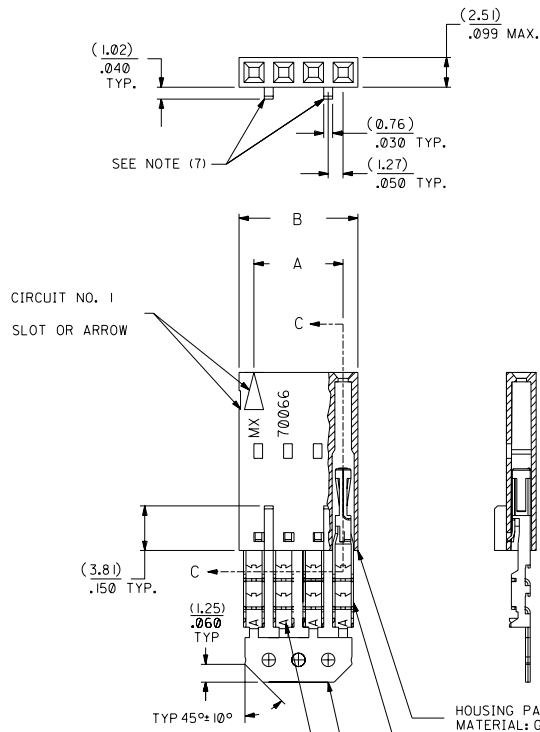
PS-70400
SDA-70400-0071-0094

Wire Terminator for
SL - Rebuilt US*
Hawk™ Ribbon 0623003000
Cable Terminator for
SL without Break-off
Hawk™ Semi- 0623003100
Automatic Discrete
Wire Terminator for
SL
Hawk™ Flat Flex 0623005200
Cable Terminator for
SL with Break-off
Hawk™ Ribbon 0623005300
Cable Terminator
with for SL Break-off
Hawk™ Semi- 0623004900
Automatic Discrete
Wire Terminator
for SL - Rebuilt CE
Approved*

This document was generated on 03/30/2010

PLEASE CHECK WWW.MOLEX.COM FOR LATEST PART INFORMATION

OPTION D



I.D. SLOT CODE TO WIRE GAUGE CHART	
I.D. SLOT CODE	WIRE GAUGE
A	24 AWG.

PLATING CODE (STRIPES ON CARRIER STRIP)	
PLATING	COLOR
TIN	NONE

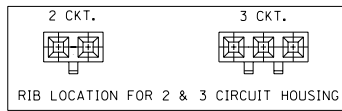
HOUSING PART NO. 700066-****
MATERIAL: G.F. POLYESTER, 94V-0

TERMINAL PART NO. 70028-****
MATERIAL: PHOSPHOR BRONZE
PLATING PER ES-88-***

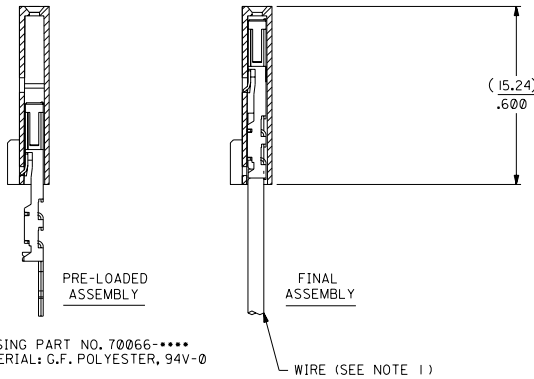
TIN - .000150 MIN. TIN OVER
.000050 MIN. NICKEL PLATE.

NOTES:

- TO BE USED WITH (24) AWG. STRANDED WIRE WITH (1.35)/.053 DIA. MAX. INSULATION.
- SEE CHART FOR CIRCUIT SIZES.
- STANDARD PACKAGING PER PK-70873-0001. OPTIONAL PACKAGING MAY BE AVAILABLE, REQUEST DWG. PK-70400
- PARTS STACKABLE END TO END ON (2.54)/.100 CENTERS.
- REFER TO PRODUCT SPECIFICATION; PS-70400.
- SEE DWG. SDA-70400-**** (SHT. 5) FOR OPTIONAL HOUSING DETAILS.
- 4 CIRCUIT SHOWN. 3 - 25 CKT'S. HAVE (2) RIBS.
- TO MATE WITH MOLEX PART NO.'S: 70004-****, 70013-****
- 2 CIRCUIT ASSEMBLIES SUPPLIED AS GROUPED PAIRS.



SECTION C-C



*THE PRIMARY SHIPPING CARTON WILL BE LABELED 'COMPLIANT TO RoHS DIRECTIVE 2002/95/EC AND ELV ANNEX II OF DIRECTIVE 2000/53/EC'. CARTONS WITHOUT THIS LABEL MAY CONTAIN PRODUCT WITH LEAD.

CKT. SIZE	70400		EDP. NO.	ENG. NO.
	A	B		
2	(2.54) 1.00	(5.05) .199	14-60-0028	A-70400-0071
3	(5.08) .200	(7.59) .299	14-60-0038	A-70400-0072
4	(7.62) .300	(10.13) .399	14-60-0048	A-70400-0073
5	(10.16) .400	(12.67) .499	14-60-0058	A-70400-0074
6	(12.70) .500	(15.21) .599	14-60-0068	A-70400-0075
7	(15.24) .600	(17.75) .699	14-60-0078	A-70400-0076
8	(17.78) .700	(20.29) .799	14-60-0088	A-70400-0077
9	(20.32) .800	(22.83) .899	14-60-0098	A-70400-0078
10	(22.86) .900	(25.37) .999	14-60-0108	A-70400-0079
11	(25.54) 1.000	(27.91) 1.099	14-60-0118	A-70400-0080
12	(27.94) 1.100	(30.45) 1.199	14-60-0128	A-70400-0081
13	(30.48) 1.200	(32.99) 1.299	14-60-0138	A-70400-0082
14	(33.02) 1.300	(35.53) 1.399	14-60-0148	A-70400-0083
15	(35.56) 1.400	(38.07) 1.499	14-60-0158	A-70400-0084
16	(38.01) 1.500	(40.61) 1.599	14-60-0168	A-70400-0085
17	(40.64) 1.600	(43.15) 1.699	14-60-0178	A-70400-0086
18	(43.18) 1.700	(45.69) 1.799	14-60-0188	A-70400-0087
19	(45.72) 1.800	(48.23) 1.899	14-60-0198	A-70400-0088
20	(48.26) 1.900	(50.77) 1.999	14-60-0208	A-70400-0089
21	(50.80) 2.000	(53.31) 2.099	14-60-0218	A-70400-0090
22	(53.34) 2.100	(55.85) 2.199	14-60-0228	A-70400-0091
23	(55.88) 2.200	(58.39) 2.299	14-60-0238	A-70400-0092
24	(58.42) 2.300	(60.93) 2.399	14-60-0248	A-70400-0093
25	(60.96) 2.400	(63.47) 2.499	14-60-0258	A-70400-0094

F		D		DIMENSIONS SHOWN (METRIC) INCH		REVISIONS	
LEAD FREE LCP2004-1769 RWHITE 04/03/17		REVISED PER ECR NO. U82110 10-17-88		DRAFT WHERE APPLICABLE MUST REMAIN WITHIN DIMENSIONS		MFG, SH, REV.	
ADD CARRIER CHAMP ECN #10T1998-0280 05/20/98 LMCGRATH		REVISE PER ECN #U80110 2/3/88 MUM		DINANCE OVERSIZE SPECIFIED TOLERANCES ANGULAR ± 1/2°		ASSEMBLY, SL CONNECTOR (SINGLE ROW - (2.54)/.100 GRID)	
164 PLATING WAS 102 PER ECR # U30941 07/13/93 REED		REDRAWN ON CAD ECR # 9842 5/7/86 W.Z.		INCH METRIC 3 PLACE ± .010 --- 2 PLACE ± .014 ± 0.25 1 PLACE --- ± 0.35		MOLEX INCORPORATED SHEET NO. DATE LITL/EA/L 68532 U.S.A. 10/09/84	
L.T.R. REVISIONS		L.T.R. REVISIONS		SCALE 4:1		SEE CHART SDA-70400-0071-0094	