

PLEASE CHECK WWW.MOLEX.COM FOR LATEST PART INFORMATION

Part Number: [0025021024](#)
Status: **Active**
Description: 2.54mm (.100") Pitch C-Grid® Header, Dual Row, Shrouded, with PC Slot and Guide Ear, 24 Circuits, 0.76µm (30µ") Gold (Au) Selective Plating

Documents:

3D Model	Product Specification PS-70204 (PDF)
Packaging Specification (PDF)	RoHS Certificate of Compliance (PDF)
Drawing (PDF)	

Agency Certification

CSA	LR19980
UL	E29179

General

Product Family	PCB Headers
Series	70204
Application	Board-to-Board
Product Name	C-Grid®

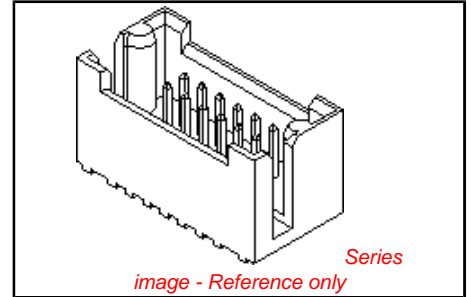
Physical

Breakaway	No
Circuits (Loaded)	24
Circuits (maximum)	24
Durability (mating cycles max)	50
Flammability	94V-0
Glow-Wire Compliant	No
Guide to Mating Part	Yes
Lock to Mating Part	None
Material - Metal	Brass, Phosphor Bronze
Material - Plating Mating	Gold
Material - Plating Termination	Tin
Number of Rows	2
Orientation	Vertical
PC Tail Length (in)	0.110 In
PC Tail Length (mm)	2.79 mm
PCB Locator	No
PCB Retention	None
Packaging Type	Tray
Pitch - Mating Interface (in)	0.100 In
Pitch - Mating Interface (mm)	2.54 mm
Plating min: Mating (µin)	30
Plating min: Mating (µm)	0.75
Plating min: Termination (µin)	75
Plating min: Termination (µm)	1.91
Polarized to Mating Part	Yes
Polarized to PCB	No
Shrouded	Fully
Stackable	No
Temperature Range - Operating	-40°C to +105°C
Termination Interface: Style	Through Hole

Electrical

Current - Maximum per Contact	3A
Voltage - Maximum	250V

Solder Process Data



<p>EU RoHS ELV and RoHS Compliant REACH SVHC Contains SVHC: No Halogen-Free Status Not Reviewed</p>	<p>China RoHS</p>
--	--------------------------

Need more information on product environmental compliance?

Email productcompliance@molex.com
For a multiple part number RoHS Certificate of Compliance, [click here](#)

Please visit the [Contact Us](#) section for any non-product compliance questions.

Search Parts in this Series
[70204Series](#)

Mates With
[71973](#)

Duration at Max. Process Temperature (seconds)	5
Lead-free Process Capability	Wave Capable (TH only)
Max. Cycles at Max. Process Temperature	1
Process Temperature max. C	245

Material Info

Old Part Number	70204-0331
-----------------	------------

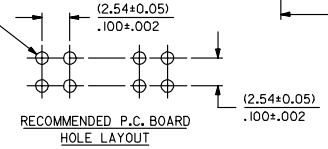
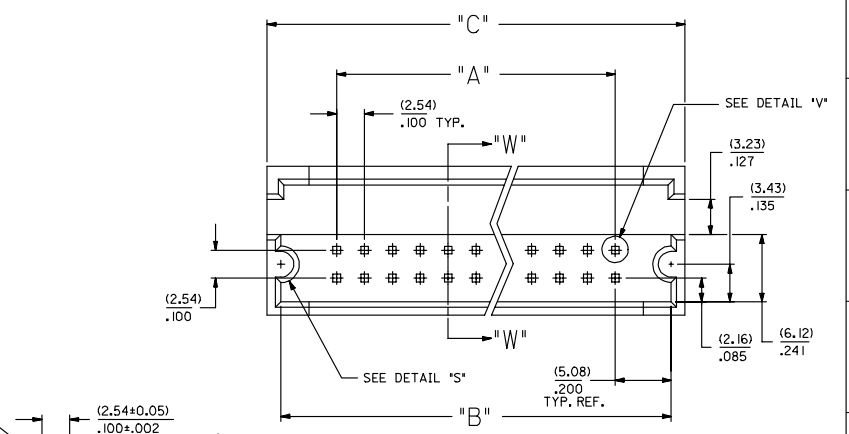
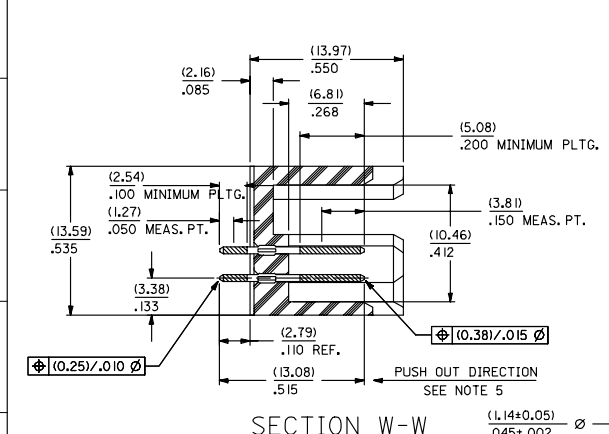
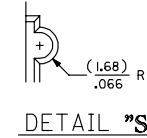
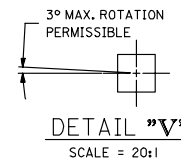
Reference - Drawing Numbers

Product Specification	PS-70204
Sales Drawing	SDA-70204-0321-0384

This document was generated on 03/31/2010

PLEASE CHECK WWW.MOLEX.COM FOR LATEST PART INFORMATION

CKT. SIZE	PART NUMBER	ENG. NUMBER SDA-70204-	DIM. "A"		DIM. "B"		DIM. "C"	
			MM	IN.	MM	IN.	MM	IN.
08	25-02-1008	0323	7,62	.300	17,78	.700	20,32	.800
10	25-02-1010	0324	10,16	.400	20,32	.800	22,86	.900
12	25-02-1012	0325	12,70	.500	22,86	.900	25,40	1,000
14	25-02-1014	0326	15,24	.600	25,40	1,000	32,51	1,100
16	25-02-1016	0327	17,78	.700	27,94	1,100	30,48	1,200
18	25-02-1018	0328	20,32	.800	30,48	1,200	33,02	1,300
20	25-02-1020	0329	22,86	.900	33,02	1,300	35,56	1,400
22	25-02-1022	0330	25,40	1,000	35,56	1,400	38,10	1,500
24	25-02-1024	0331	27,94	1,100	38,10	1,500	40,64	1,600
26	25-02-1026	0332	30,48	1,200	40,64	1,600	43,10	1,700
28	25-02-1028	0333	33,02	1,300	43,10	1,700	45,72	1,800
30	25-02-1030	0334	35,56	1,400	45,72	1,800	48,26	1,900
32	25-02-1032	0335	38,10	1,500	48,26	1,900	50,80	2,000
34	25-02-1034	0336	40,64	1,600	50,80	2,000	53,34	2,100
36	25-02-1036	0337	43,10	1,700	53,34	2,100	55,88	2,200
38	25-02-1038	0338	45,72	1,800	55,88	2,200	58,42	2,300
40	25-02-1040	0339	48,26	1,900	58,42	2,300	60,96	2,400



- NOTES:**
- 1) WAFER MATERIAL: GLASS FILLED NYLON COLOR, BLACK.
 - 2) PIN MATERIAL: PHOSPHOR BRONZE ALLOY
 - 3) PIN PLATING:
TIP: .000030 MINIMUM GOLD IN SELECTED AREA
TAIL: .000075 MINIMUM TIN IN SELECTED AREA
OVER .000050 NICKEL OVER-ALL.
 - *THE PRIMARY SHIPPING CARTON WILL BE LABELED 'COMPLIANT TO ROHS DIRECTIVE 2002/95/EC AND ELV ANNEX II OF DIRECTIVE 2000/53/EC'. CARTONS WITHOUT THIS LABEL MAY CONTAIN PRODUCT WITH LEAD.
 - 4) PINS MUST MEET SOLDERABILITY SPEC. NO. 152.
 - 5) PIN PUSH-OUT FORCE (1.81 KG.)/4 LBS MINIMUM
 - 6) REFER TO P.S. NO. 70204.
 - 7) STANDARD PACKAGING PER: PK-70873-0070.

REMOVE 0356-0384 EC NO. UCP2007-0113 T: DRW: WJORGAN 2006/08/07 CHK: KCS: BARRA 2006/08/18 APPR: S: ILLER 2006/08/28	QUALITY SYMBOLS ▽=0 ▽=0	GENERAL TOLERANCES (UNLESS SPECIFIED)		DIMENSION STYLE		SCALE	DESIGN UNITS	THIRD ANGLE PROJECTION
		mm	INCH	MM/IN	MM/IN	4:1	INCH	
		4 PLACES	± .010	± .010		DRAWN BY	DATE	TITLE
		3 PLACES	± 0.25	± .010		JAS	1986/05/20	SHROUDED HEADER DUAL ROW
		2 PLACES	± .010	± .010		CHECKED BY	DATE	W/PCB SLOTS & GUIDE EARS
		1 PLACE	± .010	± .010		EIK	1986/05/20	.100 GRID .025 SQ PIN
		ANGULAR ±1/2°				APPROVED BY	DATE	MOLEX INCORPORATED
		DRAFT WHERE APPLICABLE MUST REMAIN WITHIN DIMENSIONS				WAZ	1986/05/20	
		SEE TABLE				MATERIAL NO.	DOCUMENT NO.	SHEET NO.
		SEE TABLE				SDA-70204-0321-0384	SDA-70204-0321-0384	1 OF 1
		THIS DRAWING CONTAINS INFORMATION THAT IS PROPRIETARY TO MOLEX INCORPORATED AND SHOULD NOT BE USED WITHOUT WRITTEN PERMISSION						