

PLEASE CHECK WWW.MOLEX.COM FOR LATEST PART INFORMATION

Part Number: [1120340026](#)
Status: **Active**
Description: SST Remote DeviceNet Scanner, Ethernet remote connection, Din Rail mounting, IP30 with Cable Kit

Documents:

[Drawing \(PDF\)](#) [RoHS Certificate of Compliance \(PDF\)](#)

General

Product Family	Network Interface
Series	112034
Approvals	CE, ODVA
Communication Speed	N/A
IP Rating	IP20
MAC Address	00A091600422 (Ethernet)
Mounting Style	DIN Rail
Product Name	SST™
Protocol	DeviceNet*
Type	Remote Scanner

Physical

Channels	0
Interface	N/A
Network Connection Type	N/A
Packaging Type	Carton
Processor	N/A
Temperature Range - Operating	0°C to +50°C

Electrical

Current - Maximum Input	0.33A
EMC	IEC 61000-6-2
Supply Voltage	10-30V DC

Material Info

Old Part Number	SST-EDN-1-C2
-----------------	--------------

Reference - Drawing Numbers

Sales Drawing	E-112034-0026
---------------	---------------

EU RoHS
ELV and RoHS
Compliant
REACH SVHC
Not Reviewed
Halogen-Free
Status
Not Reviewed

China RoHS



Need more information on product environmental compliance?

Email productcompliance@molex.com
 For a multiple part number RoHS Certificate of Compliance, [click here](#)

Please visit the [Contact Us](#) section for any non-product compliance questions.

Search Parts in this Series
[112034Series](#)

PLEASE CHECK WWW.MOLEX.COM FOR LATEST PART INFORMATION



BradCommunications™ SST™ remote scanner uses the same great features of the SST DeviceNet PC interfaces, preserving your PC application investment while extending DeviceNet control over Ethernet.

Remote DeviceNet™ Scanner

DeviceNet control over Ethernet

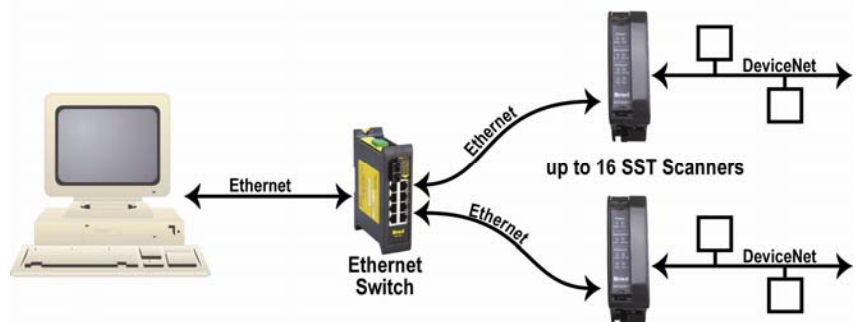
Features

- High performance DeviceNet protocol executed via up to 16 SST™ Remote DeviceNet™ Scanners
- User interface DLL/API is completely backward compatible with existing applications and local DeviceNet interface cards
- Diagnostic LEDs
- UCMM (Unconnected Message Manager) capable: Group 1, 2, and 3 dynamic explicit connections supported
- Provides simultaneous execution of Group 2 Client (Master) and Server (Slave) operation
- Supports all DeviceNet standard baud rates: 125, 250, and 500 Kbaud
- Supports Poll, Strobe, Change of State (COS) and Cyclic I/O messaging
- Provides Client (Master) explicit messaging to slave devices



Product Description

Traditionally when running a PC control application, one PC with one interface card installed was required for each DeviceNet™ network. Now with the introduction of the SST™ Remote DeviceNet Scanner, a PC for each network is no longer required.



The SST Remote DeviceNet Scanner controls I/O devices connected to a DeviceNet network without the need of a local PC. DIN rail mountable, up to 16 SST Remote DeviceNet Scanners can be connected to one Ethernet switch which is then connected back to a PC residing on an Ethernet network. The PC allows users to remotely access diagnostic information on the SST Remote DeviceNet Scanner and the DeviceNet network.

Benefits include:

- Backward compatible DLL preserves existing investment
- DIN rail mount allows distribution to machine level
- Frees up PC slots by placing scanner cards remotely
- Manage your DeviceNet application across an Ethernet LAN
- Capable of updating DeviceNet IO faster than a PCI version
- Reduce infrastructure costs by using cheaper Ethernet cable and fewer and/or less expensive PCs



Woodhead



BradCommunications™

Remote DeviceNet Scanner

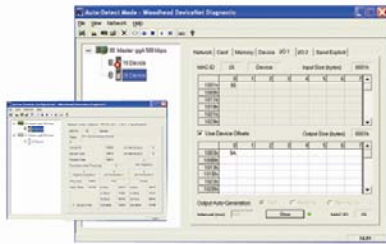


OS and Drivers Supported

- Microsoft Windows 2000 / XP drivers
- Diagnostic tools
- Example C source code and Windows 32-bit DLLs for custom driver development

Software Tools

Diagnostic and test tools are available that enable fast integration of industrial communication into your application.



Hardware Specifications

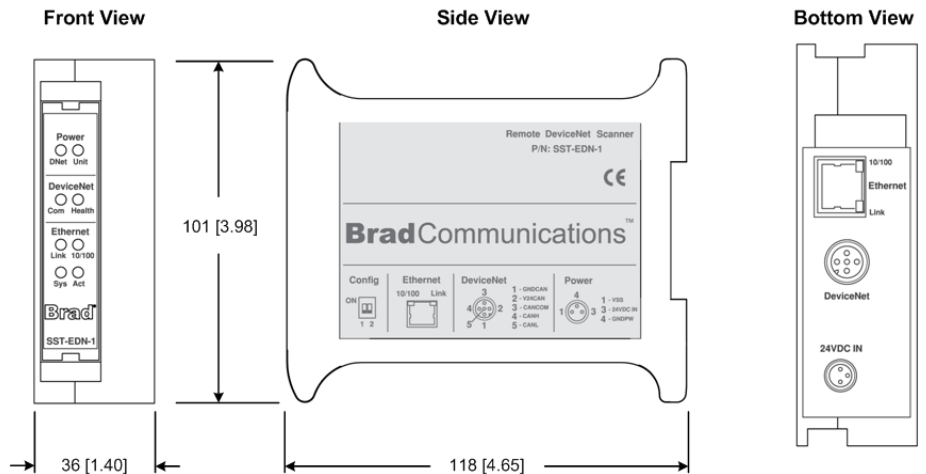
Diagnostic LEDs	Remote Scanner – Power, System Status DeviceNet – Power, Communication, Health Ethernet – Link, 10/100 Mbaud, Activity
Remote Scanner Power	10 – 30VDC, 330mA typical (male Nano-Change® M8 connector)
Operating Temperature	0° C (32° F) up to +50° C (122° F)
Storage Temperature	-40° C (-40° F) up to +85° C (185° F)
Humidity	5% to 95% non-condensing
RoHS Compliant	Yes
Approvals	CE
Network Specifications	
Protocol	DeviceNet master – Group 2 Client, Group 2 only Client DeviceNet slave – Group 2 Server Isolated CAN physical layer on each channel
Cable	DeviceNet: shielded twisted pair, compatible with target network Ethernet: Cat 5e shielded
Connector	DeviceNet: compliant male Micro-Change® M12 connector Ethernet: RJ45
DeviceNet Power	11-24 VDC, 50 mA typical
Isolation	500 V
Data Rate	125K, 250K and 500K baud for DeviceNet 10/100 Mbit for Ethernet

Ordering Information¹

SAP Material Number	Catalog Number	Product Description
1120340021	SST-EDN-1	SST™ Remote DeviceNet Scanner (without cables)
1120340026	SST-EDN-1-C2	SST Remote DeviceNet Scanner with cable kit (DeviceNet & Power) <ul style="list-style-type: none"> • single-ended power cable: 3-pole, M8 connector on one end, 2 meters (6.6ft), UL/CSA cable, Cat. No. 403000A10M020 • single-ended DeviceNet cable: 5-pole, M12 connector on one end, 2 meters (6.6ft), UL/CSA cable, Cat. No. DND30A-M020

¹ Remote DeviceNet Scanners can be ordered with cable kits (see above) or alternate cables can be ordered. For part numbering information, refer to our on-line catalog: www.woodhead.com/ecatalog

Dimensions: mm [inches]



To contact us: www.woodhead.com

Reference Number: DW2007201 Date Published: July 2008

North America: US: +1 800 225 7724 – Canada: +1 519 725 5136

Europe: France: +33 2 32 96 04 20 – Germany: +49 7252 94 96 0 – Italy: +39 010 59 30 77 – United Kingdom: +44 1495 356300

Asia: Shanghai, China: +86 21-5835-9885 - Tianjin, China: +86 22-23321717

Singapore: +65 6268-6868 – Yamato, Japan: +81 46-265-2428 – Nagoya, Japan: +81 52-221-5950

Brad, Micro-Change and Nano-Change are registered trademarks and BradCommunications and SST are trademarks of Molex Incorporated. © 2008 Molex