

IEC Appliance Inlet C8 with Line Switch 1-pole



CMF1

C8



70° C

**Description**

- Panel Mount:
Screw-on mounting on PCB, from top or bottom
- 2 Functions:
Appliance Inlet Protection class II, Line Switch 1-pole
- For PCB mounting
- Alternative: polarized version or protection class I [CMF2](#), [CMF5](#); [CMF3](#), [CMF6](#)

Characteristics

- Easy mounting with center bolt and snapper or screwed on PCB or housing
- Electrical connection done on the PCB
- Bi-positioning of the switch from left or right side, Standard CMF with switch on right side
- With or without rear-side insulation cover
- Qualified for use in equipment according IEC/EN 60950

Other versions on request

- Line switch with other rocker marking
- Line switch on left of inlet

References

[General Product Information](#)

Weblinks

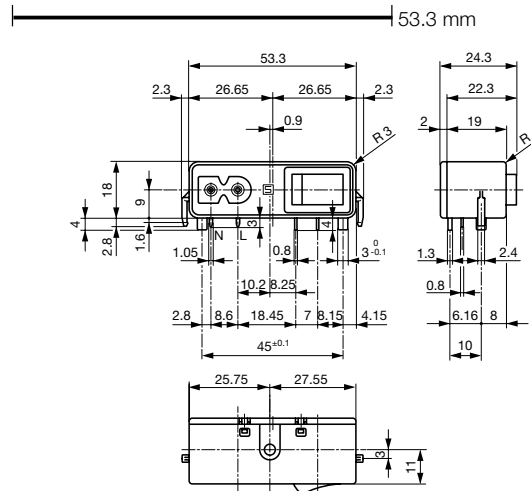
[Approvals](#), [RoHS](#), [CHINA-RoHS](#), [Mating Connectors](#), [e-Store](#), [Distributor-Stock-Check](#), [Accessories](#)

Technical Data

| | |
|---------------------------|---|
| Ratings IEC | 2.5A / 250VAC; 50Hz |
| Ratings UL/CSA | 6A / 125VAC; 60Hz |
| Dielectric Strength | > 2.3kVAC between L-N > 2.8kVAC between L/N-PE (1 min/50Hz) |
| Allowable Operation Temp. | -25°C to 70°C |
| Degree of Protection | from front side IP 40 acc. to IEC 60529 |
| Protection Class | Suitable for appliances with protection class 2 acc. to IEC 61140 |
| Terminal | PCB 1.6 mm |
| Material: Housing | Thermoplastic, black, UL 94V-0 |

| | |
|-----------------|---|
| Appliance Inlet | C8 acc. to IEC/EN 60320-1, UL 498, CSA C22.2 no. 42 (for cold conditions) pin-temperature 70 °C, 2.5A, Protection Class 2 |
| Line Switch | Rocker switch 1-pole, non-illuminated, acc. to IEC 61058-1 Technical details |

Dimensions

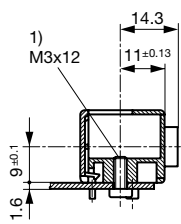


with insulation cover

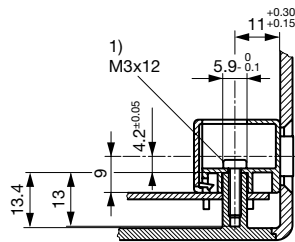
The size of the mounting cut-out can be selected as required.

Fixation on PCB or housing from below

Fixation on PCB or housing from above



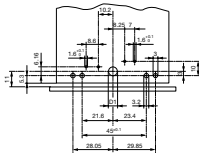
1) self tapping screw



1) self tapping screw

Drilling diagrams

CMF1 and CMF2 (C8)



Variants

Standard CMF with switch on right side

| Connectors | Mounting side | Cover | Ground terminal | Ground terminal direction | Order Number |
|------------|---------------|-------|-----------------|---------------------------|--------------|
| C8 | from below | | - | - | CMF1.1031.12 |
| C8 | from below | ● | - | - | CMF1.1131.12 |
| C8 | from top | | - | - | CMF1.1011.12 |
| C8 | from top | ● | - | - | CMF1.1111.12 |

Packaging unit 50 Pcs

Mating Outlets/Connectors

Category / Description

[Power Cord Overview complete](#)

| | |
|---|------|
| Power Cord with IEC Connector C7, Straight 70°C | 2510 |
| Power Cord with IEC Connector C7, Angled | 2511 |
| Power Cord with IEC Plug C7, Angled | 2514 |
| Power Cord with IEC Connector C7, Straight 70°C | 4810 |

[Power Cord further types to CMF1, CMF4](#)