

IEC Appliance Inlet C14 with Filter, Line Switch 2-pole

Standard- or Medical-Filter



C20



70° C



Description

- Panel Mount:
Screw-on mounting from front side
- 3 Functions:
Appliance Inlet Protection class I, Line Switch 2-pole, Line filter in standard and medical version
- Quick connect terminals 6,3 x 0,8 mm
- Alternative: version without line filter [EC11](#)

Approvals

- VDE License Number: 40001522
- UL License Number: E72928

Characteristics

- All single elements are already wired
- Line switch non-illuminated
Illuminated version on request
- With EMC-shield
- Ideal for application with high transient loads
- Qualified for use in equipment according IEC/EN 60950

Other versions on request

- Line switch, illuminated
- Line switch with other rocker marking

References

[General Product Information](#)

Weblinks

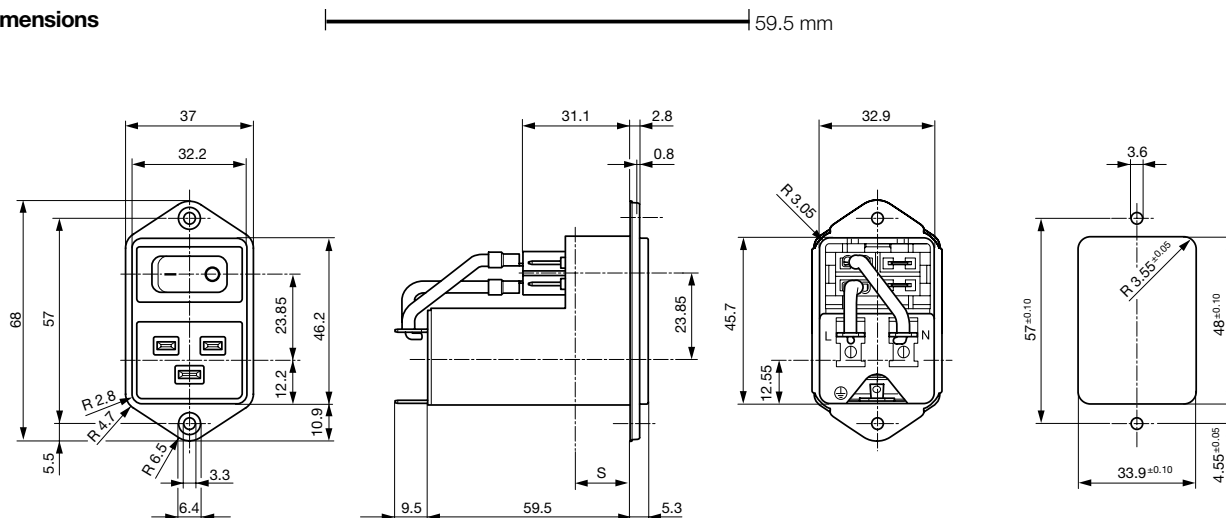
[Approvals](#), [RoHS](#), [CHINA-RoHS](#), [Mating Connectors](#), [e-Store](#), [Distributor-Stock-Check](#), [Accessories](#)

Technical Data

| | |
|---------------------------|---|
| Ratings IEC | 12 - 16A @ Ta 40 °C / 250VAC; 50Hz |
| Ratings UL/CSA | 12 - 20A @ Ta 40 °C / 125VAC; 60Hz |
| Leakage Current | standard < 0.5mA (250V / 60Hz) medical < 5 µA (250 V / 60 Hz) |
| Dielectric Strength | > 1.7 kVDC between L-N > 2.7 kVDC between L/N-PE Test voltage (2 sec) |
| Allowable Operation Temp. | -25 °C to 85 °C |
| Climatic Category | 25/085/21 acc. to IEC 60068-1 |
| Degree of Protection | from front side IP 40 acc. to IEC 60529 |
| Protection Class | Suitable for appliances with protection class 1 acc. to IEC 61140 |
| Terminal | Quick connect terminals 6.3 x 0.8 mm |
| Panel Thickness s | Screw: max 8 mm Mounting screw torque max 0.5Nm |
| Material: Housing | Thermoplastic, black, UL 94V-0 |

| | |
|-------------------------|---|
| Appliance-Inlet/-Outlet | C20 acc. to IEC/EN 60320-1, UL 498, CSA C22.2 no. 42 (for cold conditions) pin-temperature 70 °C, 16A, Protection Class 1 |
| Line Switch | Rocker switch 2-pole, non-illuminated, acc. to IEC 61058-1 Technical details |
| Line Filter | Standard and Medical Version, IEC 60939, IEC 60601-1, UL 1283, UL 544, EN 133 200, CSA C22.2 no. 8 Technical details |
| MTBF | > 1'700'000h acc. to MIL-HB-217 F |

Dimensions



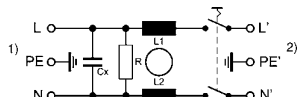
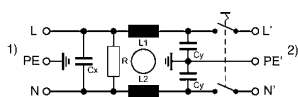
Technical Data of Filter-Components

| Rated Current [A] | Filter-Type | Internally wired | Inductances L [mH] | Capacitance CX [nF] | Capacitance CY [nF] | R [MΩ] |
|-------------------|----------------------|------------------|--------------------|---------------------|---------------------|--------|
| 12 | Standard Version | prewired | 2 x 0.8 | 100 | 2.2 | 1 |
| 16 | Standard Version | prewired | 2 x 0.6 | 100 | 2.2 | 1 |
| 20 | Standard Version | prewired | 2 x 0.3 | 100 | 2.2 | 1 |
| 12 | Medical Version (M5) | prewired | 2 x 0.8 | 100 | - | 1 |
| 16 | Medical Version (M5) | prewired | 2 x 0.6 | 100 | - | 1 |
| 20 | Medical Version (M5) | prewired | 2 x 0.3 | 100 | - | 1 |

Diagrams

Standard version

Medical version (M5)



1) Line
2) Load

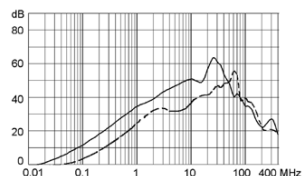
1) Line
2) Load

Attenuation Loss

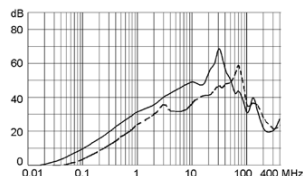
--- differential mode ____ common mode

Standard version

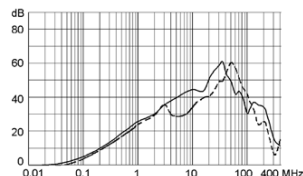
12 A



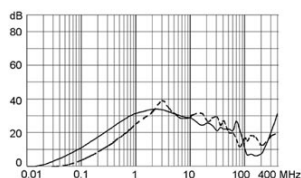
16 A



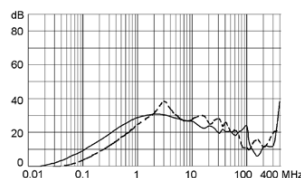
20 A



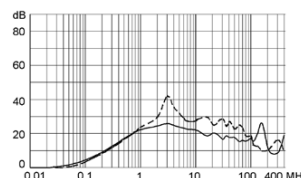
Medical version (M5)
12 A



16 A



20 A



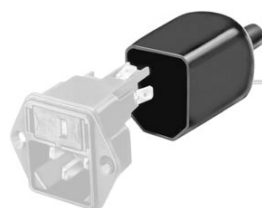
Variants

| Rated Current [A] | Filter-Type | Internally wired | Line Switch | Order Number |
|-------------------|----------------------|------------------|-------------|---------------|
| 12 | Standard Version | | 2-pole | EC12.3101.001 |
| 16 | Standard Version | | 2-pole | EC12.2101.001 |
| 20 | Standard Version | | 2-pole | EC12.1101.001 |
| 12 | Standard Version | | 2-pole | EC12.3101.002 |
| 16 | Standard Version | | 2-pole | EC12.2101.002 |
| 20 | Standard Version | | 2-pole | EC12.1101.002 |
| 12 | Medical Version (M5) | | 2-pole | EC12.3201.001 |
| 16 | Medical Version (M5) | | 2-pole | EC12.2201.001 |
| 20 | Medical Version (M5) | | 2-pole | EC12.1201.001 |
| 12 | Medical Version (M5) | | 2-pole | EC12.3201.002 |
| 16 | Medical Version (M5) | | 2-pole | EC12.2201.002 |
| 20 | Medical Version (M5) | | 2-pole | EC12.1201.002 |

Packaging unit 20 Pcs

Accessories

Description



Assorted Covers
Rear Cover

0859.0076

0859.0108



Cord retaining kits
Cord retaining strain relief

Flat head, Z

0888.0021

Flat head, H

4700.0008

Mating Outlets/Connectors

Category / Description

[Connector Overview complete](#)



IEC Connector C19, Rewireable, Straight

0104

IEC Connector C19, Rewireable, Angled

1651

IEC Connector C19, Rewireable, Straight

1652

IEC Connector C19, Rewireable, Angled

4790

IEC Connector C19, Rewireable, Straight

4795

[Connector further types to EC12](#)



[Power Cord Overview complete](#)

[Power Cord with IEC Connector C19, Straight](#)

1654

[Power Cord further types to EC12](#)

[Power Supply or Interconnection Cord Overview complete](#)

[Divers Power Supply and Interconnection Cords 16 A](#)

Kabelverbindung/16 A

[Power Supply or Interconnection Cord further types to EC12](#)