

**PLEASE CHECK WWW.MOLEX.COM FOR LATEST PART INFORMATION**

**Part Number:** [0191640053](#)  
**Status:** **Active**  
**Description:** Perma-Seal™ Snap Plug Receptacle for 18-22 AWG Wire, Diameter 4.57mm (.180")

**Documents:**

[Drawing \(PDF\)](#) [RoHS Certificate of Compliance \(PDF\)](#)

**General**

|                         |                   |
|-------------------------|-------------------|
| Product Family          | Quick Disconnects |
| Series                  | 19164             |
| Crimp Quality Equipment | Yes               |
| Product Name            | Perma-Seal™       |
| Type                    | Snap Receptacle   |

**Physical**

|                                |                      |
|--------------------------------|----------------------|
| Barrel Type                    | Closed               |
| Color - Resin                  | Natural              |
| Flammability                   | 94V-0                |
| Gender                         | Female               |
| Glow-Wire Compliant            | No                   |
| Insulation                     | NiAc™                |
| Lock to Mating Part            | None                 |
| Material - Metal               | Brass                |
| Material - Plating Mating      | Tin                  |
| Material - Plating Termination | Tin                  |
| Material - Resin               | Nylon                |
| Orientation                    | Straight             |
| Packaging Type                 | Bag                  |
| Plating min: Mating (µin)      | 100                  |
| Plating min: Mating (µm)       | 2.5                  |
| Plating min: Termination (µin) | 100                  |
| Plating min: Termination (µm)  | 2.5                  |
| Tab Thickness                  | N/A                  |
| Tab Width                      | N/A                  |
| Temperature Range - Operating  | -55°C to +125°C      |
| Termination Interface: Style   | Crimp or Compression |
| Wire Insulation Diameter       | 3.30mm (.130") max.  |
| Wire Size AWG                  | 18, 20, 22           |
| Wire Size mm²                  | 0.25 - 1.50          |

**Electrical**

|                   |         |
|-------------------|---------|
| CSA               | LR18689 |
| Voltage - Maximum | 600V    |

**Material Info**

|                 |            |
|-----------------|------------|
| Old Part Number | SBRA-8180N |
|-----------------|------------|

**Reference - Drawing Numbers**

|               |              |
|---------------|--------------|
| Sales Drawing | SD-19164-035 |
|---------------|--------------|



image - Reference only

Series

**EU RoHS**

**ELV and RoHS Compliant**

**REACH SVHC**

Not Reviewed

**Halogen-Free**

Status

**Not Reviewed**

**Need more information on product environmental compliance?**

Email [productcompliance@molex.com](mailto:productcompliance@molex.com)  
 For a multiple part number RoHS Certificate of Compliance, [click here](#)

Please visit the [Contact Us](#) section for any non-product compliance questions.

**China RoHS**



**Search Parts in this Series**

19164Series

**Application Tooling | FAQ**

*Tooling specifications and manuals are found by selecting the products below. Crimp Height Specifications are then contained in the Application Tooling Specification document.*

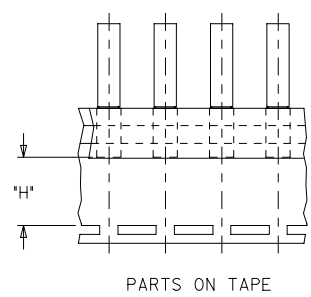
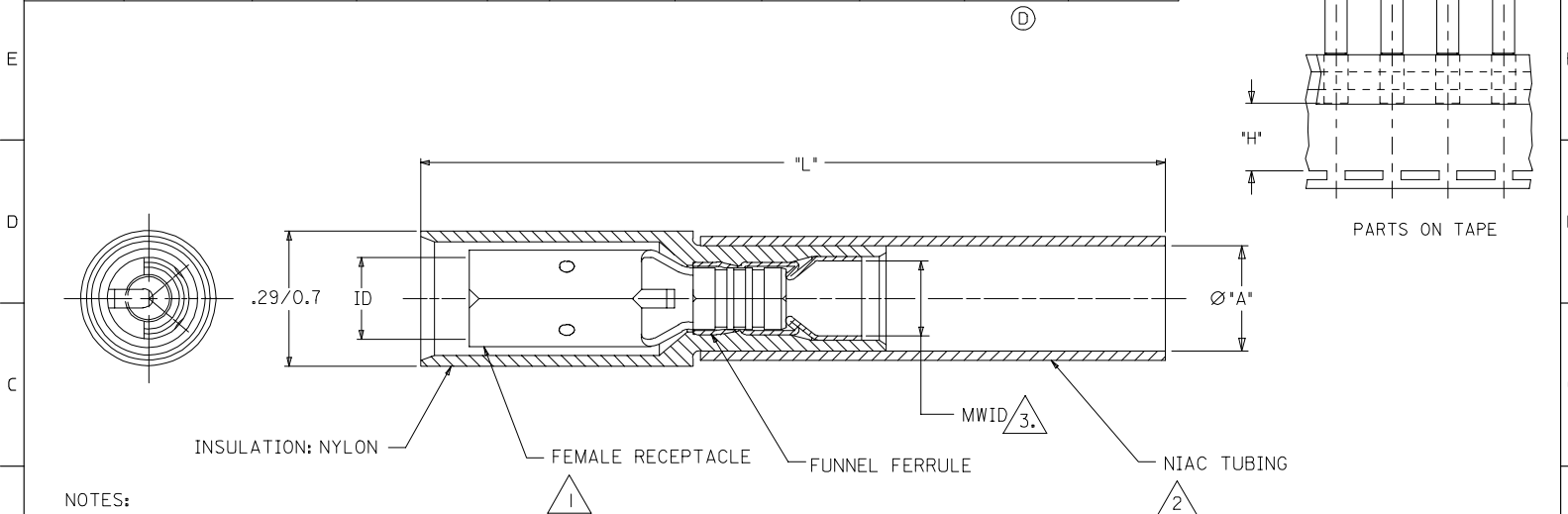
**Global**

| Description                                    | Product #                  |
|--|----------------------------|
| Hand Crimp Tool                                | <a href="#">0640014700</a> |
| Crimp Head for the AT-200™ Pneumatic Hand Tool | <a href="#">0640054700</a> |

**PLEASE CHECK WWW.MOLEX.COM FOR LATEST PART INFORMATION**

19164

| MATERIAL NUMBER | ENGINEERING NUMBER | MATERIAL NUMBER ON TAPE | ENGINEERING NUMBER ON TAPE | AWG   | COLOR CODE | MWID     | "ID" MIN  | "L" MAX   | "A" MIN   | H ±.01/.3 |
|-----------------|--------------------|-------------------------|----------------------------|-------|------------|----------|-----------|-----------|-----------|-----------|
| I91640052       | SBRA-8156N         | N/A                     | N/A                        | 22-18 | RED        | .13/3.3  | .156/3.96 | 1.58/40.1 | .235/5.97 | N/A       |
| I91640053       | SBRA-8180N         | N/A                     | N/A                        | 22-18 | RED        | .13/3.3  | .180/4.57 | 1.60/40.6 | .235/5.97 | N/A       |
| I91640054       | SBRB-8156N         | I91640414               | SBRB-8156NT                | 16-14 | BLUE       | .15/3.81 | .156/3.96 | 1.60/40.6 | .230/5.84 | .39/9.9   |
| I91640055       | SBRB-8180N         | N/A                     | N/A                        | 16-14 | BLUE       | .15/3.81 | .180/4.57 | 1.60/40.6 | .230/5.84 | N/A       |



- NOTES:
- 1. TERMINAL MATERIAL: COPPER PLATING: TIN
  - 2. INSULATION MATERIAL: HEAT SHRINKABLE NIAC TUBING W/ HOT-MELT ADHESIVE INNER LINER
  - 3. MWID= MAXIMUM WIRE INSULATION DIAMETER

| CHANGED "A" DIM<br>EC NO: ETC2006-0154<br>DRAWN: ASAYDEH 2005/12/21<br>CHECK: JLOMASTR0005/12/21<br>APPR: JPAWLICK 2005/12/21 | QUALITY SYMBOLS                                  | GENERAL TOLERANCES (UNLESS SPECIFIED)   | SCALE 1:1 | DESIGN UNITS INCH | THIRD ANGLE PROJECTION | REVISE ON CAD ONLY |        |         |          |        |         |          |       |        |         |       |        |  |  |  |  |
|---|--|---|-----------|-------------------|------------------------|--------------------|--------|---------|----------|--------|---------|----------|-------|--------|---------|-------|--------|--|--|--|--|
|   | DESCRIPTION<br>0<br>0                            | <table border="1"> <tr> <th></th> <th>mm</th> <th>INCH</th> </tr> <tr> <td>4 PLACES</td> <td>± .005</td> <td>± .0005</td> </tr> <tr> <td>3 PLACES</td> <td>± .005</td> <td>± .0005</td> </tr> <tr> <td>2 PLACES</td> <td>± .01</td> <td>± .001</td> </tr> <tr> <td>1 PLACE</td> <td>± .02</td> <td>± .002</td> </tr> </table> |           | mm                | INCH                   | 4 PLACES           | ± .005 | ± .0005 | 3 PLACES | ± .005 | ± .0005 | 2 PLACES | ± .01 | ± .001 | 1 PLACE | ± .02 | ± .002 | DIMENSION STYLE IN/MM<br>DRAWN BY BENDERLE 2004/09/08<br>CHECKED BY R DEROSS 2004/09/08<br>APPROVED BY R DEROSS 2004/09/08 | TITLE FULLY INSULATED AVIKRIMP PERMA-SEAL BULLET RECEPT .156/3.96-.180/4.57 DIA.<br>MOLEX INCORPORATED |  |  |
|   |  |   | mm        | INCH              |                        |                    |        |         |          |        |         |          |       |        |         |       |        |  |  |  |  |
|   |  | 4 PLACES  | ± .005    | ± .0005           |                        |                    |        |         |          |        |         |          |       |        |         |       |        |  |  |  |  |
| 3 PLACES  | ± .005   | ± .0005   |           |                   |                        |                    |        |         |          |        |         |          |       |        |         |       |        |  |  |  |  |
| 2 PLACES  | ± .01  | ± .001  |           |                   |                        |                    |        |         |          |        |         |          |       |        |         |       |        |  |  |  |  |
| 1 PLACE   | ± .02  | ± .002  |           |                   |                        |                    |        |         |          |        |         |          |       |        |         |       |        |  |  |  |  |
| DRAFT WHERE APPLICABLE MUST REMAIN WITHIN DIMENSIONS  | MATERIAL NO. SD-19164-035<br>DOCUMENT NO. 1 OF 1 | THIS DRAWING CONTAINS INFORMATION THAT IS PROPRIETARY TO MOLEX INCORPORATED AND SHOULD NOT BE USED WITHOUT WRITTEN PERMISSION   |           |                   |                        |                    |        |         |          |        |         |          |       |        |         |       |        |  |  |  |  |

tb\_frame B rev. B1 2000/08/01